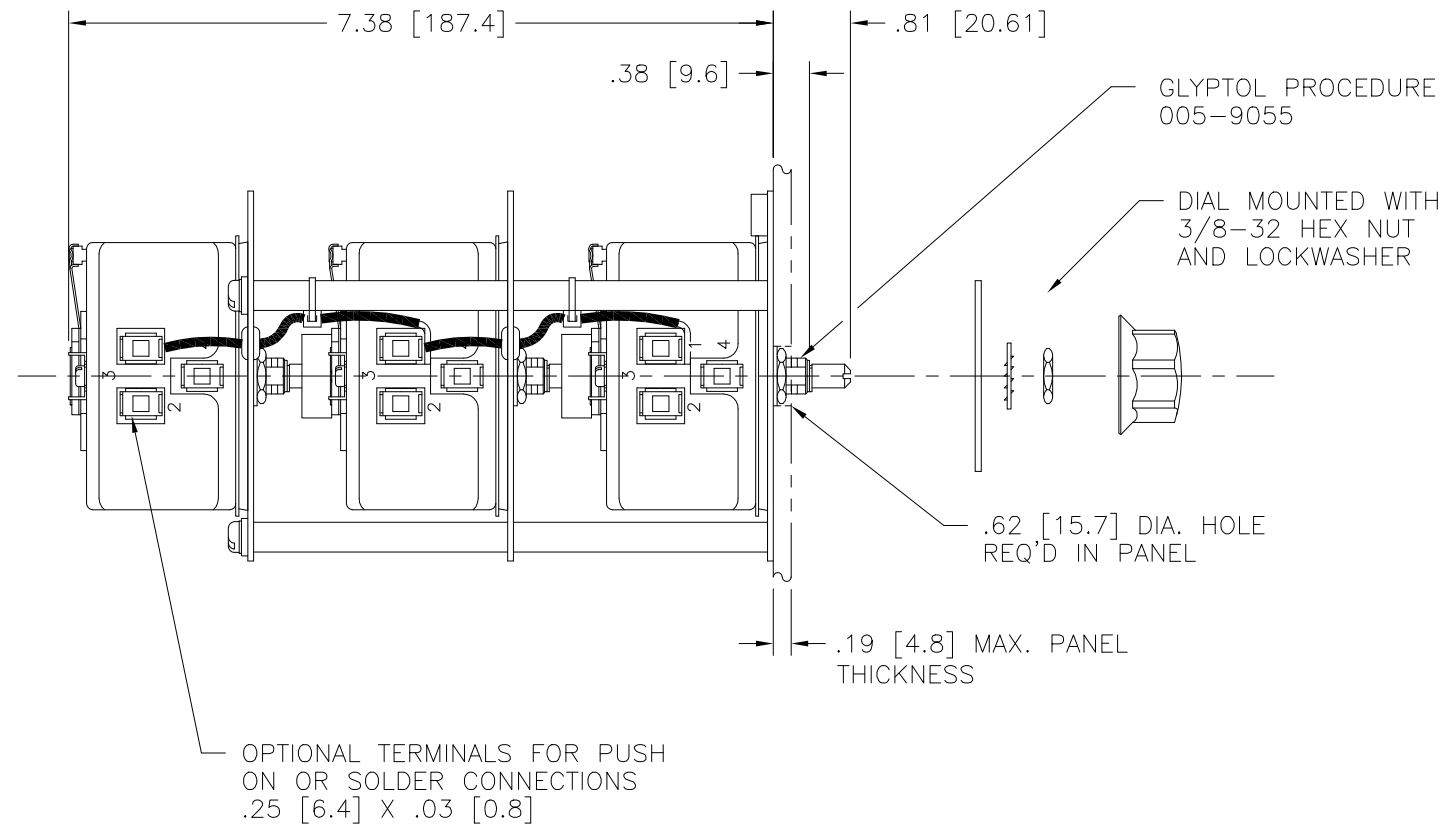


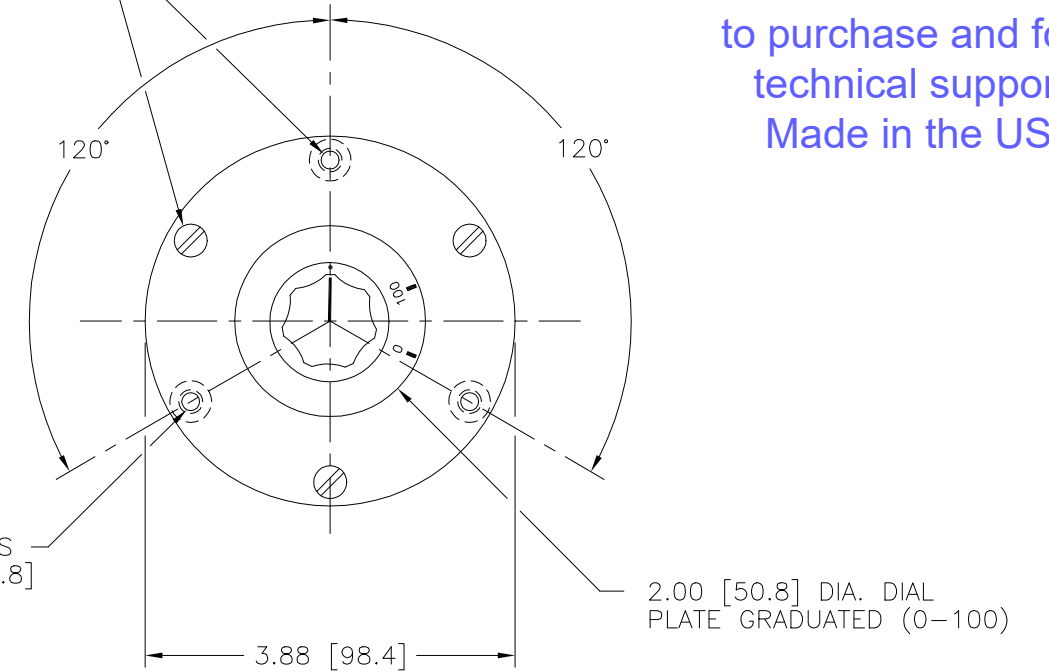
| | | | |
|-----------|----------|----------|-------------------|
| DWG. NO. | 031-0125 | | |
| REVISIONS | | | |
| SYM. | E.C.N. | DATE | APVD. |
| A | 23648 | 12/31/97 | REVISED & REDRAWN |

Go to VARIAC.com
to purchase and for
technical support.
Made in the USA



TO BE FLUSH OR BELOW FLUSH WITH BOTTOM MOUNTING PLATE

1/4-20 UNC-2B (3) HOLES 120° APART ON A 3.38 [85.8] DIA. BOLT CIRCLE

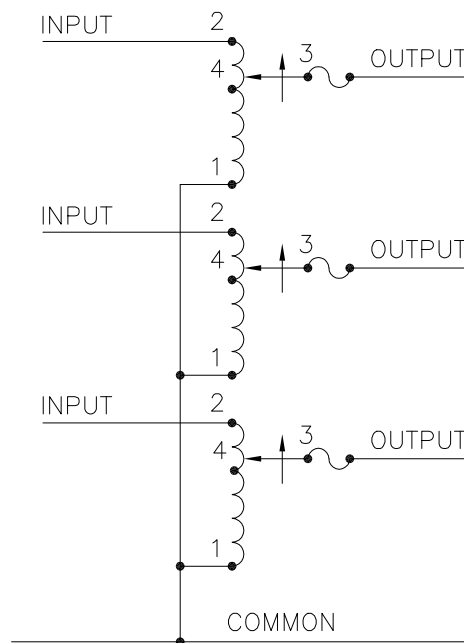


NOTES:

1. MAXIMUM AMBIENT TEMPERATURE 50°C
2. VENTILATION MUST BE PROVIDED WHEN USED IN AN ENCLOSURE.

SPECIFICATIONS:

- ++ LINE TO LINE VOLTAGE
- ⌘ IF GANGED UNITS ARE USED IN A SYSTEM THAT ORDINARILY HAS A COMMON NEUTRAL OR GROUND BETWEEN SOURCE AND LOAD, THE NEUTRAL OR GROUND MUST BE CONNECTED TO THE COMMON TERMINALS OF THE VARIABLE TRANSFORMER ASSEMBLY. IF THE SYSTEM HAS NO NEUTRAL, THE LOAD MUST BE BALANCED OR THE TRANSFORMERS WILL BE DAMAGED.
- JUMPER PROVIDED IN THE STANDARD COMMON POSITION AND SHOULD BE MOVED OR REMOVED AS REQUIRED.



SCHMATIC
FUSE RECOMMENDED BUT NOT SUPPLIED

| SPECIFICATIONS | | | | | | | | | | | |
|-------------------|-------|-------|--------|-----------------------|----------|-------------------------|------------------------------------|------------------------------------------------|-------|----------|--------|
| WIRING | INPUT | | OUTPUT | | | | SHAFT ROTATION TO INCREASE VOLTAGE | TERMINAL CONNECTIONS | | | |
| | VOLTS | HERTZ | VOLTS | CONSTANT CURRENT LOAD | | CONSTANT IMPEDANCE LOAD | | FOR INCREASING VOLTAGE AS VIEWED FROM BASE END | | | |
| | | | | MAX. AMPS | MAX. KVA | MAX. AMPS | | MAX. KVA | INPUT | JUMPER ■ | OUTPUT |
| THREE PHASE WYE ⌘ | 240 | 60 | 0-240 | 1.75 | 0.73 | 2.2 | 0.92 | CW | 2-2-2 | 1-1-1 | 3-3-3 |
| | ++ | | | | | | | CCW | 1-1-1 | 2-2-2 | 3-3-3 |

| | | | | | | | | | |
|---------------------------------------------------------------------------------------------------------------------------------------------------------------------------------------------------------------------------------------------------------------------------------------------------------------------------------------------------------------------------------------|-------|--------|--------|---------|----------------------------------------|--|--|--|--|
| UNLESS OTHERWISE SPECIFIED, TOLERANCE IS # | | | | | TITLE: SPEC. CONTROL DRAWING | | | | |
| DECIMALS | HOLES | ANGLES | DRAFT | UNITS | VARIABLE TRANSFORMER | | | | |
| .XX | .000 | 1° | 1-1/2° | IN [mm] | TYPE: 171-3 | | | | |
| MATERIAL: | | | | | DRAWN BY: TIM RAU | | | | |
| ALL DIMENSIONS APPLY AFTER PLATING | | | | | DATE: 12/29/97 | | | | |
| The information and design disclosed herein was originated by and is the property of STACO ENERGY PRODUCTS CO., which reserves all patent, proprietary, design, manufacturing, reproduction, use and sale rights thereto, and to any article disclosed therein except to the extent rights are expressly granted to others. The foregoing does not apply to vendor proprietary parts. | | | | | FIRST USED ON: DO NOT SCALE DWG. | | | | |
| | | | | | CHECKER: DATE: WEIGHT APPROX. 6.5 LBS. | | | | |
| | | | | | ENGINEER: DATE: SCALE 1=1 SHEET 1 OF 1 | | | | |
| | | | | | CUSTOMER APPROVAL: DATE: | | | | |
| | | | | | DWG. NO. 031-0125 | | | | |

