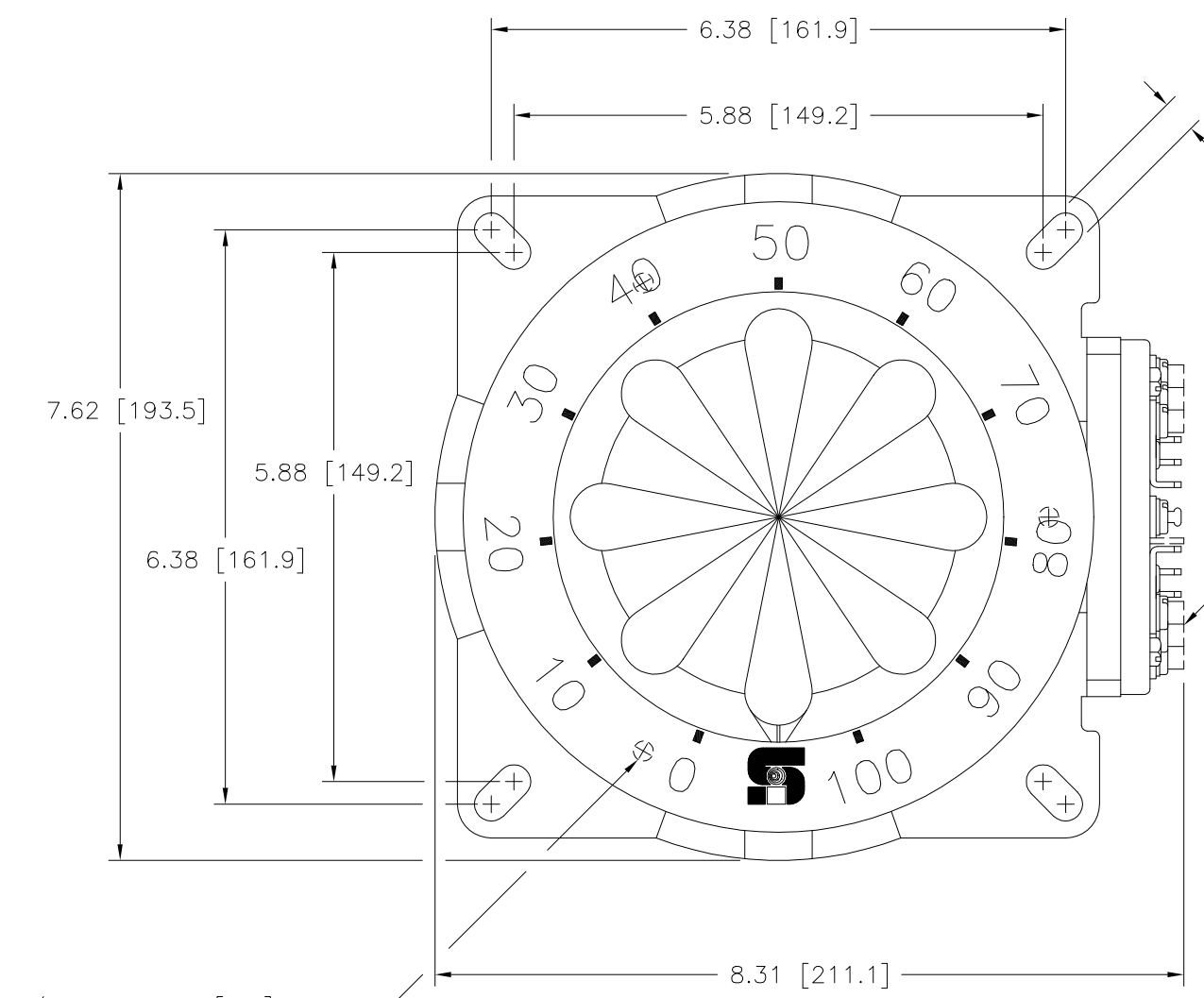


Go to VARIAC.com
to purchase and for
technical support.
Made in the USA



(4) SLOTS FOR .38 [9.6] DIA. MOUNTING HARDWARE

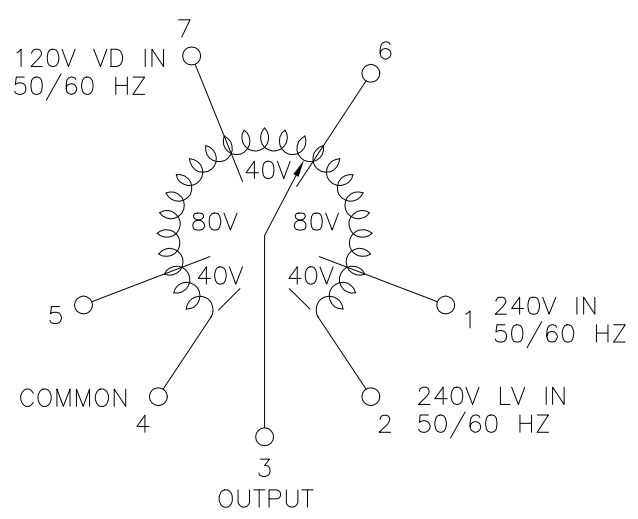
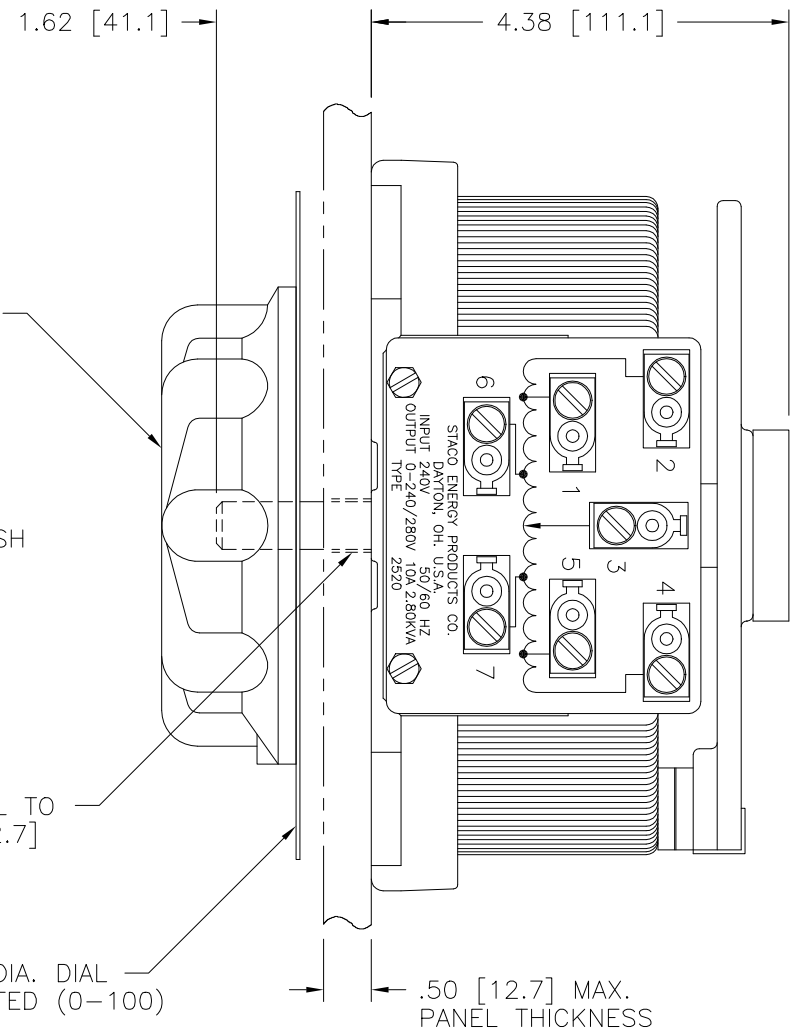
1/4-28 X .38 [9.6] DEEP
(3) HOLES 120° APART
ON A 6.00 [152.4] DIA.
BOLT CIRCLE

5.00 [127.0] DIA. KNOB

OPTIONAL TERMINALS FOR PUSH ON OR SOLDER CONNECTIONS (.032 X .250) [0.8 X 6.4]

HOLE IN PANEL TO CLEAR .50 [12.7] DIA. SHAFT

7.00 [177.8] DIA. DIAL PLATE GRADUATED (0-100)



SCHEMATIC

AS VIEWED FROM BASE END
FUSE RECOMENDED BUT NOT SUPPLIED

SPECIFICATIONS											
WIRING	INPUT		OUTPUT				SHAFT ROTATION TO INCREASE VOLTAGE	TERMINAL CONNECTIONS			
	VOLTS	HERTZ	VOLTS	CONSTANT CURRENT LOAD		CONSTANT IMPEDANCE LOAD		FOR INCREASING VOLTAGE AS VIEWED FROM BASE END			
				MAX. AMPS	MAX. KVA	MAX. AMPS		MAX. KVA	INPUT	JUMPER	OUTPUT
SINGLE PHASE	240	50/60	0-240	10	2.40	13	3.12	CW	2-4	---	4-3
			0-280	10	2.80	---	---	CCW	2-4	---	2-3
	120	50/60	0-280	10	1.20	---	---	CW	1-4	---	4-3
								CCW	2-5	---	2-3
							CCW	7-4	---	4-3	
								CCW	6-2	---	2-3

UNLESS OTHERWISE SPECIFIED, TOLERANCE IS #				UNITS		TITLE: SPEC. CONTROL DRAWING				
DECIMALS	HOLES	ANGLES	DRAFT	IN [mm]		VARIABLE TRANSFORMER				
.XX	±.01	.002	1°	1-1/2"		TYPE: 2520				
MATERIAL:				ALL DIMENSIONS APPLY AFTER PLATING		DRAWN BY: K. TOLLIVER				
						DATE: 2/10/92				
						FIRST USED ON: 2520				
						DO NOT SCALE DWG.				
						CUSTOMER APPROVAL: _____ DATE: _____				
						CHECKER: _____ DATE: _____				
						WEIGHT APPROX. 21 LBS.				
						CODE IDENT. NO. 83008				
						SCALE 1=1				
						SHEET 1 OF 1				
						DWG. NO. 031-5401				

