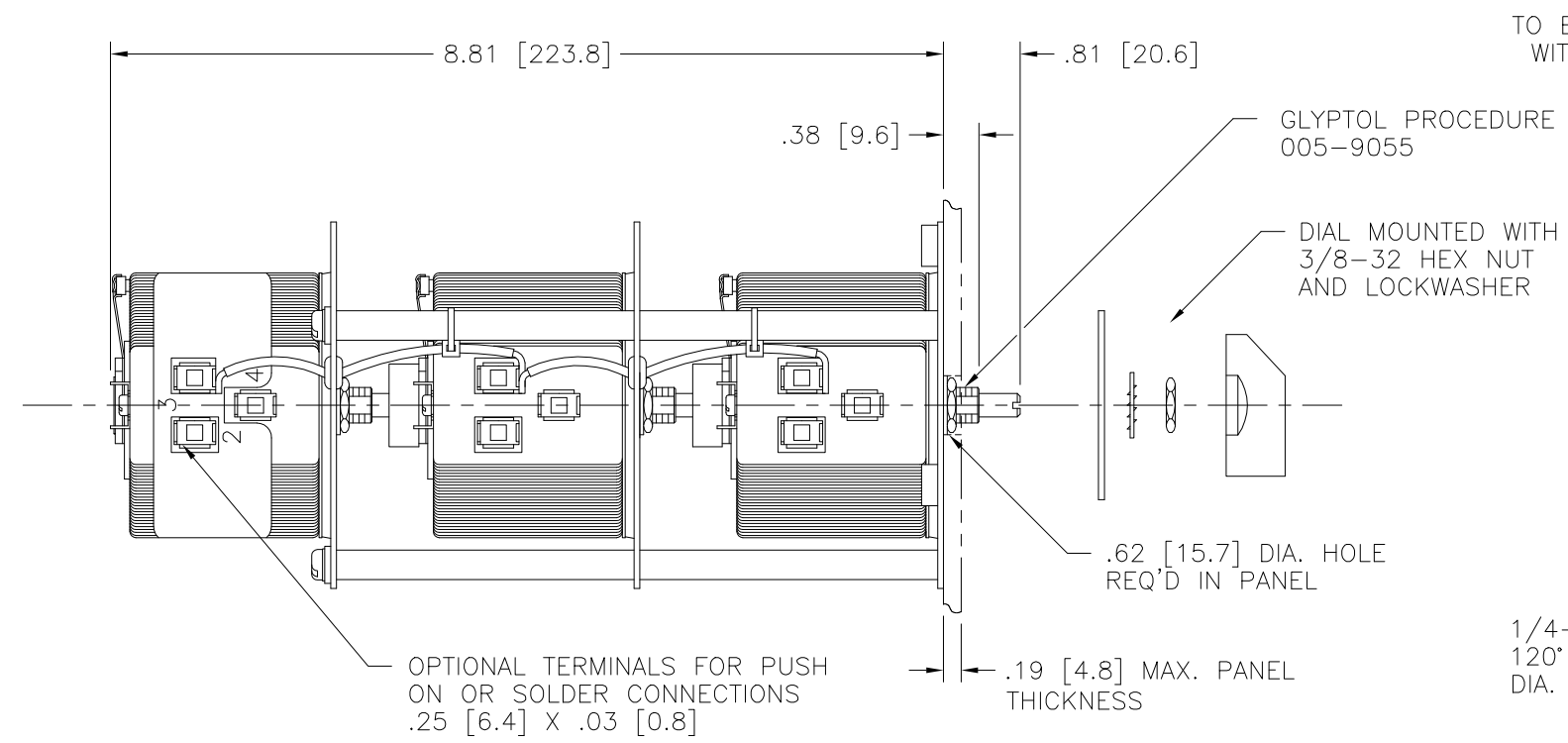
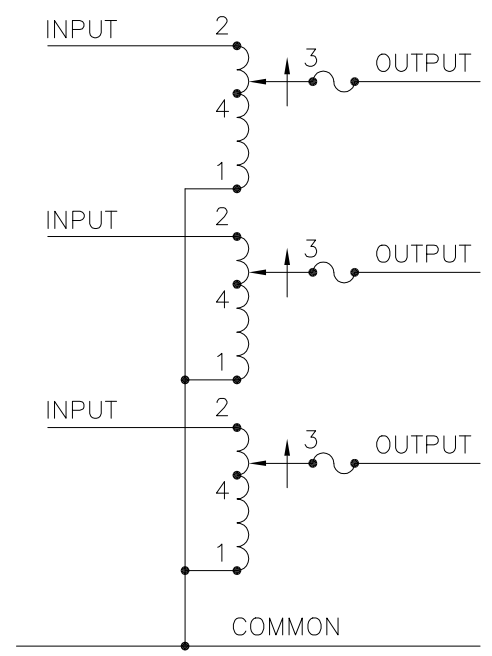
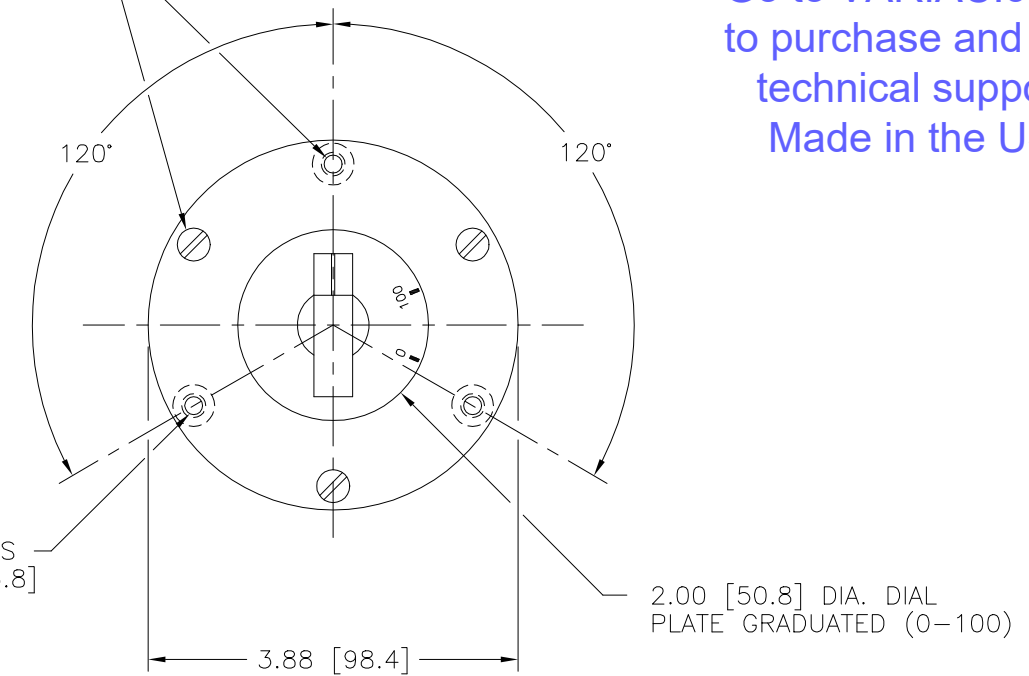


Go to [VARIAC.com](http://VARIAC.com)  
to purchase and for  
technical support.  
Made in the USA



TO BE FLUSH OR BELOW FLUSH WITH BOTTOM MOUNTING PLATE

1/4-20 UNC-2B (3) HOLES 120° APART ON A 3.38 [85.8] DIA. BOLT CIRCLE



SCHEMATIC  
FUSE RECOMMENDED BUT NOT SUPPLIED

77 IF GANGED UNITS ARE USED IN A SYSTEM THAT ORDINARILY HAS A COMMON NEUTRAL OR GROUND BETWEEN SOURCE AND LOAD, THE NEUTRAL OR GROUND MUST BE CONNECTED TO THE COMMON TERMINALS OF THE VARIABLE TRANSFORMER ASSEMBLY. IF THE SYSTEM HAS NO NEUTRAL, THE LOAD MUST BE BALANCED OR THE TRANSFORMERS WILL BE DAMAGED.

■ JUMPERS PROVIDED IN THE STANDARD COMMON POSITION AND SHOULD BE MOVED OR REMOVED AS REQUIRED.

++ LINE TO LINE VOLTAGE.

SPECIFICATIONS											
WIRING	INPUT		OUTPUT				SHAFT ROTATION TO INCREASE VOLTAGE	TERMINAL CONNECTIONS			
	VOLTS	HERTZ	VOLTS	CONSTANT CURRENT LOAD		CONSTANT IMPEDANCE LOAD		FOR INCREASING VOLTAGE AS VIEWED FROM BASE END			
				MAX. AMPS	MAX. KVA	MAX. AMPS		MAX. KVA	INPUT	JUMPER ■	OUTPUT
THREE PHASE WYE 77	240	60	0-240	3.0	1.25	3.5	1.45	CW	1-2	1-1-1	3-3-3
	++							CCW	1-2	2-2-2	3-3-3

UNLESS OTHERWISE SPECIFIED, TOLERANCE IS #				UNITS		TITLE: SPEC. CONTROL DRAWING						
DECIMALS	HOLES	ANGLES	DRAFT	IN [mm]		VARIABLE TRANSFORMER						
.XX	.04	1°	1-1/2°			TYPE: 291-3						
.XXX	.005					STACO ENERGY PRODUCTS CO. DAYTON, OHIO U.S.A.						
MATERIAL:				ALL DIMENSIONS APPLY AFTER PLATING		DRAWN BY		DATE	FIRST USED ON	DO NOT SCALE DWG.	CUSTOMER APPROVAL	DATE
The information and design disclosed herein was originated by and is the property of STACO ENERGY PRODUCTS CO., which reserves all patent, proprietary, design, manufacturing, reproduction, use and sale rights thereto, and to any article disclosed therein except to the extent rights are expressly granted to others. The foregoing does not apply to vendor proprietary parts.						K. TOLLIVER		1/02/92				
						CHECKER		DATE	WEIGHT APPROX. 8.25 LBS.	CODE IDENT. NO. 83008	DWG. NO.	DWG. NO.
						ENGINEER		DATE	SCALE 1=1	SHEET 1 OF 1	D	031-0293