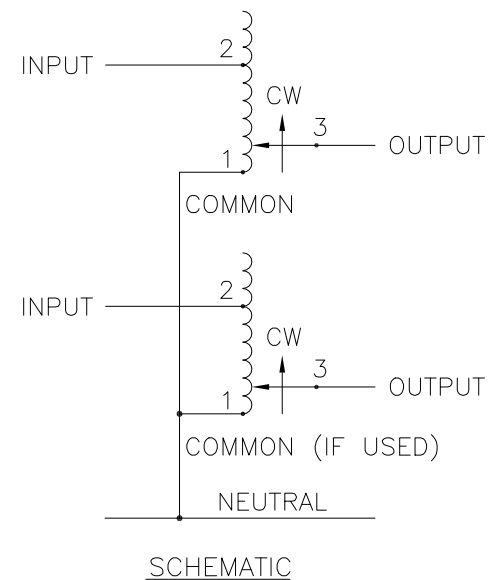
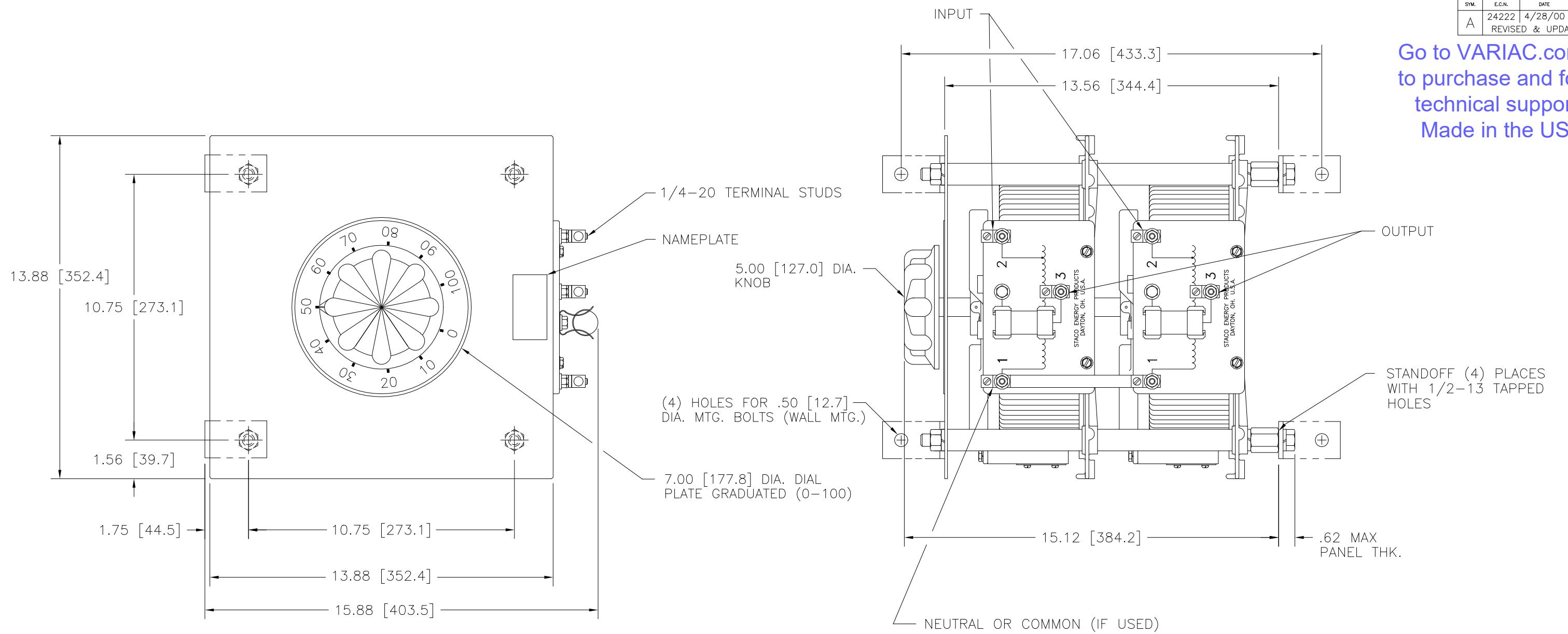


DWG. NO.	031-6015		
REVISIONS			
SYM.	E.C.N.	DATE	APVD.
A	24222	4/28/00	
REVISED & UPDATED			

Go to VARIAC.com
to purchase and for
technical support.
Made in the USA



WIRING	INPUT		OUTPUT			SHAFT ROTATION TO INCREASE VOLTAGE	TERMINAL CONNECTIONS	
	VOLTS	HERTZ	VOLTS	CONSTANT CURRENT LOAD			FOR INCREASING VOLTAGE AS VIEWED FROM ROTOR END	
				MAX. AMPS	MAX. KVA		INPUT	OUTPUT
THREE PHASE OPEN DELTA	120	50/60	0-140	50	12.1	CW	2-1-2	3-1-3

UNLESS OTHERWISE SPECIFIED, TOLERANCE IS #				UNITS		TITLE: SPEC. CONTROL DRAWING				
DECIMALS	HOLES	ANGLES	DRAFT	IN [mm]		TYPE: 5011-2D				
.XX	.002	1°	1-1/2°	ALL DIMENSIONS APPLY AFTER PLATING		DRAWN BY: TIM RAU		DATE: 12/14/95	FIRST USED ON: DO NOT SCALE DWG.	CUSTOMER APPROVAL: DATE:
MATERIAL:				SCALE: .50=1		CHECKER: DATE:		WEIGHT APPROX. 134 LBS.	CODE IDENT. NO. 83008	DWG. NO. 031-6015
The information and design disclosed herein was originated by and is the property of STACO ENERGY PRODUCTS CO., which reserves all patent, proprietary, design, manufacturing, reproduction, use and sale rights thereto, and to any article disclosed therein except to the extent rights are expressly granted to others. The foregoing does not apply to vendor proprietary parts.				ENGINEER: DATE:		SCALE: .50=1		SHEET 1 OF 1		DWG. NO. 031-6015