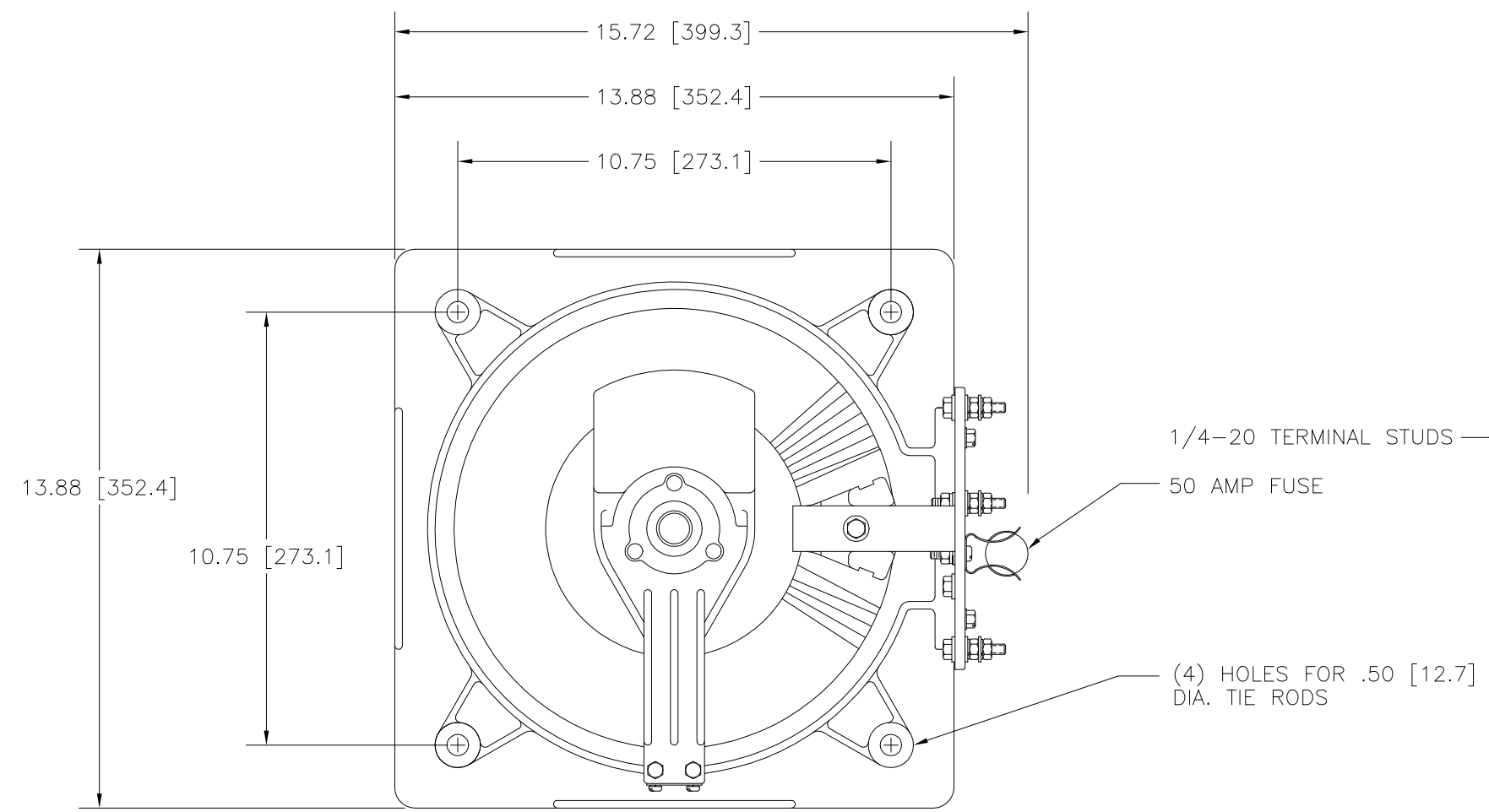
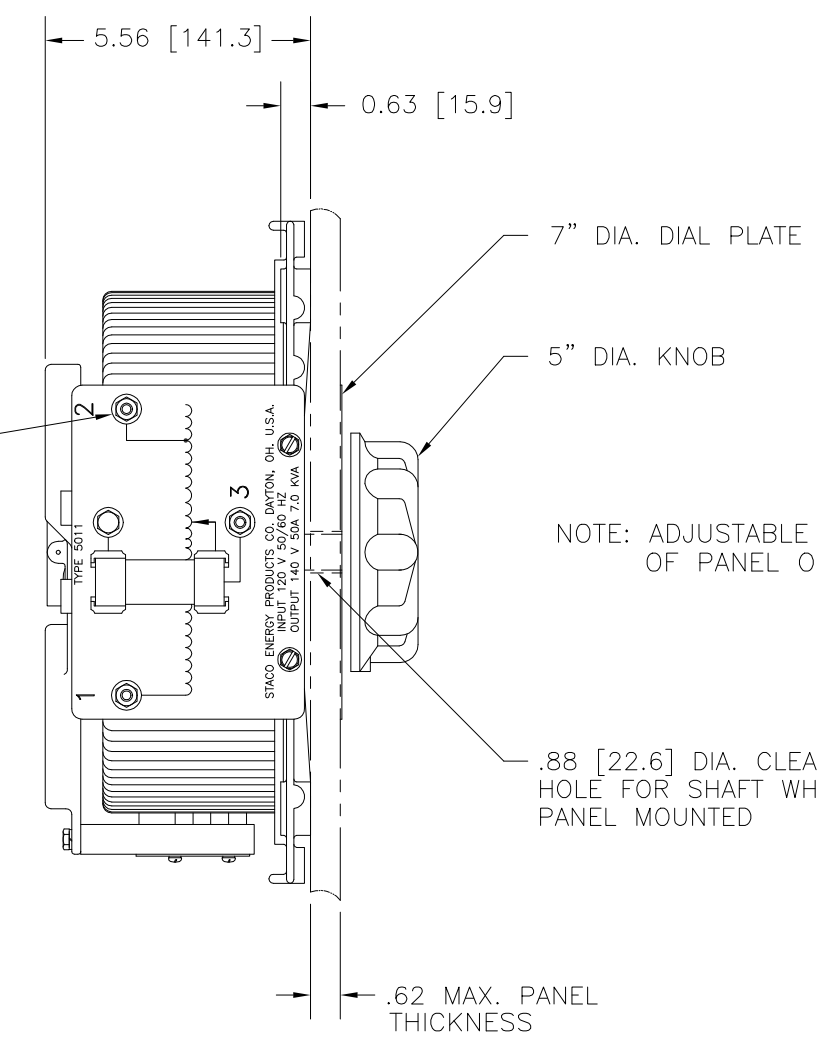


DWG. NO.	031-6001		
REVISIONS			
SYM.	E.C.N.	DATE	APVD.
A	23330	2/13/97	
REVISED & UPDATED			
B	24309	8/30/00	
REVISED & UPDATED			

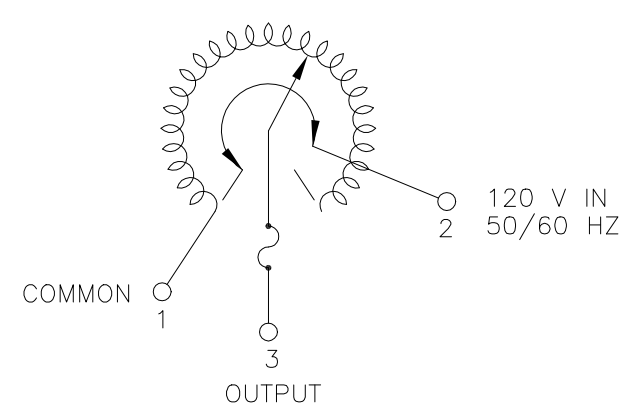
Go to www.VARIAC.com
to purchase and for
technical support.
Made in the USA



1/4-20 TERMINAL STUDS
50 AMP FUSE
(4) HOLES FOR .50 [12.7] DIA. TIE RODS



NOTE: ADJUSTABLE SHAFT PERMITS BACK OF PANEL OR BENCH MOUNTING.



SCHEMATIC
VIEW FROM ROTOR END

SPECIFICATIONS								
WIRING	INPUT		OUTPUT			SHAFT ROTATION TO INCREASE VOLTAGE	TERMINAL CONNECTIONS	
	VOLTS	HERTZ	VOLTS	CONSTANT CURRENT LOAD			FOR INCREASING VOLTAGE AS VIEWED FROM ROTOR END	
				MAX. AMPS	MAX. KVA		INPUT	OUTPUT
SINGLE PHASE	120	50/60	0-140	50	7.0	CW	1-2	1-3

UNLESS OTHERWISE SPECIFIED, TOLERANCE IS #				UNITS		TITLE:	
DECIMALS	HOLES	ANGLES	DRAFT	IN	IN [mm]	SPEC. CONTROL DWG.	
.XX	+.014	1°	1-1/2°			VARIABLE TRANSFORMER	
.XXX	.005					TYPE: 5011	
MATERIAL:				ALL DIMENSIONS APPLY AFTER PLATING		DRAWN BY	
						TIM RAU	
						DATE	
						12/13/95	
						FIRST USED ON	
						DO NOT SCALE DWG.	
						CUSTOMER APPROVAL	
						DATE	
						DWG. NO.	
						031-6001	

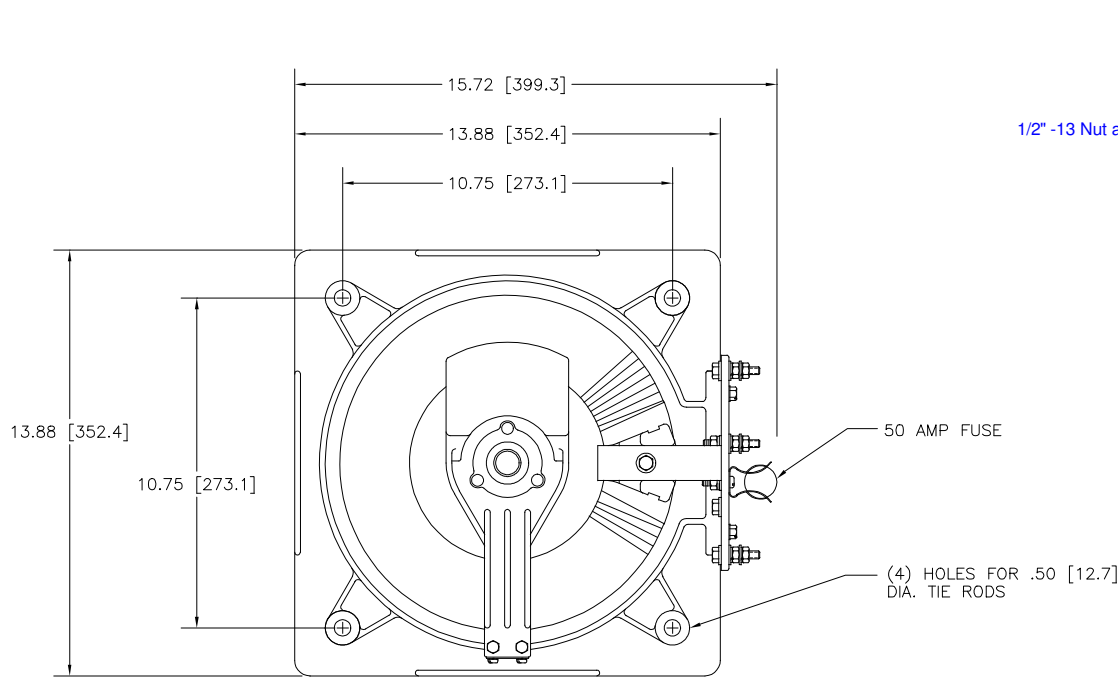


The information and design disclosed herein was originated by and is the property of STACO ENERGY PRODUCTS CO., which reserves all patent, proprietary, design, manufacturing, reproduction, use and sale rights thereto, and to any article disclosed therein except to the extent rights are expressly granted to others. The foregoing does not apply to vendor proprietary parts.

CHECKER
ENGINEER
DATE
SCALE .5=1
SHEET 1 OF 1

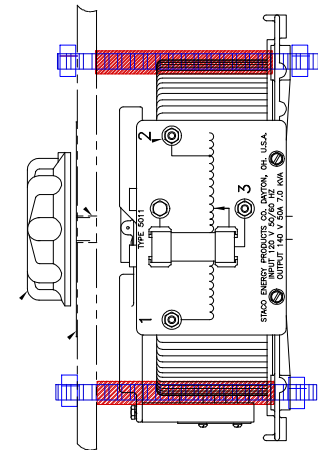
DWG. NO. 031-6001

DWG. NO.	031-6001		
REV. NO.	REVISIONS		
SYMBOL	DATE	BY	APP'D.
A	2/13/97	TIM RAU	REVISED & UPDATED
B	8/30/00	TIM RAU	REVISED & UPDATED



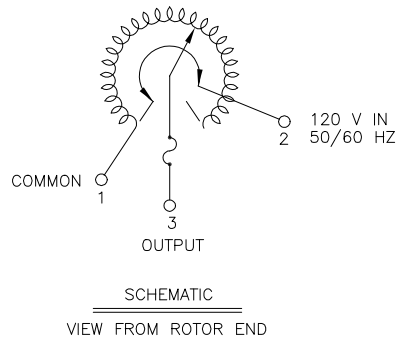
0.75"OD 0.625 ID Steel Tube (4) Places
5.75 NOM.

1/2" -13 Nut and Lock washers (8) Places
1/2" -13 Threaded Rod (4) places
8.50 NOM.



NOTE: ADJUSTABLE SHAFT PERMITS BACK OF PANEL OR BENCH MOUNTING.

.88 [22.6] DIA. CLEARANCE HOLE FOR SHAFT WHEN PANEL MOUNTED



Recommended panel mounting for CW Increase

Mounting hardware is not included

WIRING	INPUT		OUTPUT		SHAFT ROTATION TO INCREASE VOLTAGE	TERMINAL CONNECTIONS	
	VOLTS	HERTZ	VOLTS	CONSTANT CURRENT LOAD		FOR INCREASING VOLTAGE AS VIEWED FROM ROTOR END	
						MAX. AMPS	MAX. KVA
SINGLE PHASE	120	50/60	0-140	50	7.0	CW	1-2 1-3

UNLESS OTHERWISE SPECIFIED, TOLERANCE IS ± .001 IN DIMS				TITLE: SPEC. CONTROL DWG. VARIABLE TRANSFORMER TYPE: 5011			
DATE	12/13/95	DATE	12/13/95	SCALE	.5=1	SHEET	1 OF 1
DESIGNED BY	TIM RAU	CHECKED BY		ENGINEER			