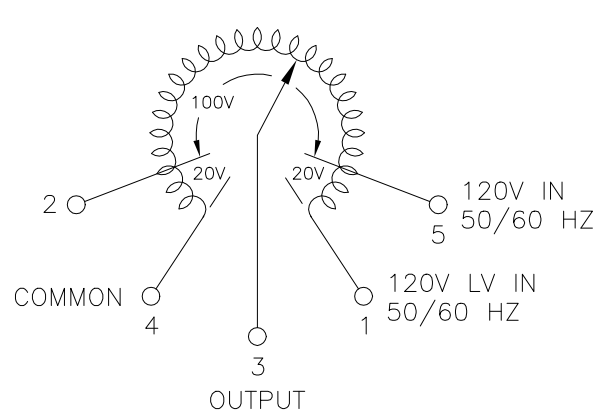
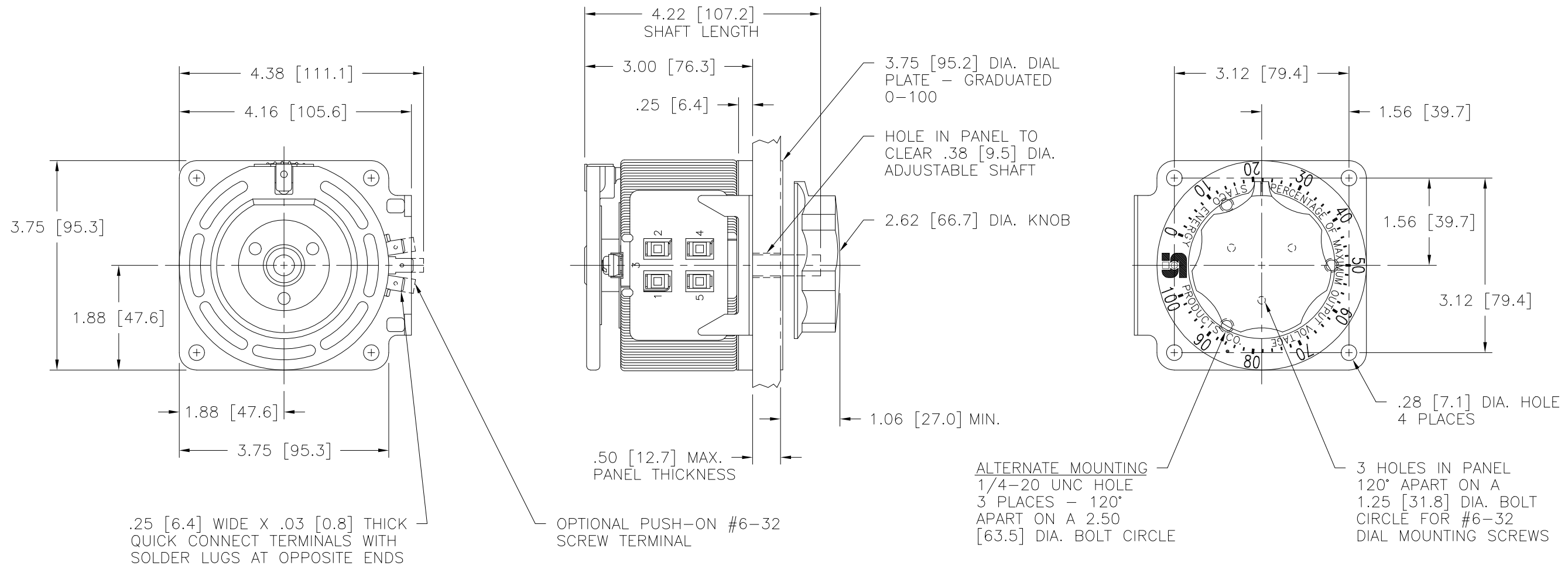


Go to VARIAC.com
to purchase and for
technical support.
Made in the USA



SCHEMATIC
VIEWED FROM BASE END
FOR OPPOSITE ROTATION INTERCHANGE EXTERNAL CONNECTIONS FROM 5 TO 2 AND 4 TO 1
FUSE RECOMMENDED BUT NOT SUPPLIED

| SPECIFICATIONS | | | | | | | | | | | | |
|----------------|-------|-------|--------|-----------------------|----------|-------------------------|------------------------------------|--|-------|--------|--------|--|
| WIRING | INPUT | | OUTPUT | | | | SHAFT ROTATION TO INCREASE VOLTAGE | TERMINAL CONNECTIONS | | | | |
| | VOLTS | HERTZ | VOLTS | CONSTANT CURRENT LOAD | | CONSTANT IMPEDANCE LOAD | | FOR INCREASING VOLTAGE AS VIEWED FROM BASE END | | | | |
| | | | | MAX. AMPS | MAX. KVA | MAX. AMPS | | MAX. KVA | INPUT | JUMPER | OUTPUT | |
| SINGLE PHASE | 120 | 50/60 | 0-120 | 5.0 | 0.60 | 7.0 | 0.84 | CW | 1-4 | --- | 4-3 | |
| | | | 0-140 | 5.0 | 0.70 | --- | --- | CCW | 1-4 | --- | 1-3 | |
| | | | | | | | | CW | 4-5 | --- | 4-3 | |
| | | | | | | | | CCW | 1-2 | --- | 1-3 | |

UNLESS OTHERWISE SPECIFIED, TOLERANCE IS # DECIMALS Holes .03 ANGLES 1° DRAFT 1-1/2° UNITS IN [mm]

MATERIAL: ALL DIMENSIONS APPLY AFTER PLATING

THE INFORMATION AND DESIGN DISCLOSED HEREIN WAS ORIGINATED BY AND IS THE PROPERTY OF STACO ENERGY PRODUCTS CO., WHICH RESERVES ALL PATENT, PROPRIETARY, DESIGN, MANUFACTURING, REPRODUCTION, USE AND SALE RIGHTS THEREIN, AND TO ANY ARTICLE DISCLOSED THEREIN EXCEPT TO THE EXTENT RIGHTS ARE EXPRESSLY GRANTED TO OTHERS. THE FOREGOING DOES NOT APPLY TO VENDOR PROPRIETARY PARTS.

DATE: 3/11/99
SCALE: 1=1

STACO ENERGY PRODUCTS CO. A COMPONENTS CORPORATION OF AMERICA COMPANY DAYTON, OHIO U.S.A.

83008
D 031-0460