

Go to VARIAC.com
 to purchase and for
 technical support.
 Made in the USA

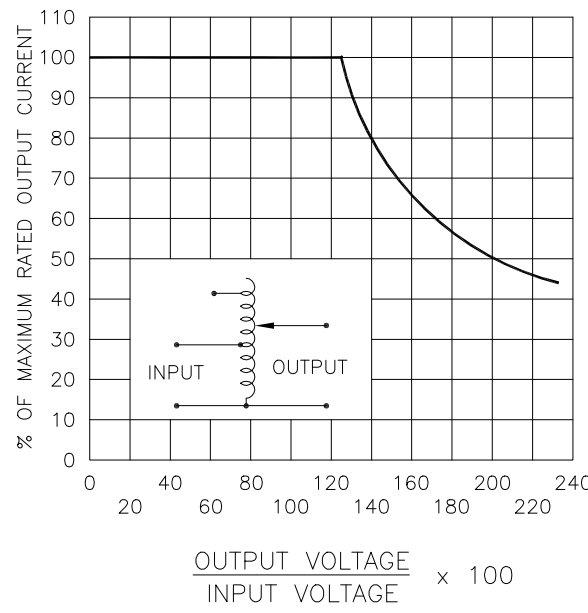
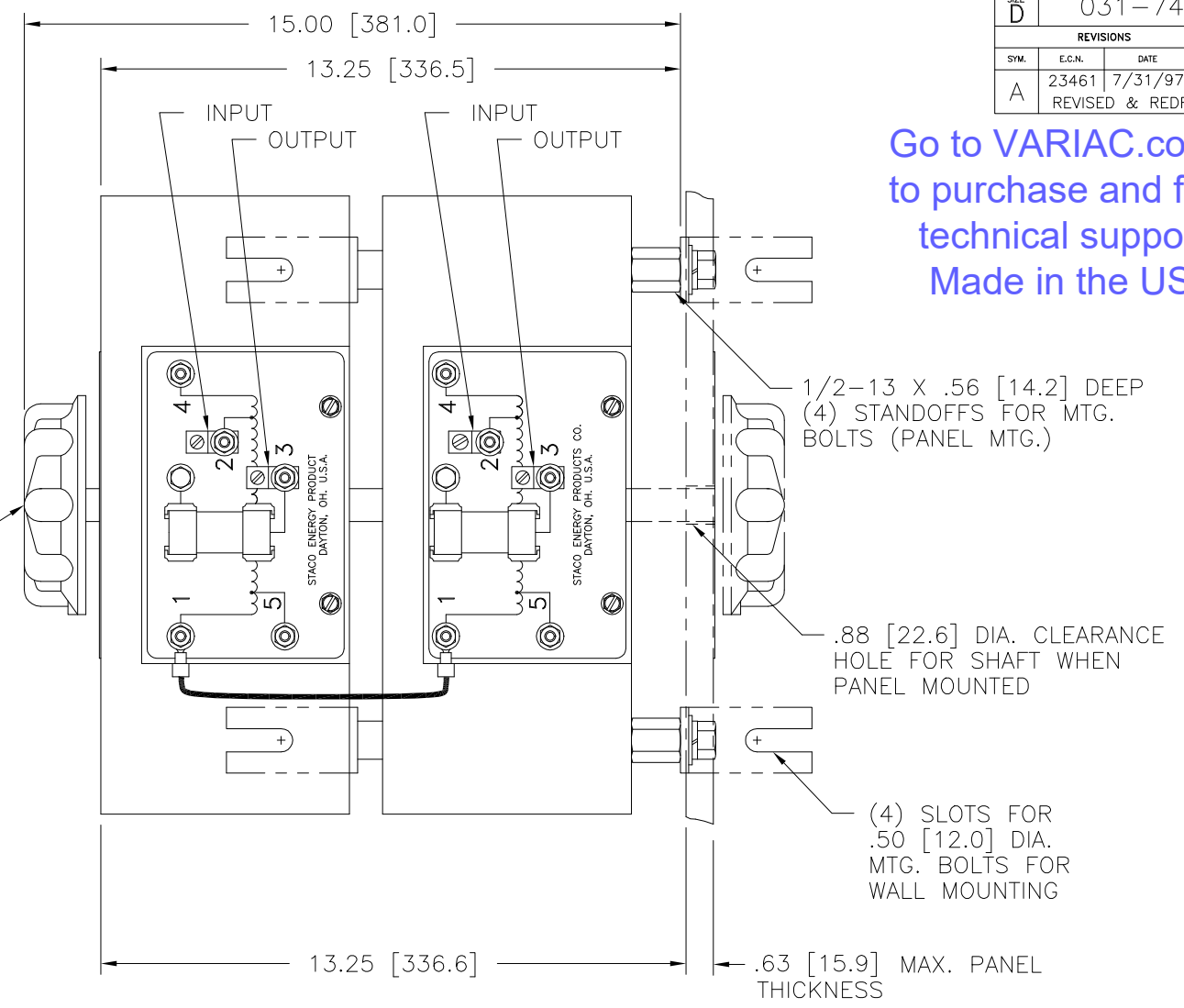
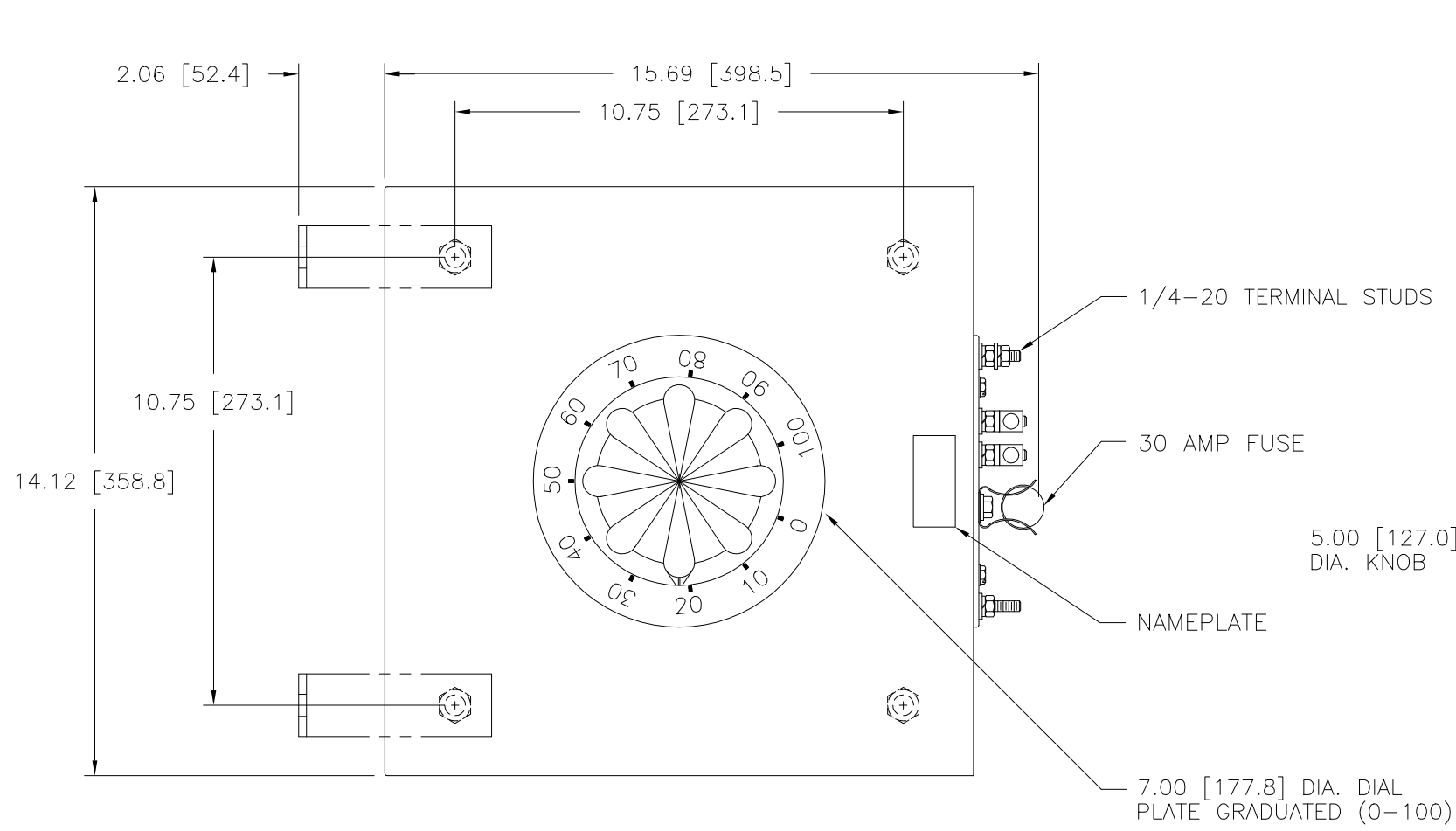
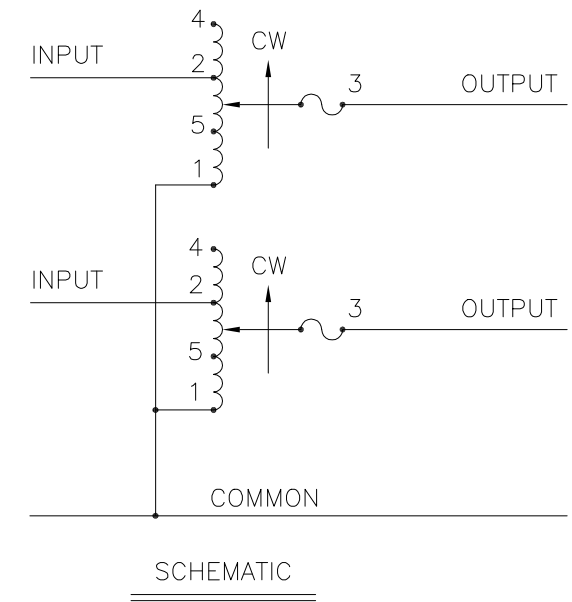


FIGURE A
 MAXIMUM OUTPUT CURRENT OF ANY
 DUAL INPUT VOLTAGE OR VOLTAGE DOUBLER
 UNIT OPERATED AT LOWER INPUT VOLTAGE.



* MAXIMUM OUTPUT CURRENT IN OUTPUT VOLTAGE RANGE FROM 0 TO 25 PERCENT ABOVE LINE VOLTAGE. AT HIGHER OUTPUT VOLTAGES, OUTPUT CURRENT MUST BE REDUCED ACCORDING TO RATING CURVE (SEE FIGURE A).
 ++ MAXIMUM KVA AT MAXIMUM OUTPUT AND CORRESPONDING DE-RATED CURRENT. MAXIMUM KVA AT LOWER OUTPUT VOLTAGES MAY BE CALCULATED FROM RATING CURVE, (SEE FIGURE A).
 V.D. = VOLTAGE DOUBLER.

| SPECIFICATIONS | | | | | | | | | |
|---------------------|-------|-------|--------|--------------|----------|------------------------------------|--|--------|--------|
| WIRING | INPUT | | OUTPUT | | | SHAFT ROTATION TO INCREASE VOLTAGE | TERMINAL CONNECTIONS FOR INCREASING VOLTAGE AS VIEWED FROM ROTOR END | | |
| | VOLTS | HERTZ | VOLTS | MAX. AMPS | MAX. KVA | | INPUT | JUMPER | OUTPUT |
| SINGLE PHASE SERIES | 480 | 50/60 | 0-480 | 28 | 13.5 | CW | 4-4 | --- | 3-3 |
| | | | 0-560 | 28 | 15.7 | CW | 2-2 | --- | 3-3 |
| | 240 | 50/60 | 0-560 | * 28-12 V.D. | 6.8 ++ | CW | 5-5 | --- | 3-3 |

UNLESS OTHERWISE SPECIFIED, TOLERANCE IS # DECIMALS Holes .002 ANGLES 1° DRAFT 1-1/2° UNITS IN [mm]
 MATERIAL: ALL DIMENSIONS APPLY AFTER PLATING
 TITLE: SPEC. CONTROL DRAWING VARIABLE TRANSFORMER TYPE: 5021C-2S
 DRAWN BY: TIM RAU DATE: 8/1/97 FIRST USED ON: DO NOT SCALE DWG. CUSTOMER APPROVAL: DATE:
 CHECKER: ENGINEER DATE: WEIGHT APPROX. 134 LBS. CODE IDENT. NO. 83008 DWG. NO. 031-7439
 SCALE: .5=1 SHEET 1 OF 1

