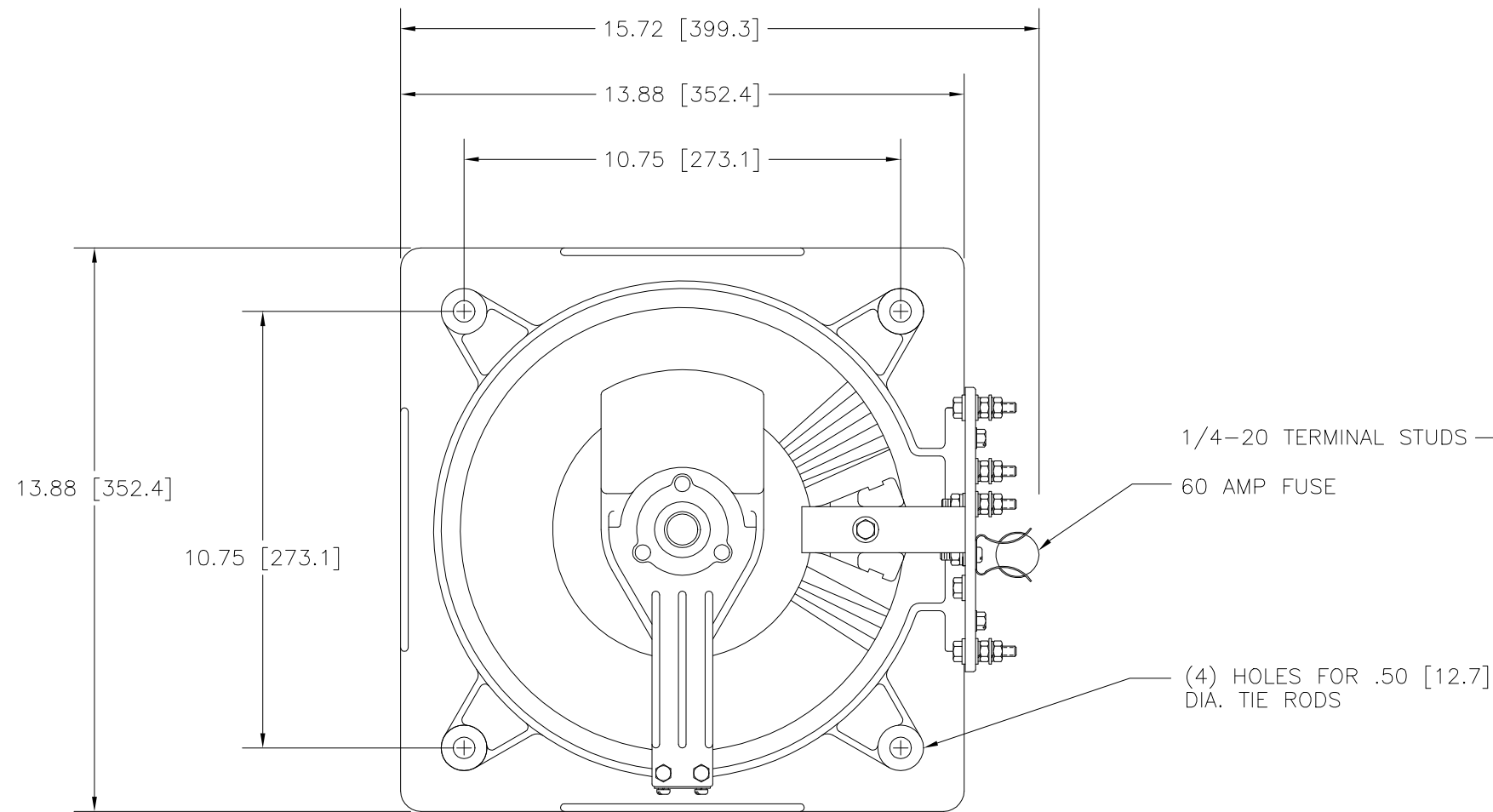
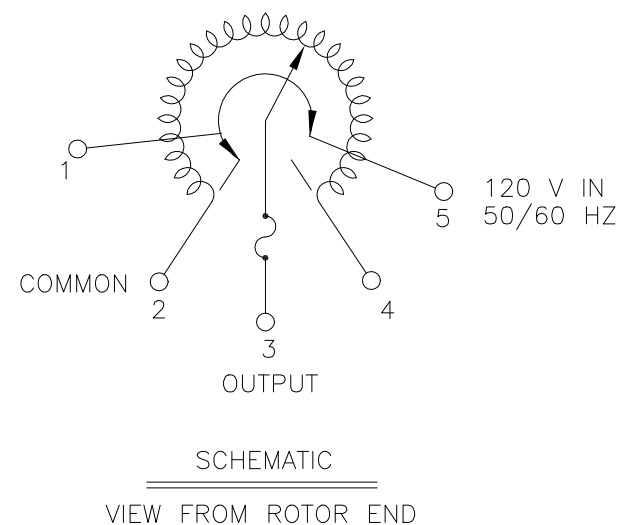
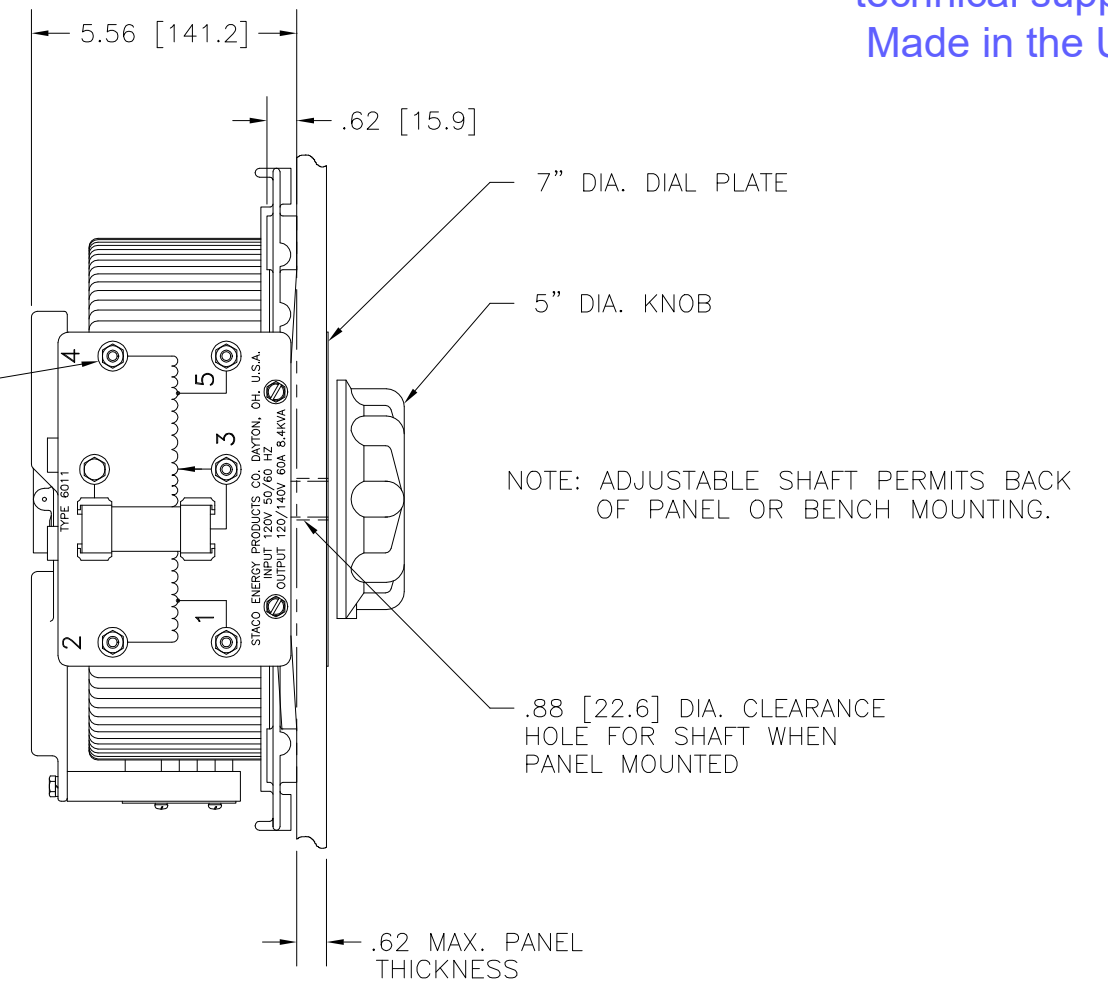


DWG. NO.	032-6001		
REVISIONS			
SYM.	E.C.N.	DATE	APVD.
A	23325	2/13/97	
REVISED & UPDATED			

Go to [VARIAC.com](http://VARIAC.com)  
to purchase and for  
technical support.  
Made in the USA



1/4-20 TERMINAL STUDS  
60 AMP FUSE  
(4) HOLES FOR .50 [12.7] DIA. TIE RODS



WIRING	INPUT		OUTPUT			SHAFT ROTATION TO INCREASE VOLTAGE	TERMINAL CONNECTIONS	
	VOLTS	HERTZ	VOLTS	CONSTANT CURRENT LOAD			FOR INCREASING VOLTAGE AS VIEWED FROM ROTOR END	
				MAX. AMPS	MAX. KVA		INPUT	OUTPUT
SINGLE PHASE	120	50/60	0-120	60	7.2	CW	2-4	2-3
			0-140	60	8.4	CCW	4-2	4-3
						CW	2-5	2-3
						CCW	4-1	4-3

UNLESS OTHERWISE SPECIFIED, TOLERANCE IS #				UNITS		TITLE:	
DECIMALS	HOLES	ANGLES	DRAFT	IN	MM	SPEC. CONTROL DWG.	
.XX	±.01	1°	1-1/2°			VARIABLE TRANSFORMER	
.XXX	.005					TYPE: 6011	
MATERIAL:				ALL DIMENSIONS APPLY AFTER PLATING		DRAWN BY	
						TIM RAU	
						DATE	
						2/2/96	
						FIRST USED ON	
						DO NOT SCALE DWG.	
						CUSTOMER APPROVAL	
						DATE	
						WEIGHT APPROX.	
						CODE IDENT. NO.	
						83008	
						DWG. NO.	
						032-6001	
						SCALE	
						.5=1	
						SHEET 1 OF 1	
						DWG. NO.	
						032-6001	



STACO ENERGY PRODUCTS CO.  
DAYTON, OHIO U.S.A.