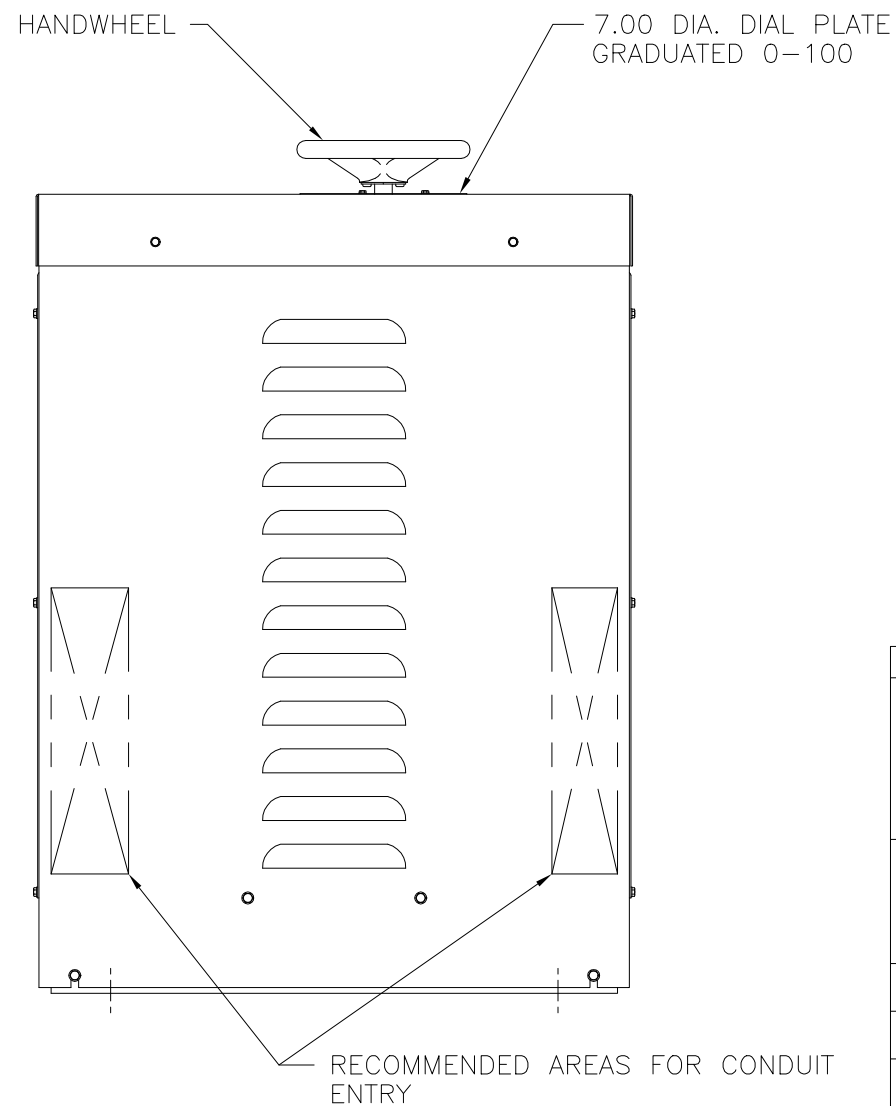
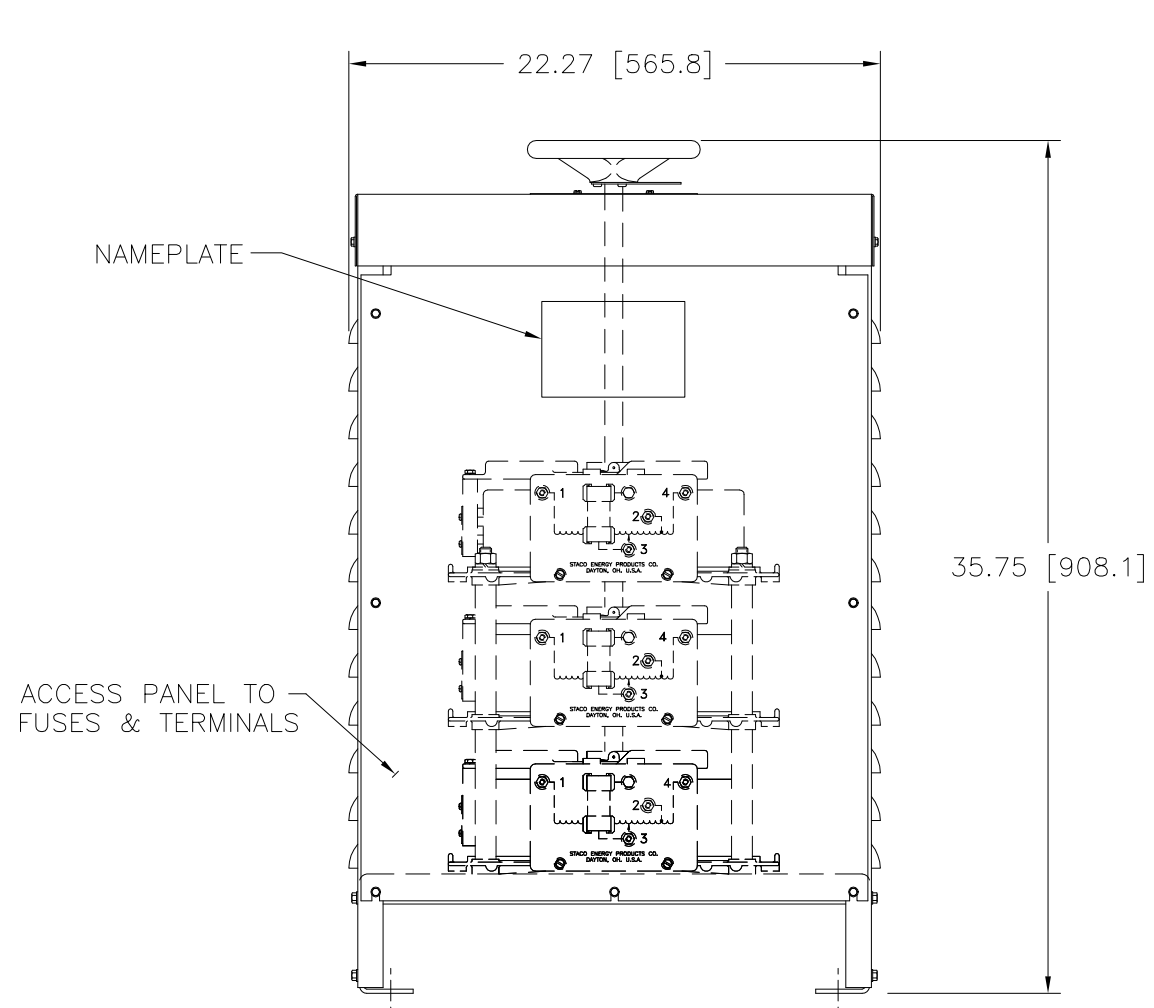


Go to VARIAC.com
 to purchase and for
 technical support.
 Made in the USA



SPECIFICATIONS								
WIRING	INPUT		OUTPUT			SHAFT ROTATION FOR VOLTAGE INCREASE	TERMINAL CONNECTIONS FOR INCREASING VOLTAGE AS VIEWED FROM TOP	
	VOLTS	HERTZ	VOLTS	CONSTANT CURRENT LOAD			INPUT	OUTPUT
THREE PHASE WYE	240	60	0-240	60	24.9	CW	4-4-4	3-3-3
			0-280	60	29.1	CW	2-2-2	3-3-3
UNLESS OTHERWISE SPECIFIED, TOLERANCE IS #			TITLE: SPECIFICATION CONTROL DRAWING					
DECIMALS .12			VARIABLE TRANSFORMER					
Holes .03			6011E-3Y			DRAWN BY F. SEALE		
ANGLES 1°			DATE 8/28/96			DATE 8/28/96		
DRAFT 1-1/2"			FIRST USED ON 6011E-3Y			DO NOT SCALE DWG.		
UNITS IN (mm)			ALL DIMENSIONS APPLY AFTER PLATING			CHECKER		
MATERIAL			SCALE .25=1			ENGINEER		
The information and design disclosed herein was originated by and is the property of STACO ENERGY PRODUCTS CO., which reserves all patent, proprietary, design, manufacturing, reproduction, use and sale rights thereto, and to any article disclosed therein except to the extent rights are expressly granted to others. The foregoing does not apply to vendor proprietary parts.			SHEET 1 OF 1			DWG. NO. 032-6742		