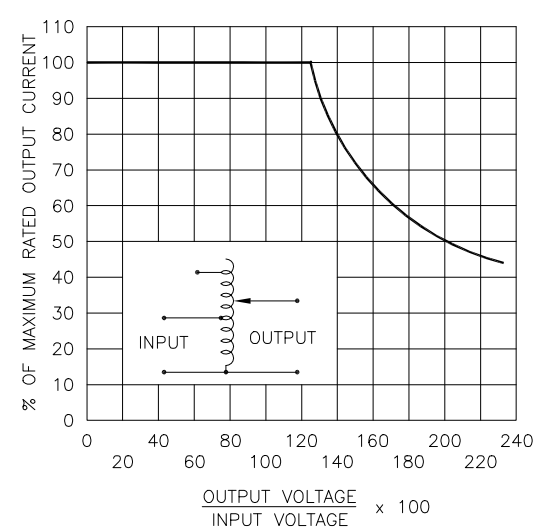
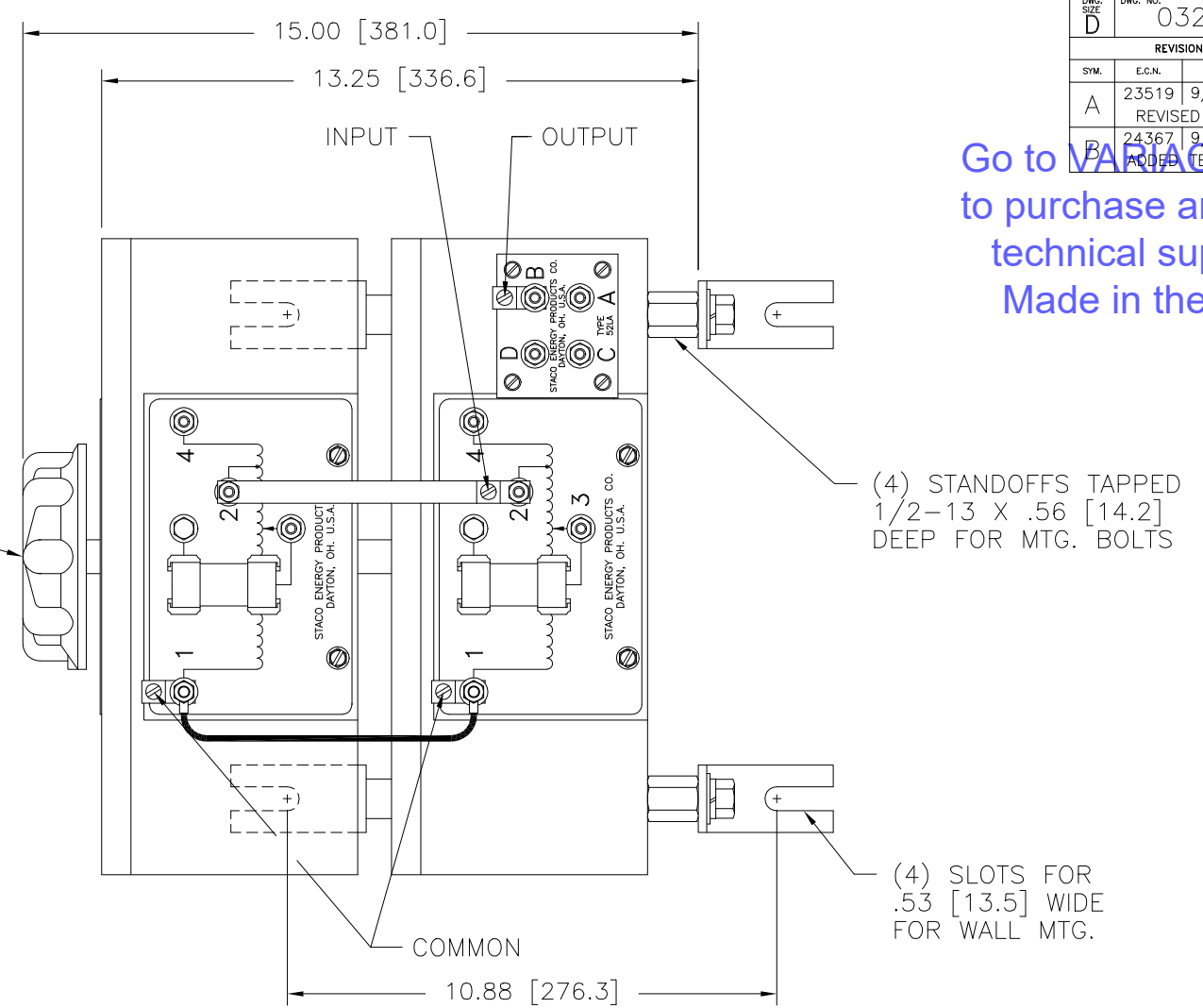
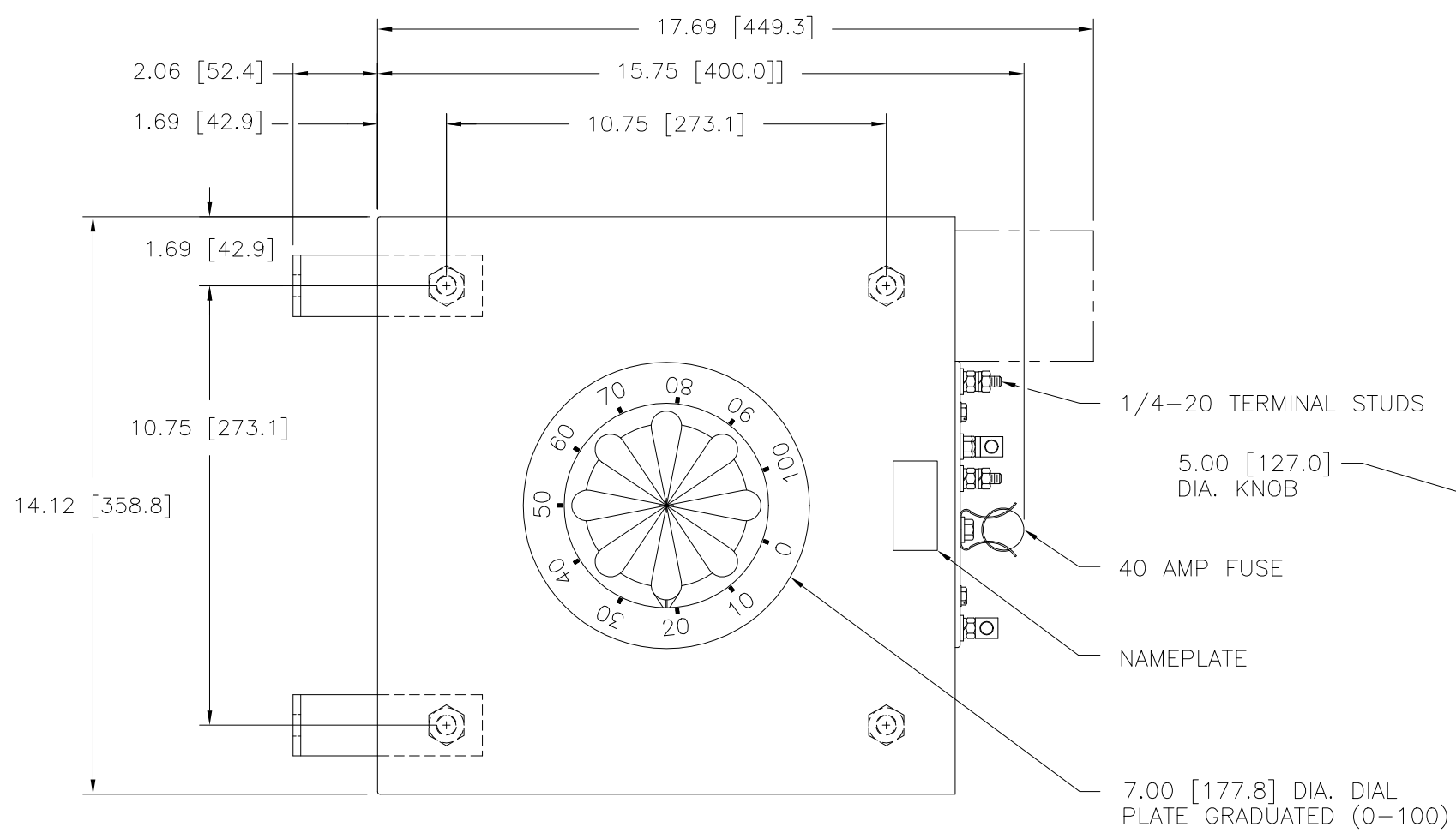
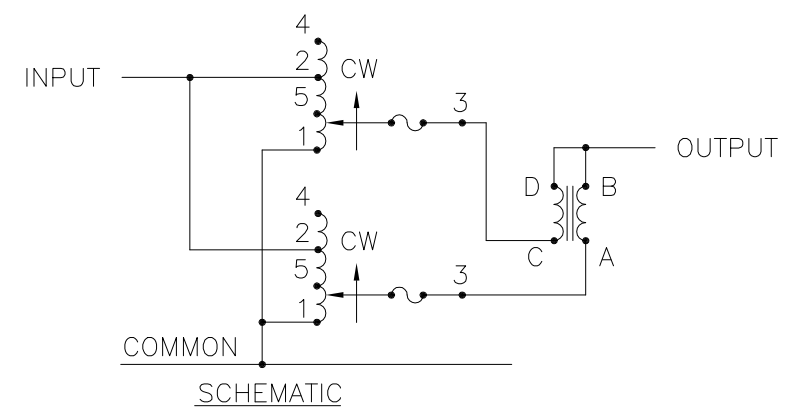


DWG. NO.	032-7427		
REVISIONS			
SYM.	E.C.N.	DATE	APVD.
A	23519	9/25/97	
	REVISED & UPDATE		
B	24367	9/20/00	
	ADDED TERM. STUDS #1		

Go to [VARIAC.com](http://www.VARIAC.com)  
to purchase and for  
technical support.  
Made in the USA



**FIGURE A**  
MAXIMUM OUTPUT CURRENT OF ANY  
DUAL INPUT VOLTAGE OR VOLTAGE DOUBLER  
UNIT OPERATED AT LOWER INPUT VOLTAGE.



\* MAXIMUM OUTPUT CURRENT IN OUTPUT VOLTAGE RANGE FROM 0 TO 25% ABOVE LINE VOLTAGE. AT HIGHER OUTPUT VOLTAGES, OUTPUT CURRENT MUST BE REDUCED ACCORDING TO RATING CURVE FIGURE A.  
++ MAXIMUM KVA AT MAXIMUM OUTPUT AND CORRESPONDING DE-RATED CURRENT. MAXIMUM KVA AT LOWER OUTPUT VOLTAGES MAY BE CALCULATED  
V.D. = VOLTAGE DOUBLER.

WIRING	INPUT		OUTPUT			SHAFT ROTATION FOR VOLTAGE INCREASE	TERMINAL CONNECTIONS FOR INCREASING VOLTAGE AS VIEWED FROM TOP	
	VOLTS	HERTZ	VOLTS	CONSTANT CURRENT LOAD			INPUT	OUTPUT
				MAX. AMPS	MAX. KVA			
SINGLE PHASE PARALLEL	240	50/60	0-240	70	16.8	CW	1-4	1-B
			0-280	70	19.6		1-2	1-B
	120	50/60	0-280	70* -30 V.D.	8.4 ++	CW	1-5	1-B

UNLESS OTHERWISE SPECIFIED, TOLERANCE IS #				UNITS		TITLE: SPEC. CONTROL DRAWING				
DECIMALS	HOLES	ANGLES	DRAFT	IN	MM	SPEC. CONTROL DRAWING				
.XX	±.01	1°	1-1/2°			TYPE: 6020C-2P				
MATERIAL:				ALL DIMENSIONS APPLY AFTER PLATING		DRAWN BY: TIM RAU		DATE: 9/25/97		
The information and design disclosed herein was originated by and is the property of STACO ENERGY PRODUCTS CO., which reserves all patent, proprietary, design, manufacturing, reproduction, use and sale rights thereto, and to any article disclosed therein except to the extent rights are expressly granted to others. The foregoing does not apply to vendor proprietary parts.				CHECKER:		DATE:		WEIGHT APPROX. 148 LBS.		
				ENGINEER:		DATE:		SCALE .5=1	SHEET 1 OF 1	
								DO NOT SCALE DWG.		CUSTOMER APPROVAL DATE
						CODE IDENT. NO. 83008		DWG. NO. 032-7427		