

Go to VARIAC.com
 to purchase and for
 technical support.
 Made in the USA

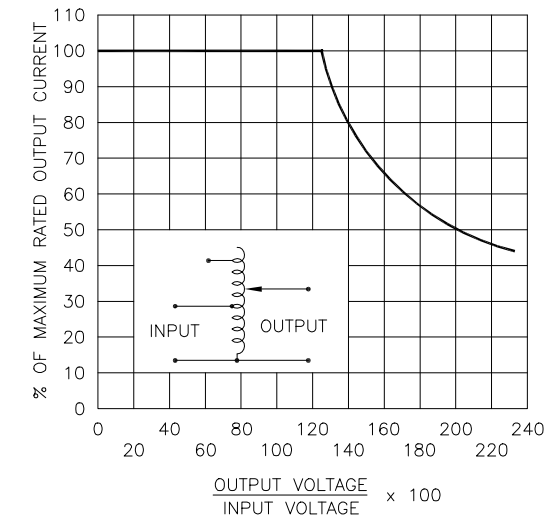
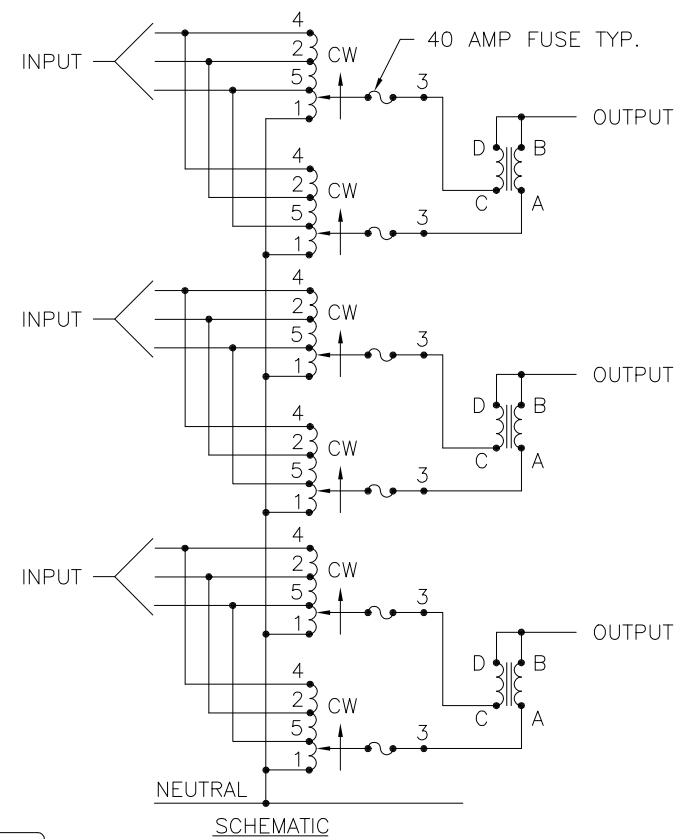
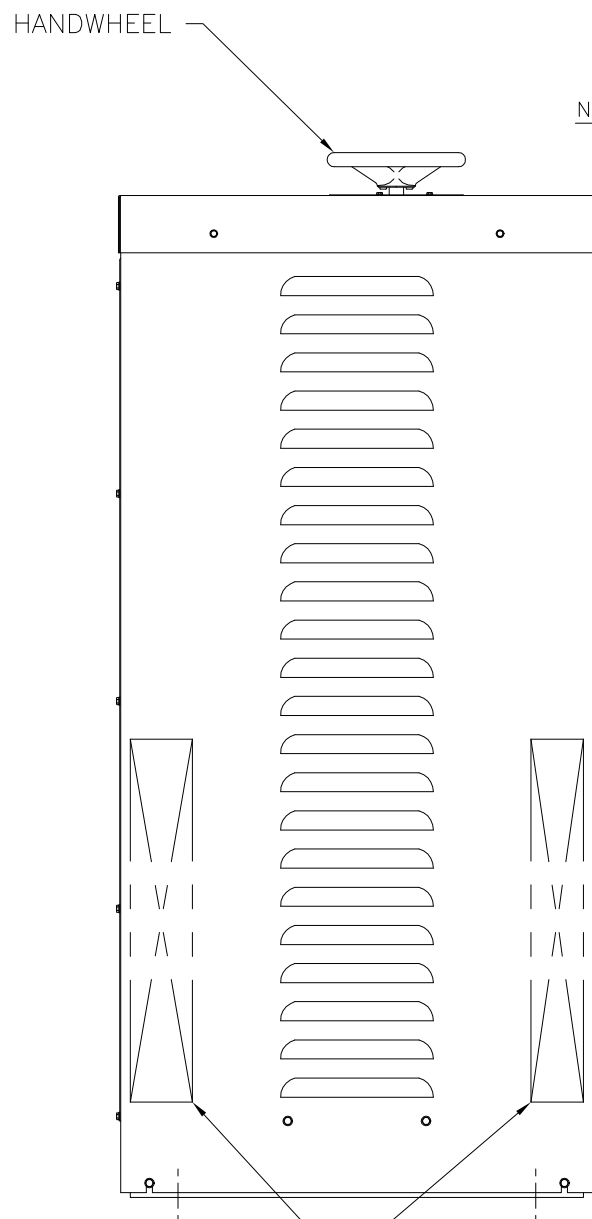
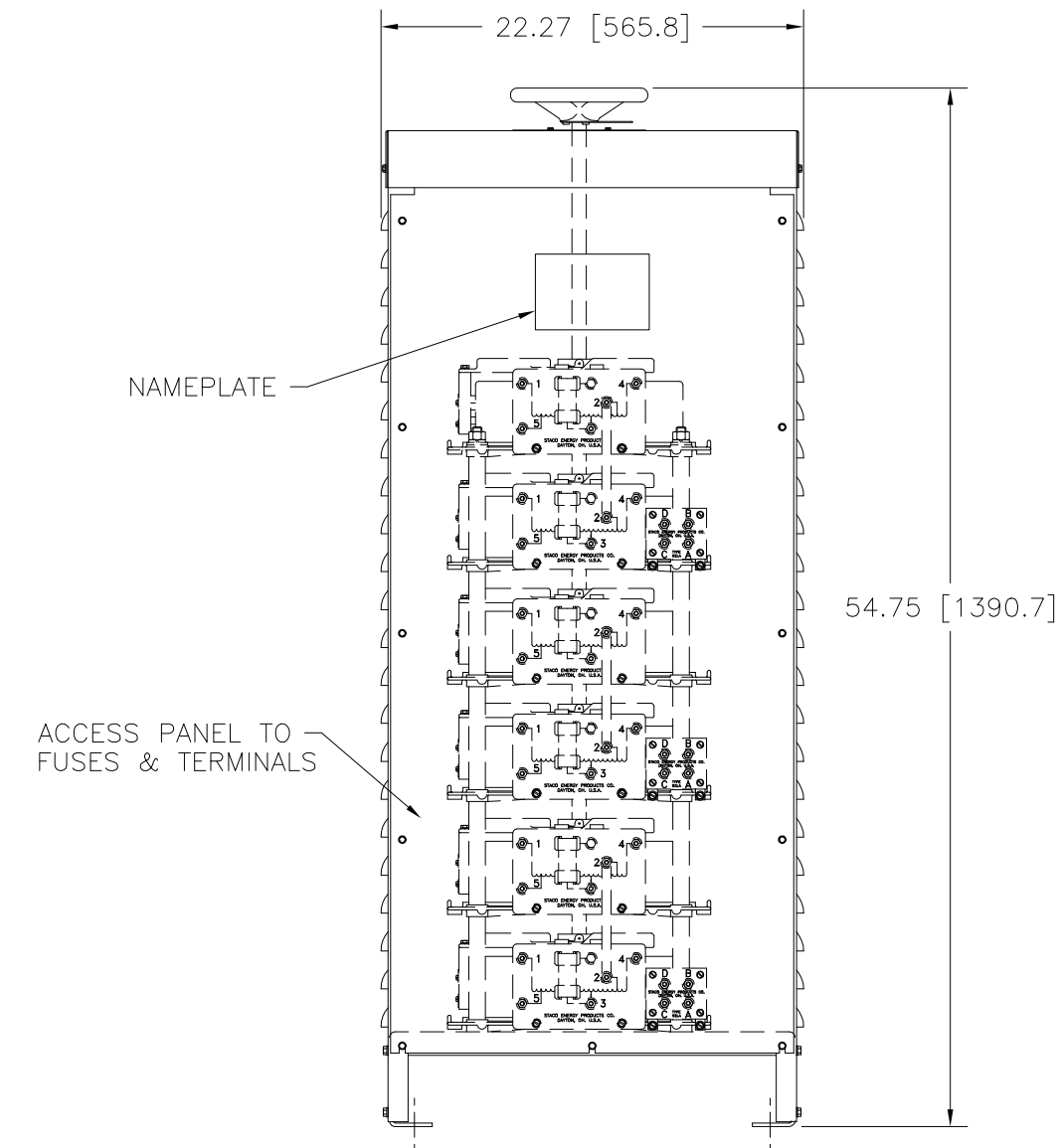
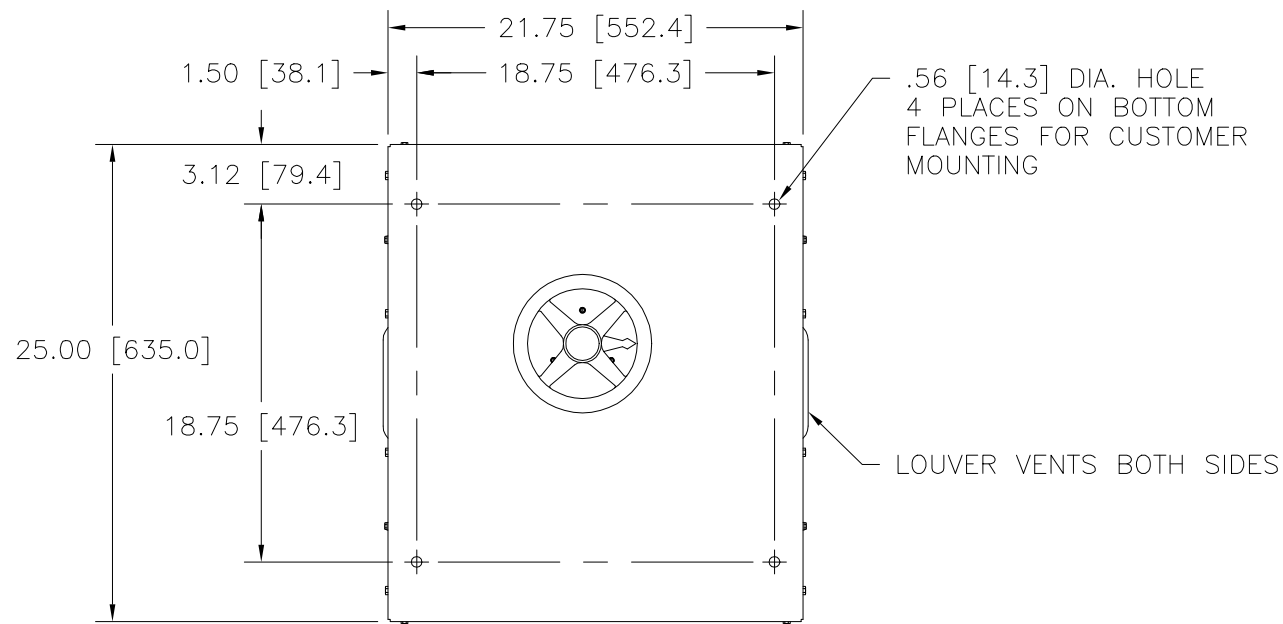


FIGURE A
 MAXIMUM OUTPUT CURRENT OF ANY
 DUAL INPUT VOLTAGE OR VOLTAGE DOUBLER
 UNIT OPERATED AT LOWER INPUT VOLTAGE.

* MAXIMUM OUTPUT CURRENT IN OUTPUT VOLTAGE RANGE FROM 0 TO 25 PERCENT ABOVE LINE VOLTAGE. AT HIGHER OUTPUT VOLTAGES, OUTPUT CURRENT MUST BE REDUCED ACCORDING TO RATING CURVE (SEE FIGURE A).

++ MAXIMUM KVA AT MAXIMUM OUTPUT AND CORRESPONDING DE-RATED CURRENT. MAXIMUM KVA AT LOWER OUTPUT VOLTAGES MAY BE CALCULATED FROM RATING CURVE, (SEE FIGURE A).

V.D. = VOLTAGE DOUBLER.

SPECIFICATIONS								
WIRING	INPUT		OUTPUT			SHAFT ROTATION FOR VOLTAGE INCREASE	TERMINAL CONNECTIONS FOR INCREASING VOLTAGE AS VIEWED FROM TOP	
	VOLTS	HERTZ	VOLTS	CONSTANT CURRENT LOAD			INPUT	OUTPUT
THREE PHASE WYE	480	50/60	0-480	70	58.1	CW	4-4-4	B-B-B
		60	0-560	70	67.8	CW	2-2-2	B-B-B
	240	60	0-560	70-30 V.D.	29.1 ++	CW	5-5-5	B-B-B

UNLESS OTHERWISE SPECIFIED, TOLERANCE IS #	UNITS	TITLE:
DECIMALS .12	IN [mm]	SPECIFICATION CONTROL DRAWING
HOLE .005		VARIABLE TRANSFORMER
ANGLES 1°		6020E-6Y
DRAFT 1-1/2*		
MATERIAL:	ALL DIMENSIONS APPLY AFTER PLATING	
DRAWN BY S.A. SMITH		DATE 11/28/94
CHECKER		DATE
ENGINEER		DATE
FIRST USED ON 6020E-6Y		DO NOT SCALE DWG.
WEIGHT APPROX.		CODE IDENT. NO. 83008
SCALE .2=1		SHEET 1 OF 1
CUSTOMER APPROVAL		DATE
DWG. NO. 032-8195		



The information and design disclosed herein was originated by and is the property of STACO ENERGY PRODUCTS CO., which reserves all patent, proprietary, design, manufacturing, reproduction, use and sale rights thereto, and to any article disclosed therein except to the extent rights are expressly granted to others. The foregoing does not apply to vendor proprietary parts.