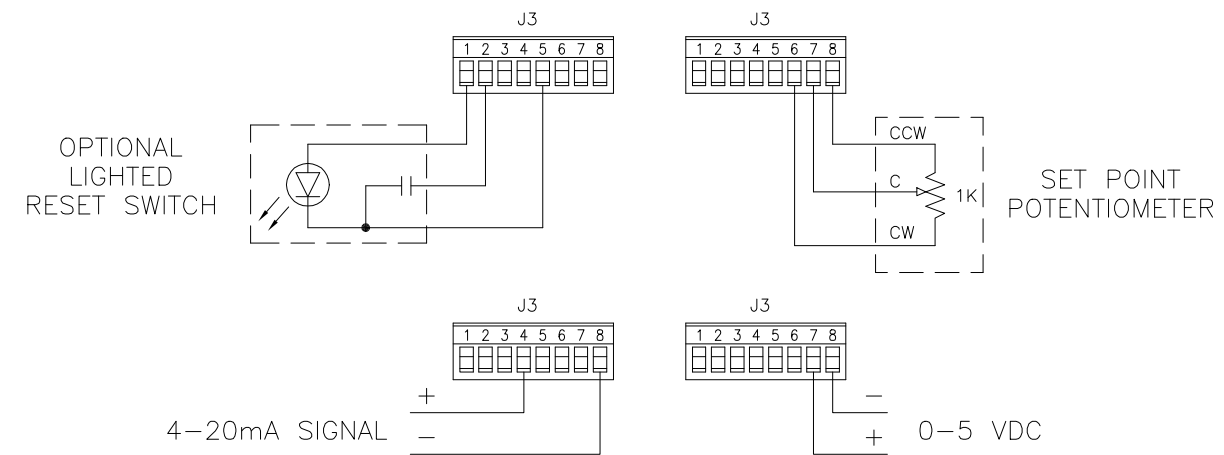
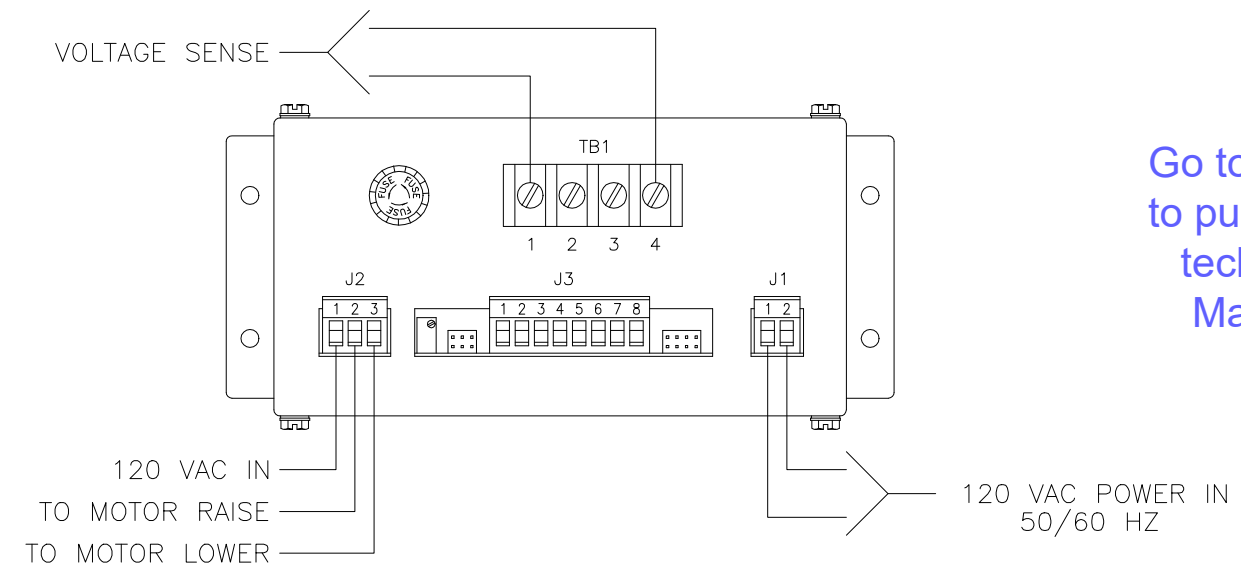
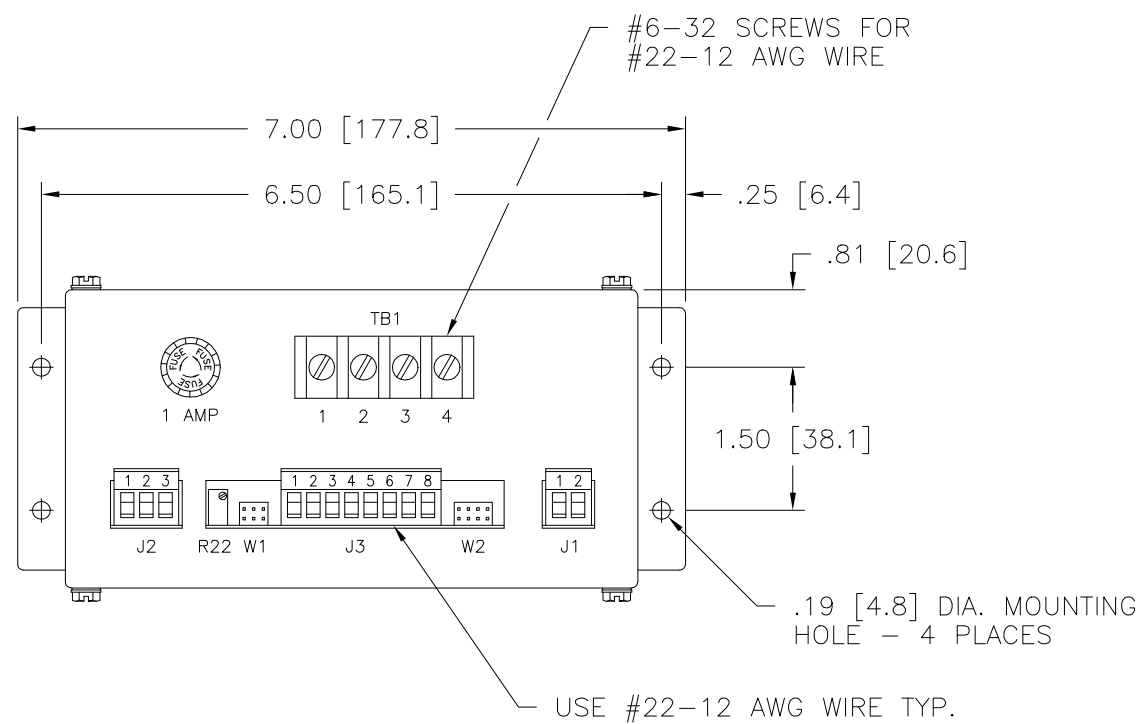
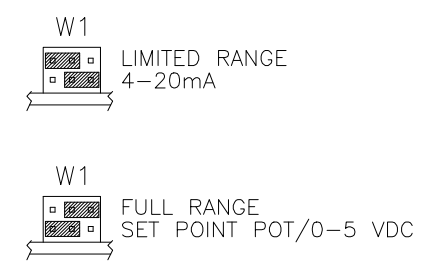
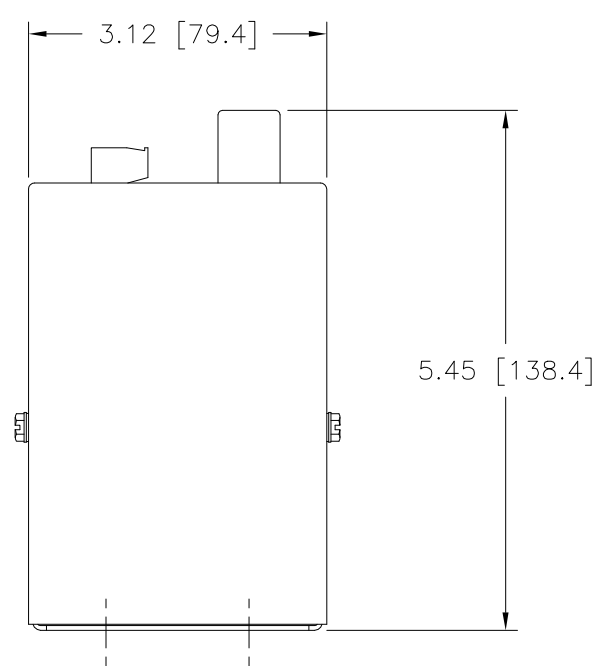
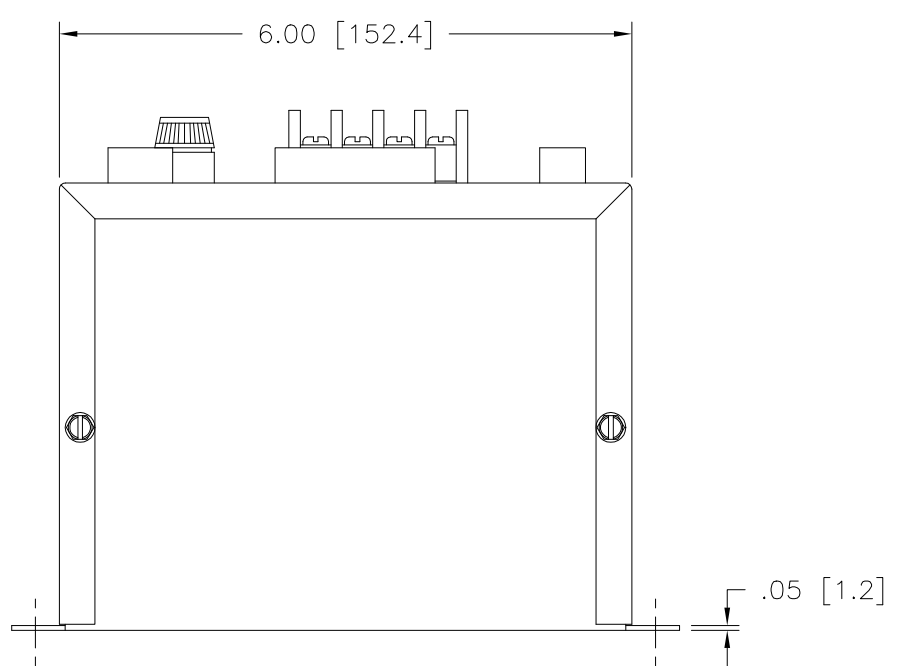


DWG. NO.	095-0553		
REVISIONS			
SYM.	E.C.N.	DATE	APVD.
A	23920	2/10/99	
	CLARIFIED DIAGRAMS		
B	24018	7/19/99	
	UPDATED PLOT WIRING		

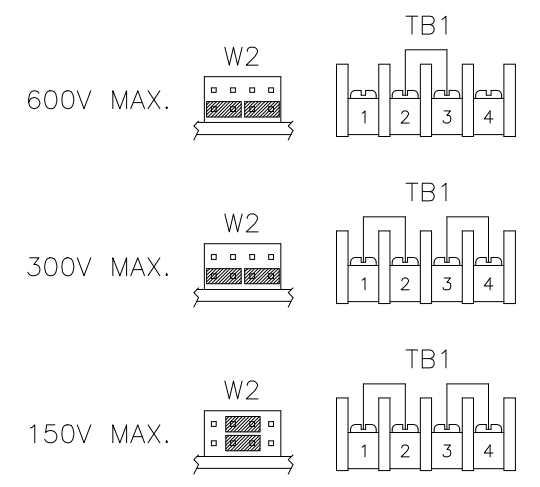
Go to www.VARIAC.com
to purchase and for
technical support.
Made in the USA



WIRING DIAGRAM



RANGE/SET POINT SELECTION
FULL RANGE/SET POINT POT
IS STANDARD



SENSE VOLTAGE SELECTION
300V IS STANDARD
(JUMPERS SUPPLIED WITH UNIT)

UNLESS OTHERWISE SPECIFIED, TOLERANCE IS #		UNITS		TITLE:		
DECIMALS	Holes	ANGLES	DRAFT	SPEC. CONTROL DRAWING		
.XX	.0000	.01	1°	FULL RANGE CONTROLLER		
.XXX	.005			A COMPONENTS CORPORATION OF AMERICA COMPANY		
MATERIAL:		ALL DIMENSIONS APPLY AFTER PLATING		DAYTON, OHIO U.S.A.		
The information and design disclosed herein was originated by and is the property of STACO ENERGY PRODUCTS CO., which reserves all patent, proprietary, design, manufacturing, reproduction, use and sale rights thereto, and to any article disclosed therein except to the extent rights are expressly granted to others. The foregoing does not apply to vendor proprietary parts.		DRAWN BY	DATE	FIRST USED ON	DO NOT SCALE DWG.	CUSTOMER APPROVAL
	S.A. SMITH	5/15/98	FRC-20			
CHECKER	DATE	WEIGHT APPROX.	CODE IDENT. NO.	DWG. NO.	DWG. NO.	
ENGINEER	DATE	3 LBS	83008	D	095-0553	
		SCALE	SHEET			
		1=1	1 OF 1			