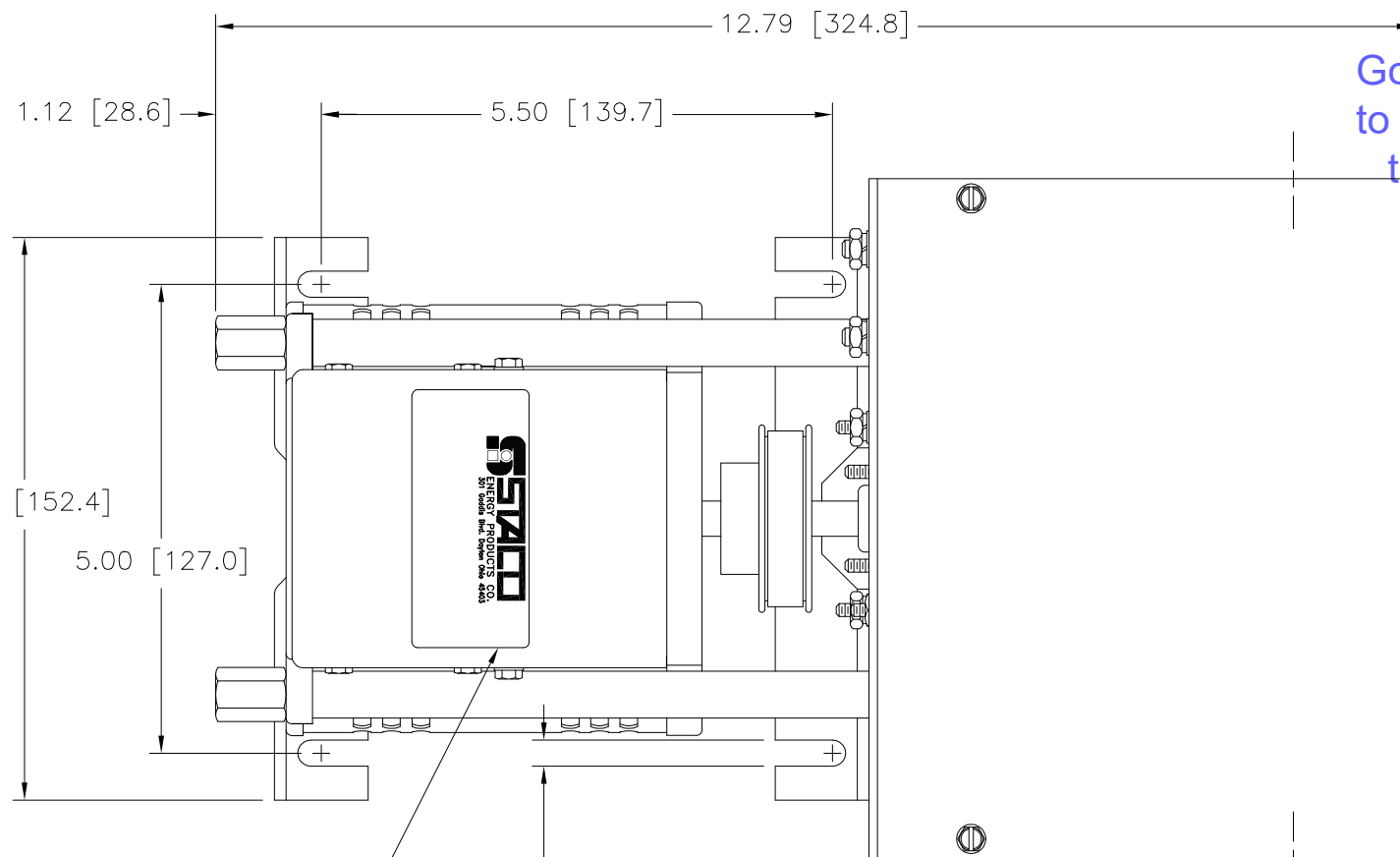


(4) STANDOFFS TAPPED
 1/4-28 X .38 [9.5] DEEP
 FOR MOUNTING BOLTS

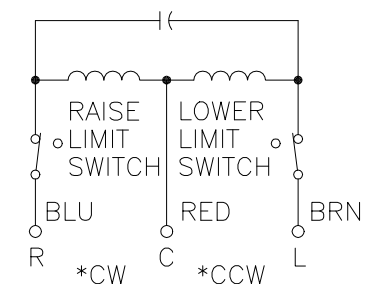
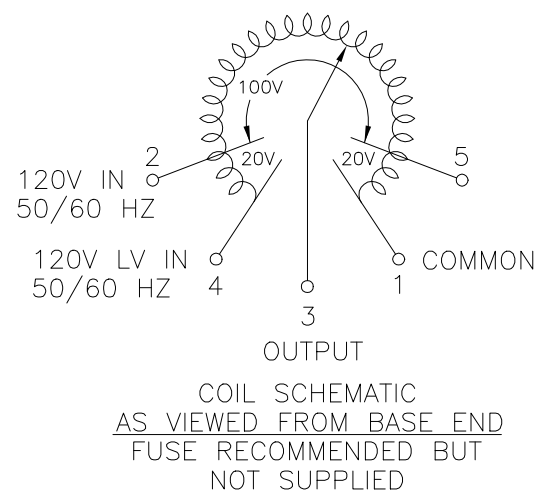
.88 [22.2] DIA. KNOCKOUT
 (2) PLACES FOR
 WIRING CONNECTIONS



NAMEPLATE
 .28 [7.1]
 (4) PLACES FOR
 CUSTOMER MOUNTING

.88 [22.2] DIA. KNOCKOUT
 (4) PLACES FOR
 MOTOR CONNECTIONS

Go to VARIAC.com
 to purchase and for
 technical support.
 Made in the USA



+ MOTOR DRIVEN UNITS USE TERMINAL CONNECTIONS FOR CCW INCREASING VOLTAGE, AS VIEWED FROM BASE END.

SPECIFICATIONS										
WIRING	INPUT		OUTPUT				SHAFT ROTATION TO INCREASE VOLTAGE	TERMINAL CONNECTIONS		
	VOLTS	HERTZ	VOLTS	CONSTANT CURRENT LOAD	CONSTANT IMPEDANCE LOAD	FOR INCREASING VOLTAGE AS VIEWED FROM BASE END +				
SINGLE PHASE	120	50/60	0-120	MAX. AMPS	MAX. KVA	MAX. AMPS	MAX. KVA	CW	1-4	4-3
			0-140	10	1.2	13	1.56	CCW	1-4	1-3
				10	1.4	—	—	CW	4-5	4-3
				—	—	—	—	CCW	2-1	1-3

SPEED (SECONDS)	MODEL NUMBER
5	5M1010BCT
15	15M1010BCT
30	30M1010BCT
60	60M1010BCT

UNLESS OTHERWISE SPECIFIED, TOLERANCE IS # DECIMALS .005
 HOLES .002 ANGLES 1° DRAFT 1-1/2°
 MATERIAL: ALL DIMENSIONS APPLY AFTER PLATING

UNITS: IN [mm]

TITLE: SPEC. CONTROL DRAWING
 MOTORIZED VARIABLE XFMR.
 MODEL: M1010BCT

DRAWN BY: S.A. SMITH DATE: 9/22/97
 CHECKER: DATE: WEIGHT APPROX. 16.75 LBS
 ENGINEER: DATE: SCALE 1=1

DO NOT SCALE DWG. CODE IDENT. NO. 83008
 CUSTOMER APPROVAL DATE: DWG. NO. 031-1810

SHEET 1 OF 1

