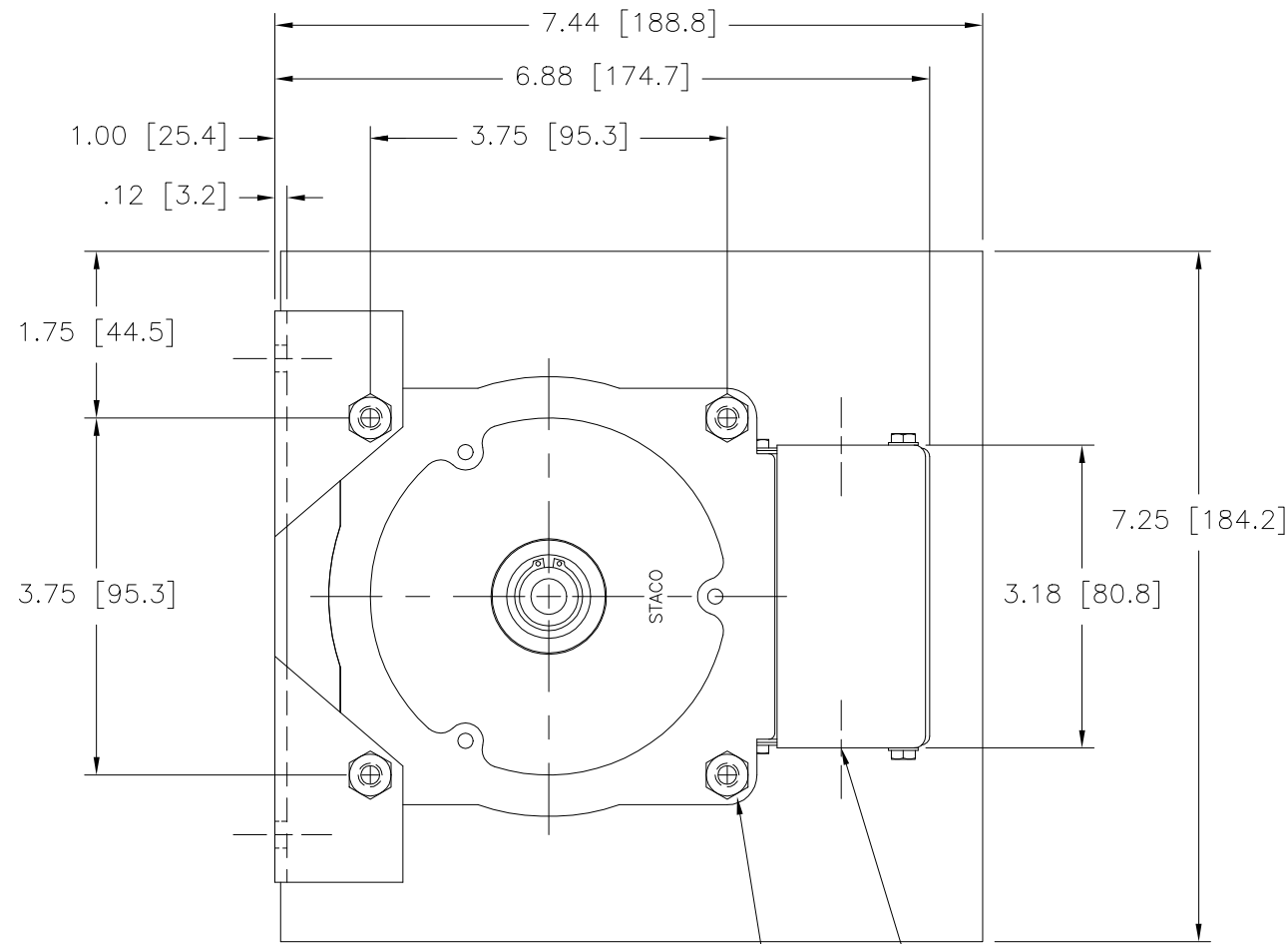
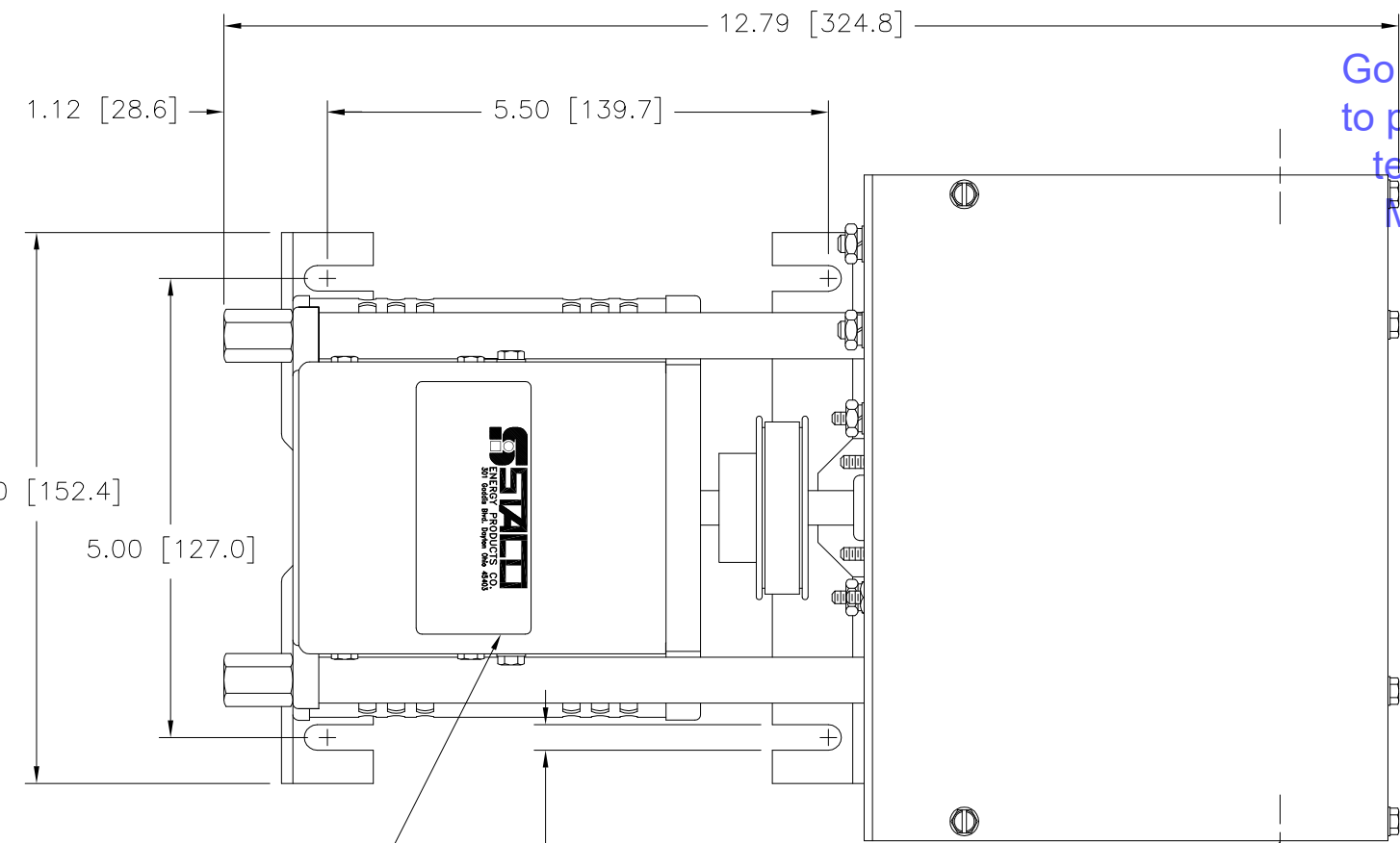


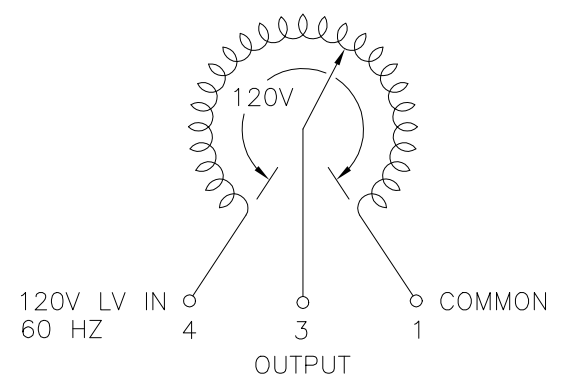
Go to [VARIAC.com](http://VARIAC.com)  
 to purchase and for  
 technical support.  
 Made in the USA



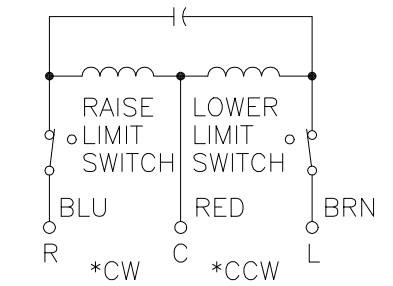
(4) STANDOFFS TAPPED  
 1/4-28 X .38 [9.5] DEEP  
 FOR MOUNTING BOLTS  
 .88 [22.2] DIA. KNOCKOUT  
 (2) PLACES FOR  
 WIRING CONNECTIONS



NAMEPLATE  
 .28 [7.1]  
 (4) PLACES FOR  
 CUSTOMER MOUNTING  
 .88 [22.2] DIA. KNOCKOUT  
 (4) PLACES FOR  
 MOTOR CONNECTIONS



SCHEMATIC  
 VIEW FROM BASE END  
 FUSE RECOMMENDED BUT NOT SUPPLIED



MOTOR CIRCUIT  
 120V, 50/60 HZ  
 \* ROTATION AS VIEWED  
 FROM MOTOR END  
 MOTOR SPEED: SEE CHART

+ MOTOR DRIVEN UNITS USE TERMINAL CONNECTIONS FOR CCW INCREASING VOLTAGE, AS VIEWED FROM BASE END.

| SPECIFICATIONS |       |       |        |                       |                         |  |                                    |                      |        |        |
|----------------|-------|-------|--------|-----------------------|-------------------------|--|------------------------------------|----------------------|--------|--------|
| WIRING         | INPUT |       | OUTPUT |                       |                         |  | SHAFT ROTATION TO INCREASE VOLTAGE | TERMINAL CONNECTIONS |        |        |
|                | VOLTS | HERTZ | VOLTS  | CONSTANT CURRENT LOAD | CONSTANT IMPEDANCE LOAD | FOR INCREASING VOLTAGE AS VIEWED FROM BASE END + |                                    |                      |        |        |
| SINGLE PHASE   | 120   | 60    | 0-120  | MAX. AMPS             | MAX. KVA                | MAX. AMPS  | MAX. KVA                           | INPUT                | JUMPER | OUTPUT |
|                |       |       |        | 12                    | 1.44                    | 15   | 1.80                               | CW                   | 1-4    | 4-3    |
|                |       |       |        |                       |                         | CCW  | 1-4                                | 1-3                  |        |        |

| SPEED (SECONDS) | MODEL NUMBER |
|-----------------|--------------|
| 5               | 5M1210BCT    |
| 15              | 15M1210BCT   |
| 30              | 30M1210BCT   |
| 60              | 60M1210BCT   |

UNLESS OTHERWISE SPECIFIED, TOLERANCE IS # DECIMALS HOLES .002 ANGLES 1° DRAFT 1-1/2° UNITS IN [mm]

MATERIAL: ALL DIMENSIONS APPLY AFTER PLATING

THE INFORMATION AND DESIGN DISCLOSED HEREIN WAS ORIGINATED BY AND IS THE PROPERTY OF STACO ENERGY PRODUCTS CO., WHICH RESERVES ALL PATENT, PROPRIETARY, DESIGN, MANUFACTURING, REPRODUCTION, USE AND SALE RIGHTS THEREIN, AND TO ANY ARTICLE DISCLOSED THEREIN EXCEPT TO THE EXTENT RIGHTS ARE EXPRESSLY GRANTED TO OTHERS. THE FOREGOING DOES NOT APPLY TO VENDOR PROPRIETARY PARTS.

WEIGHT APPROX. 16.75 LBS  
 CODE IDENT. NO. 83008  
 SCALE 1=1 SHEET 1 OF 1

STACO ENERGY PRODUCTS CO.  
 A COMPONENTS CORPORATION OF AMERICA COMPANY  
 DAYTON, OHIO U.S.A.

DRAWN BY S.A. SMITH DATE 9/25/97  
 CHECKER DATE  
 ENGINEER DATE

DO NOT SCALE DWG.  
 CUSTOMER APPROVAL DATE

DATE 9/25/97  
 DWG. NO. 031-3160