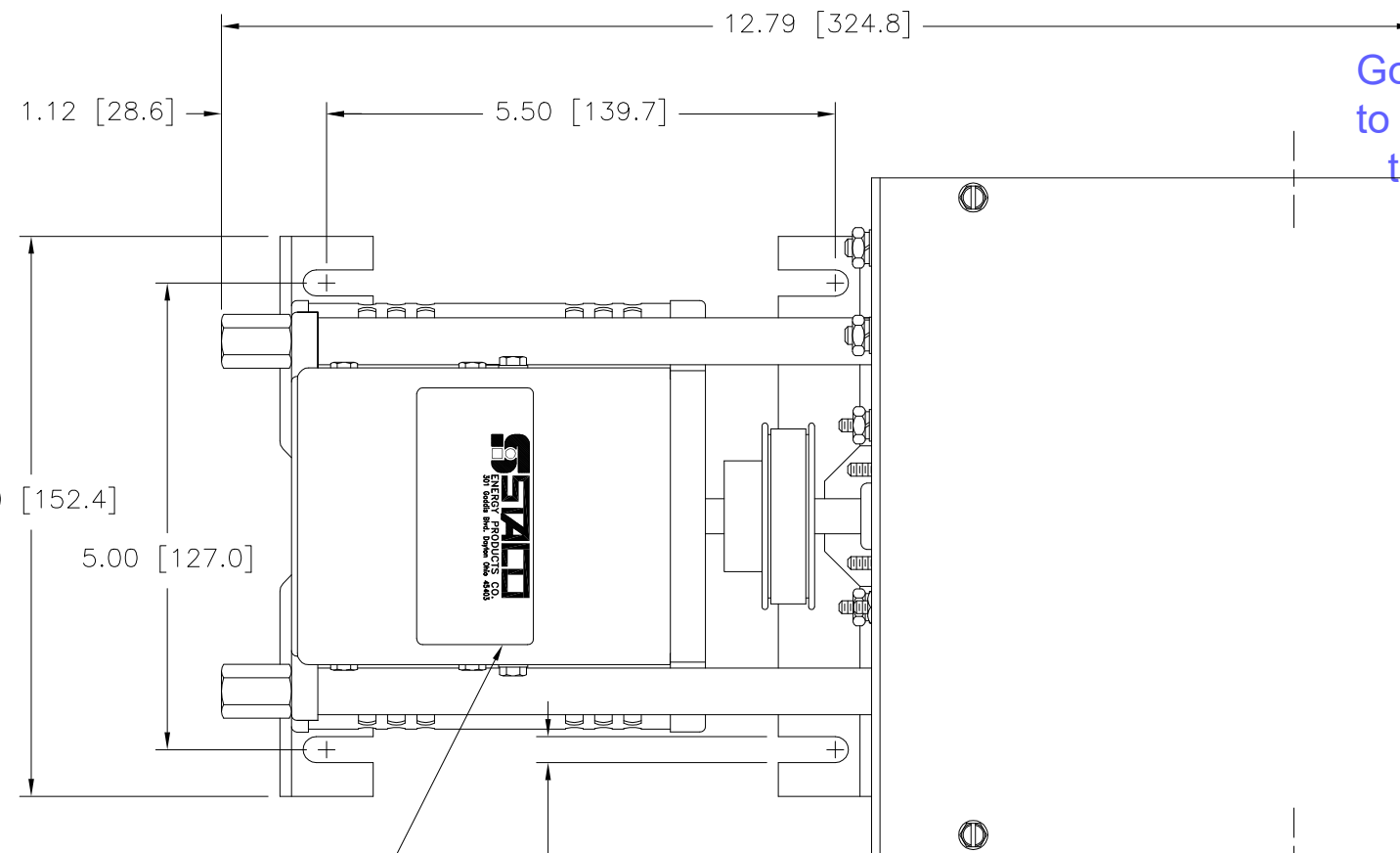


(4) STANDOFFS TAPPED
 1/4-28 X .38 [9.5] DEEP
 FOR MOUNTING BOLTS

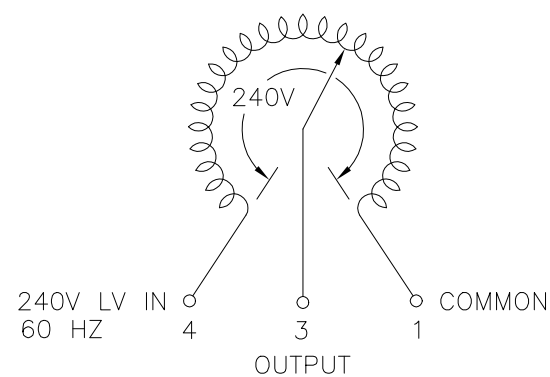
.88 [22.2] DIA. KNOCKOUT
 (2) PLACES FOR
 WIRING CONNECTIONS



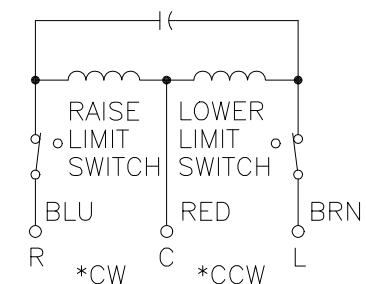
NAMEPLATE
 .28 [7.1]
 (4) PLACES FOR
 CUSTOMER MOUNTING

.88 [22.2] DIA. KNOCKOUT
 (4) PLACES FOR
 MOTOR CONNECTIONS

Go to VARIAC.com
 to purchase and for
 technical support.
 Made in the USA



SCHEMATIC
 VIEW FROM BASE END
 FUSE RECOMMENDED BUT NOT SUPPLIED



MOTOR CIRCUIT
 120V, 50/60 HZ
 * ROTATION AS VIEWED
 FROM MOTOR END
 MOTOR SPEED: SEE CHART

+ MOTOR DRIVEN UNITS USE TERMINAL CONNECTIONS FOR CCW INCREASING VOLTAGE, AS VIEWED FROM BASE END.

WIRING	SPECIFICATIONS								TERMINAL CONNECTIONS		
	INPUT		OUTPUT				SHAFT ROTATION TO INCREASE VOLTAGE	FOR INCREASING VOLTAGE AS VIEWED FROM BASE END +			
	VOLTS	HERTZ	VOLTS	CONSTANT CURRENT LOAD	CONSTANT IMPEDANCE LOAD	INPUT		JUMPER	OUTPUT		
SINGLE PHASE	240	60	0-240	MAX. AMPS	MAX. KVA	MAX. AMPS	MAX. KVA	CW	1-4	4-3	
				5.0	1.20	7.0	1.68	CCW	1-4	1-3	

SPEED (SECONDS)	MODEL NUMBER
5	5M1220BCT
15	15M1220BCT
30	30M1220BCT
60	60M1220BCT

UNLESS OTHERWISE SPECIFIED, TOLERANCE IS # DECIMALS HOLES .002 ANGLES 1° DRAFT 1-1/2° UNITS IN [mm]

MATERIAL: ALL DIMENSIONS APPLY AFTER PLATING

THE INFORMATION AND DESIGN DISCLOSED HEREIN WAS ORIGINATED BY AND IS THE PROPERTY OF STACO ENERGY PRODUCTS CO., WHICH RESERVES ALL PATENT, PROPRIETARY, DESIGN, MANUFACTURING, REPRODUCTION, USE AND SALE RIGHTS THEREIN, AND TO ANY ARTICLE DISCLOSED THEREIN EXCEPT TO THE EXTENT RIGHTS ARE EXPRESSLY GRANTED TO OTHERS. THE FOREGOING DOES NOT APPLY TO VENDOR PROPRIETARY PARTS.

WEIGHT APPROX. 16.75 LBS
 CODE IDENT. NO. 83008
 SCALE 1=1 SHEET 1 OF 1

DATE 9/26/97
 DRAWN BY S.A. SMITH
 CHECKER
 ENGINEER

DATE
 CUSTOMER APPROVAL
 DATE

DO NOT SCALE DWG.
 CUSTOMER APPROVAL
 DATE

DWG. NO. 031-3460

