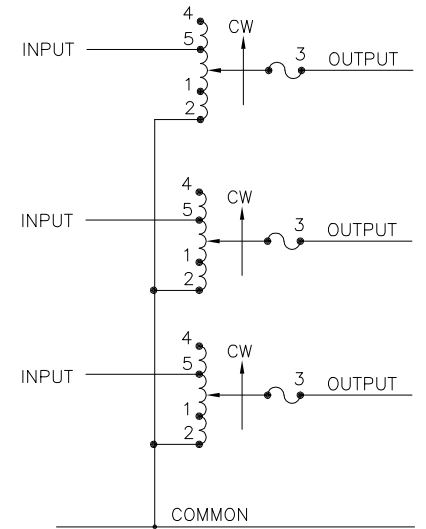
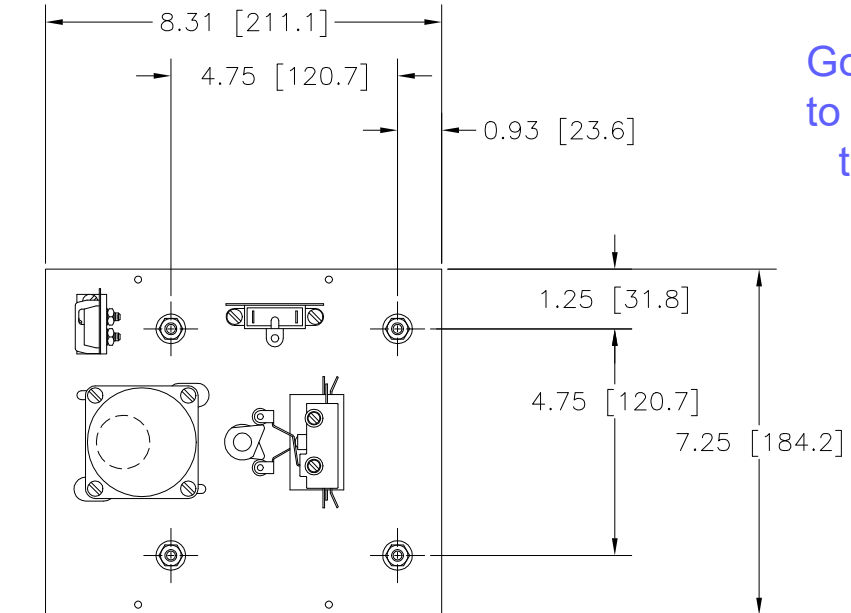
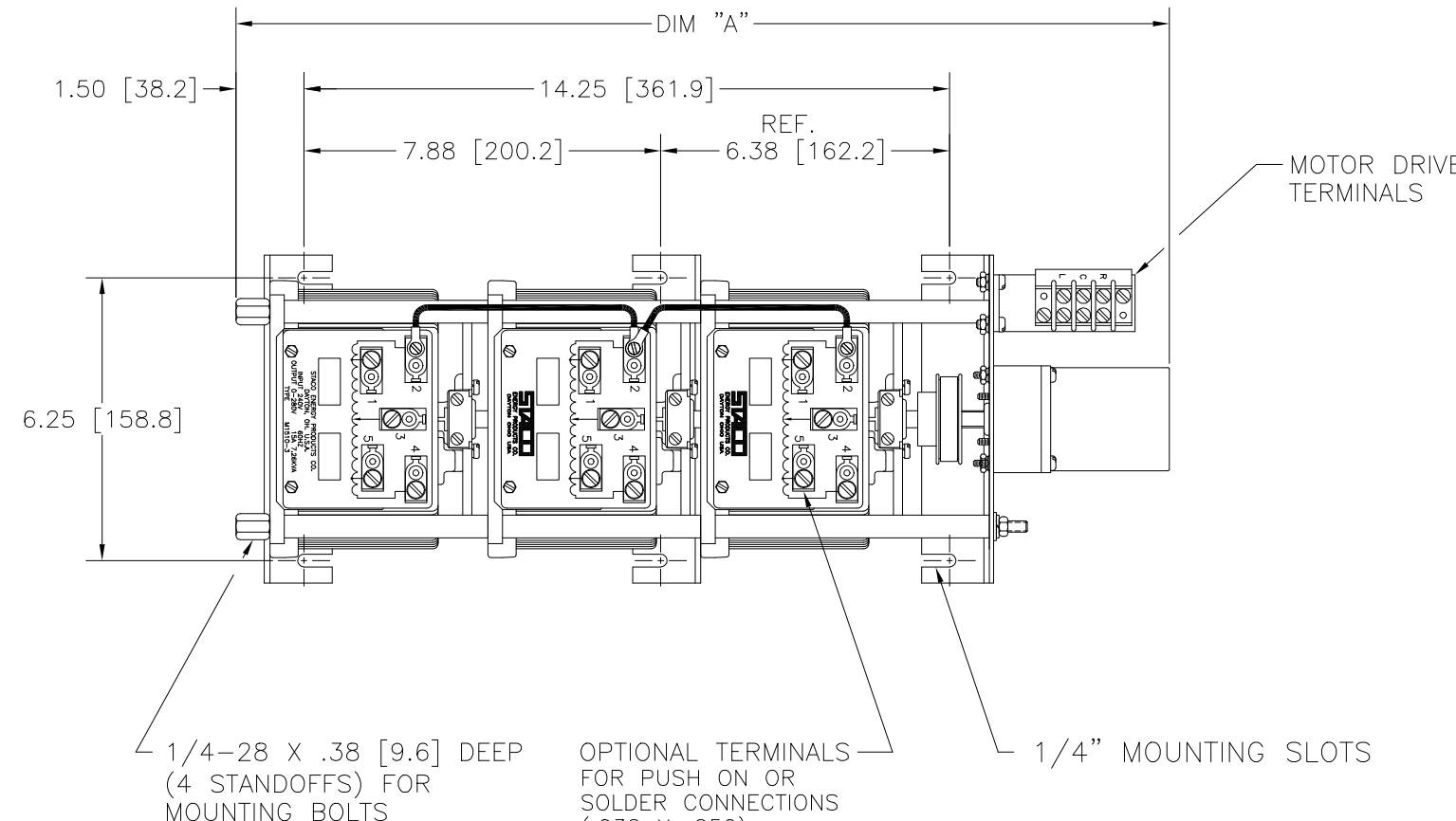
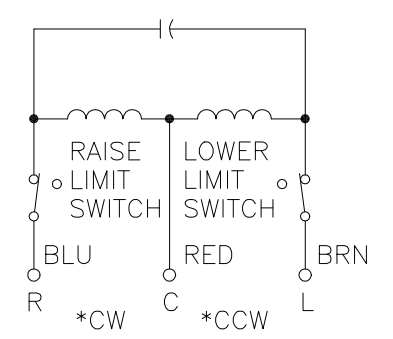


Go to [VARIAC.com](http://VARIAC.com)  
 to purchase and for  
 technical support.  
 Made in the USA



NOTE:  
 FUSE RECOMMENDED BUT NOT SUPPLIED



MOTOR CIRCUIT

120V, 50/60 HZ

\* ROTATION AS VIEWED FROM MOTOR END

MOTOR SPEED: SEE CHART

- ⚡ IF GANGED UNITS ARE USED IN A SYSTEM THAT ORDINARILY HAS A COMMON NEUTRAL OR GROUND BETWEEN SOURCE AND LOAD, THE NEUTRAL OR GROUND MUST BE CONNECTED TO THE COMMON TERMINALS OF THE VARIABLE TRANSFORMER ASSEMBLY. IF THE SYSTEM HAS NO NEUTRAL, THE LOAD MUST BE BALANCED OR THE TRANSFORMERS WILL BE DAMAGED.
- JUMPER PROVIDED IN THE STANDARD COMMON POSITION AND SHOULD BE MOVED OR REMOVED AS REQUIRED.

++ LINE TO LINE VOLTAGE

| SPECIFICATIONS    |        |       |        |                       |                         |  |                                    |                      |        |        |
|-------------------|--------|-------|--------|-----------------------|-------------------------|--|------------------------------------|----------------------|--------|--------|
| WIRING            | INPUT  |       | OUTPUT |                       |                         |  | SHAFT ROTATION TO INCREASE VOLTAGE | TERMINAL CONNECTIONS |        |        |
|                   | VOLTS  | HERTZ | VOLTS  | CONSTANT CURRENT LOAD | CONSTANT IMPEDANCE LOAD | FOR INCREASING VOLTAGE AS VIEWED FROM BASE END |                                    |                      |        |        |
| THREE PHASE WYE ⚡ | 240 ++ | 50/60 | 0-240  | MAX. AMPS             | MAX. KVA                | MAX. AMPS                                      | MAX. KVA                           | INPUT                | JUMPER | OUTPUT |
|                   |        |       |        | 15                    | 6.22                    | 20   | 8.30                               | CW                   | 4-4-4  | 3-3-3  |
|                   |        | 60    | 0-280  | 15                    | 7.26                    | —  | —                                  | CCW                  | 4-4-4  | 3-3-3  |
|                   |        |       |        |                       |                         |  |                                    | CW                   | 1-1-1  | 4-4-4  |
|                   |        |       |        |                       |                         | CCW  | 5-5-5                              | 2-2-2                | 3-3-3  |        |

| MODEL NO. | SPEED (SECONDS) | DIM. "A"      |
|-----------|-----------------|---------------|
| 5M1510-3  | 5               | 20.38 [517.6] |
| 15M1510-3 | 15              | 20.38 [517.6] |
| 30M1510-3 | 30              | 20.75 [527.1] |
| 60M1510-3 | 60              | 20.75 [527.1] |

UNLESS OTHERWISE SPECIFIED, TOLERANCE IS # DECIMALS HOLES .002 ANGLES 1° DRAFT 1-1/2°

UNITS IN [mm]

MATERIAL: ALL DIMENSIONS APPLY AFTER PLATING

DATE: 11/23/98

WEIGHT APPROX. 65.75 LBS.

SCALE .5=1

SHEET 1 OF 1

DWG. NO. 031-3769

STACO ENERGY PRODUCTS CO. A COMPONENTS CORPORATION OF AMERICA COMPANY DAYTON, OHIO U.S.A.