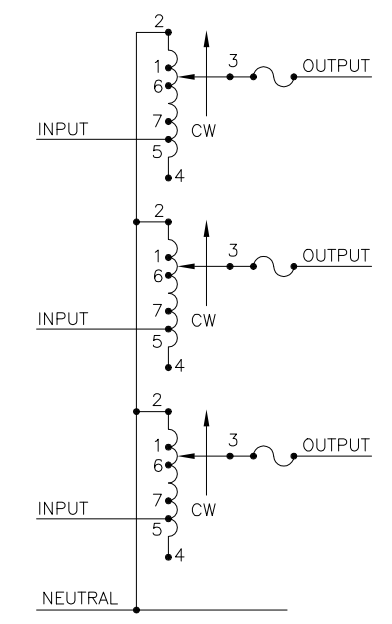
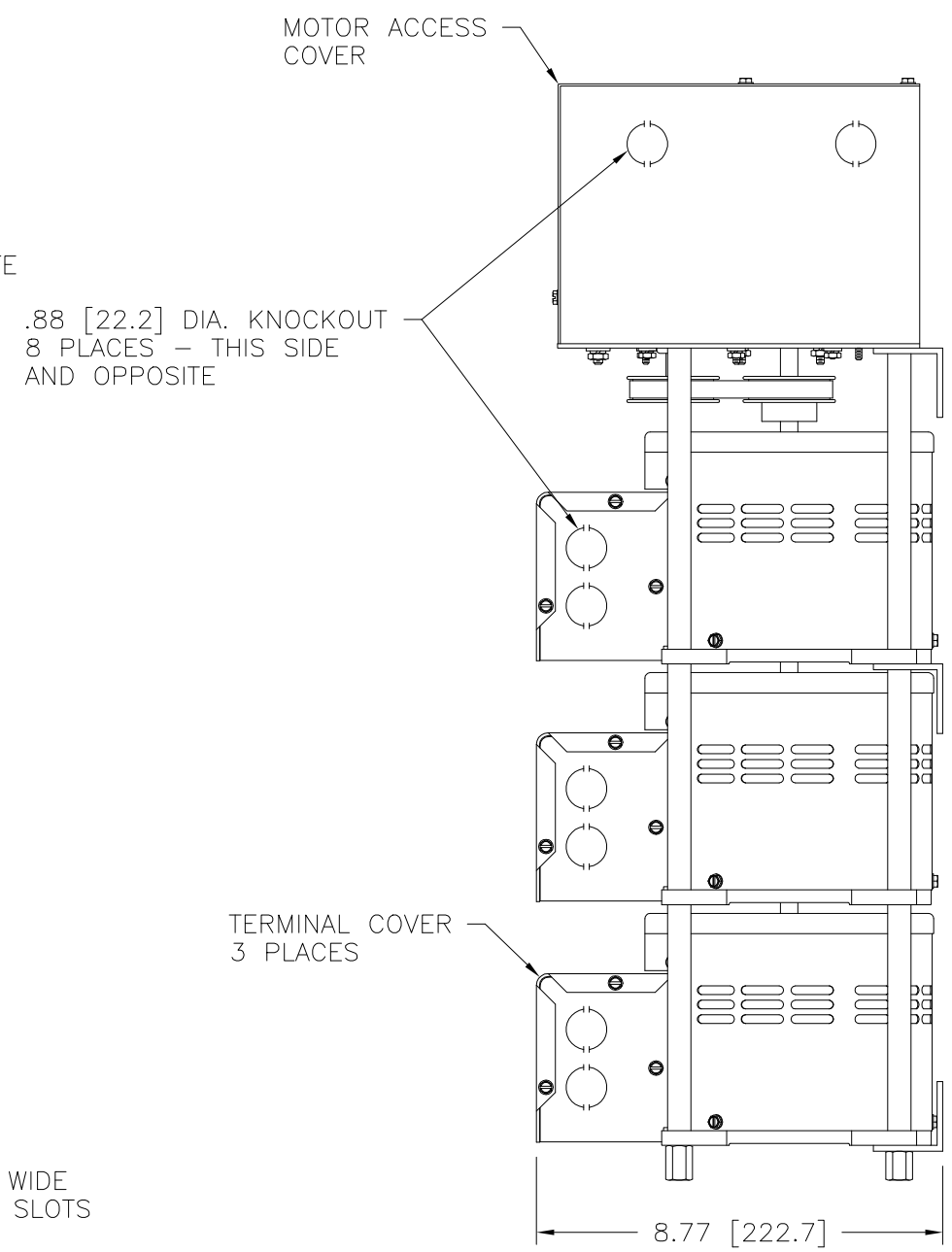
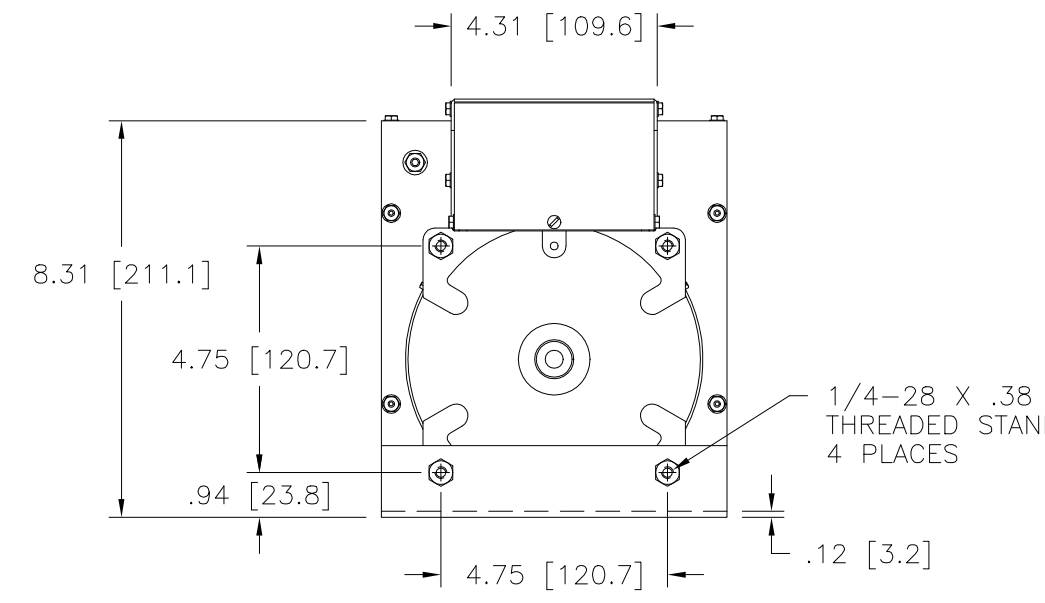
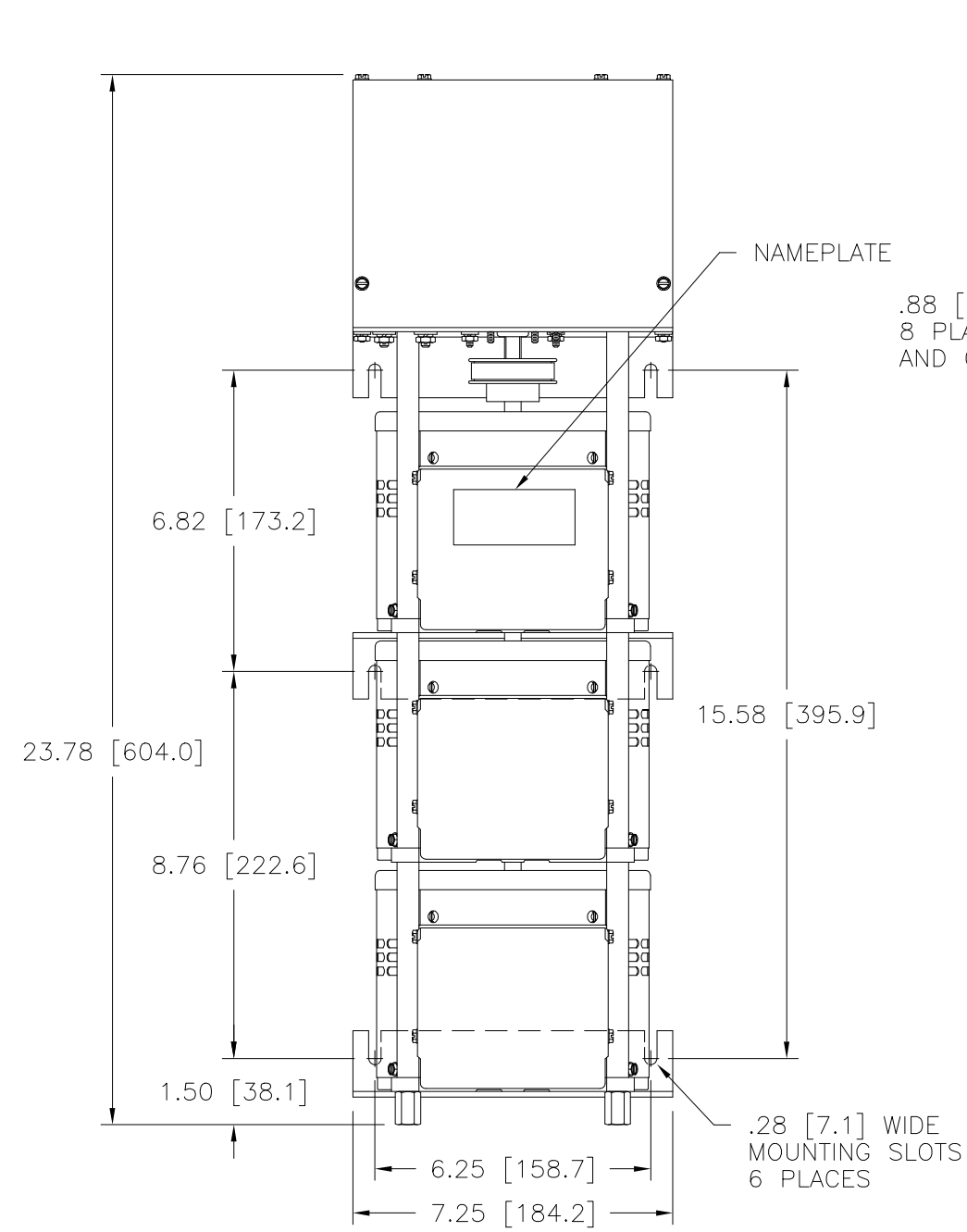


Go to VARIAC.com
 to purchase and for
 technical support.
 Made in the USA



SCHEMATIC
 THREE PHASE WYE
 FUSES RECOMMENDED BUT NOT SUPPLIED

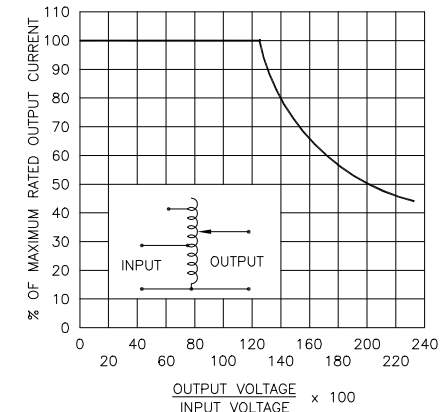
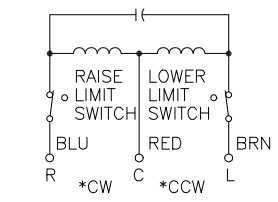


FIGURE A
 MAXIMUM OUTPUT CURRENT OF ANY
 DUAL INPUT VOLTAGE OR VOLTAGE DOUBLER
 UNIT OPERATED AT LOWER INPUT VOLTAGE.



MOTOR CIRCUIT
 120V, 50/60 HZ
 * ROTATION AS VIEWED
 FROM MOTOR END
 MOTOR SPEED: SEE CHART

| SPEED (SECONDS) | MODEL NUMBER |
|-----------------|--------------|
| 5 | 5M1520CT-3 |
| 15 | 15M1520CT-3 |
| 30 | 30M1520CT-3 |
| 60 | 60M1520CT-3 |

| SPECIFICATIONS | | | | | | | | | | | |
|-------------------|--------|-------|--------|------------------------------------|-------------------------------------|-----------|------------------------------------|------------------------|--|-------|-------|
| WIRING | INPUT | | OUTPUT | | | | SHAFT ROTATION TO INCREASE VOLTAGE | TERMINAL CONNECTIONS + | | | |
| | VOLTS | HERTZ | VOLTS | CONSTANT CURRENT LOAD MAX. AMPS | CONSTANT IMPEDANCE LOAD MAX. KVA | MAX. AMPS | | MAX. KVA | FOR INCREASING VOLTAGE AS VIEWED FROM BASE END ■ | | |
| THREE PHASE WYE Π | 480 ++ | 50/60 | 0-480 | 9.5 | 7.90 | 12 | 10 | CW | 2-2-2 | 4-4-4 | 3-3-3 |
| | | | 0-560 | 9.5 | 9.21 | — | — | CCW | 4-4-4 | 2-2-2 | 3-3-3 |
| | 240 ++ | 60 | 0-560 | 9.5# | 3.96§ | — | — | CW | 1-1-1 | 4-4-4 | 3-3-3 |
| | | | 0-560 | 9.5# | 3.96§ | — | — | CCW | 5-5-5 | 2-2-2 | 3-3-3 |
| | | | | | | | | | | | |

MAXIMUM OUTPUT CURRENT IN OUTPUT VOLTAGE RANGE FROM 0 TO 25% ABOVE LINE VOLTAGE. AT HIGHER OUTPUT VOLTAGES, THE OUTPUT CURRENT MUST BE REDUCED ACCORDING TO THE DERATING CURVE FIGURE A.
 § MAXIMUM KVA AT MAXIMUM OUTPUT VOLTAGE AND CORRESPONDING DERATED OUTPUT CURRENT. MAXIMUM KVA FOR LOWER VOLTAGES MAY BE CALCULATED FROM DERATING CURVE FIGURE A.
 ++ LINE TO LINE VOLTAGE.
 ¶ IF GANGED UNITS ARE USED IN A SYSTEM THAT ORDINARILY HAS A COMMON NEUTRAL OR GROUND BETWEEN SOURCE AND LOAD, THE NEUTRAL OR GROUND MUST BE CONNECTED TO THE COMMON TERMINALS OF THE VARIABLE TRANSFORMER ASSEMBLY. IF THE SYSTEM HAS NO NEUTRAL, THE LOAD MUST BE BALANCED OR THE TRANSFORMER WILL BE DAMAGED.
 ■ JUMPER PROVIDED IN STANDARD COMMON POSITION AND SHOULD BE MOVED OR REMOVED AS REQUIRED.
 + MOTOR DRIVEN UNITS USE TERMINAL CONNECTIONS FOR CCW INCREASING VOLTAGE, AS VIEWED FROM THE BASE END.

UNLESS OTHERWISE SPECIFIED, TOLERANCE IS * DECIMALS .06 HOLES .01 ANGLES 1° DRAFT 1-1/2° UNITS IN [mm]

MATERIAL: ALL DIMENSIONS APPLY AFTER PLATING

TITLE: SPEC. CONTROL DRAWING VARIABLE TRANSFORMER MODEL: M1520CT-3

STACO ENERGY PRODUCTS CO. A COMPONENTS CORPORATION OF AMERICA COMPANY DAYTON, OHIO U.S.A.

DRAWN BY: S.A. SMITH DATE: 2/4/98 FIRST USED ON: DO NOT SCALE DWG. CUSTOMER APPROVAL: DATE:

CHECKER: DATE: WEIGHT APPROX. 76.5 LBS CODE IDENT. NO. 83008 DWG. NO. 031-4165

ENGINEER: DATE: SCALE .50=1 SHEET 1 OF 1