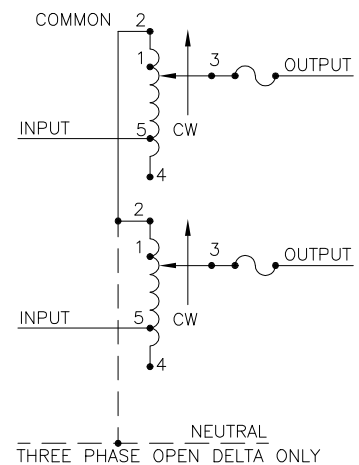
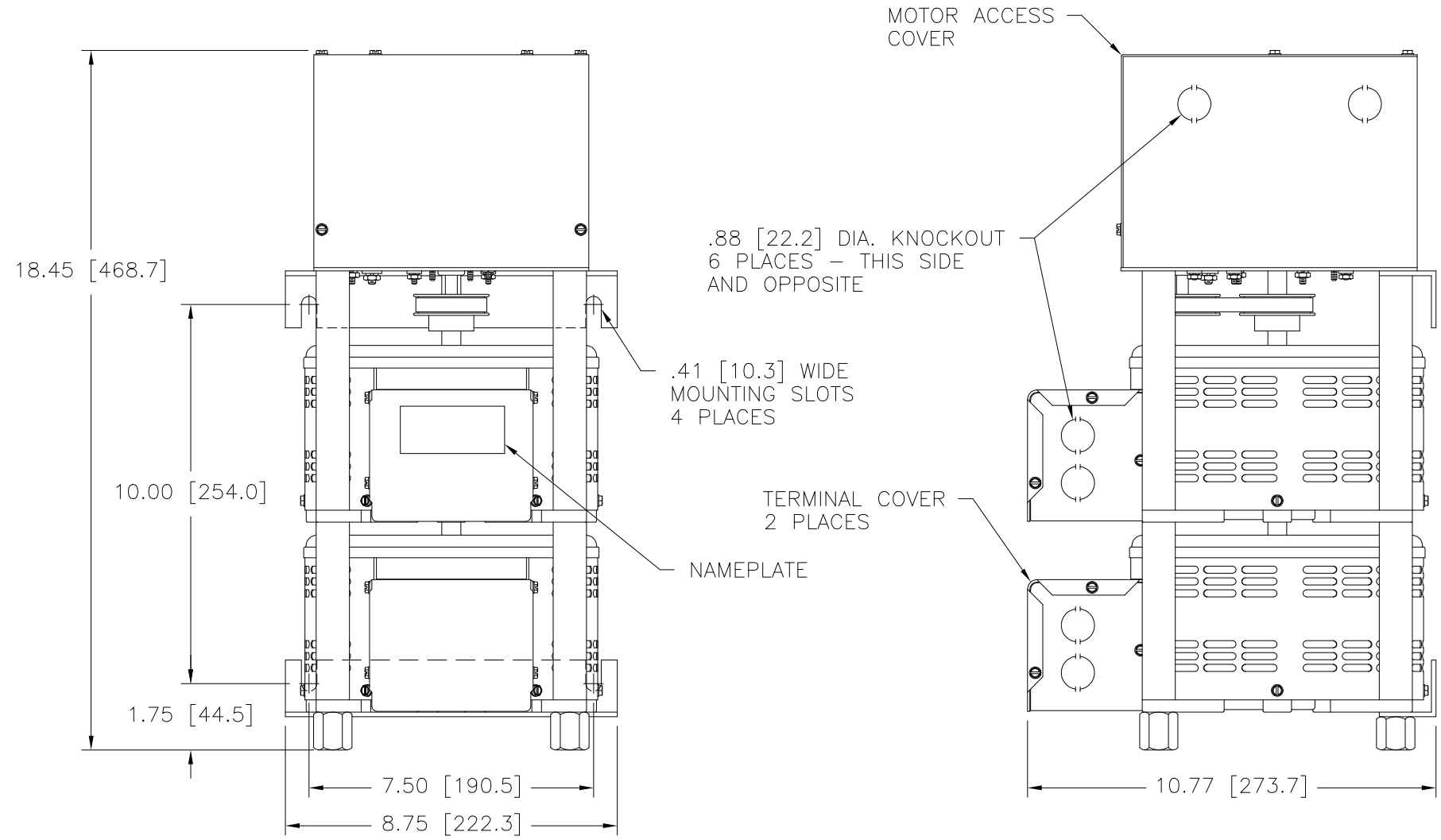
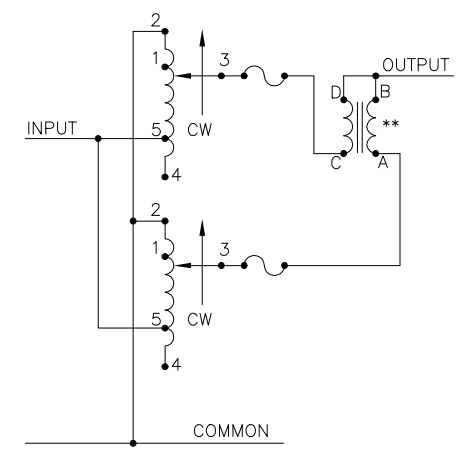


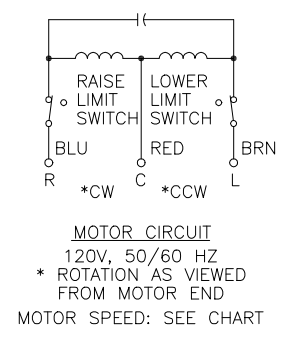
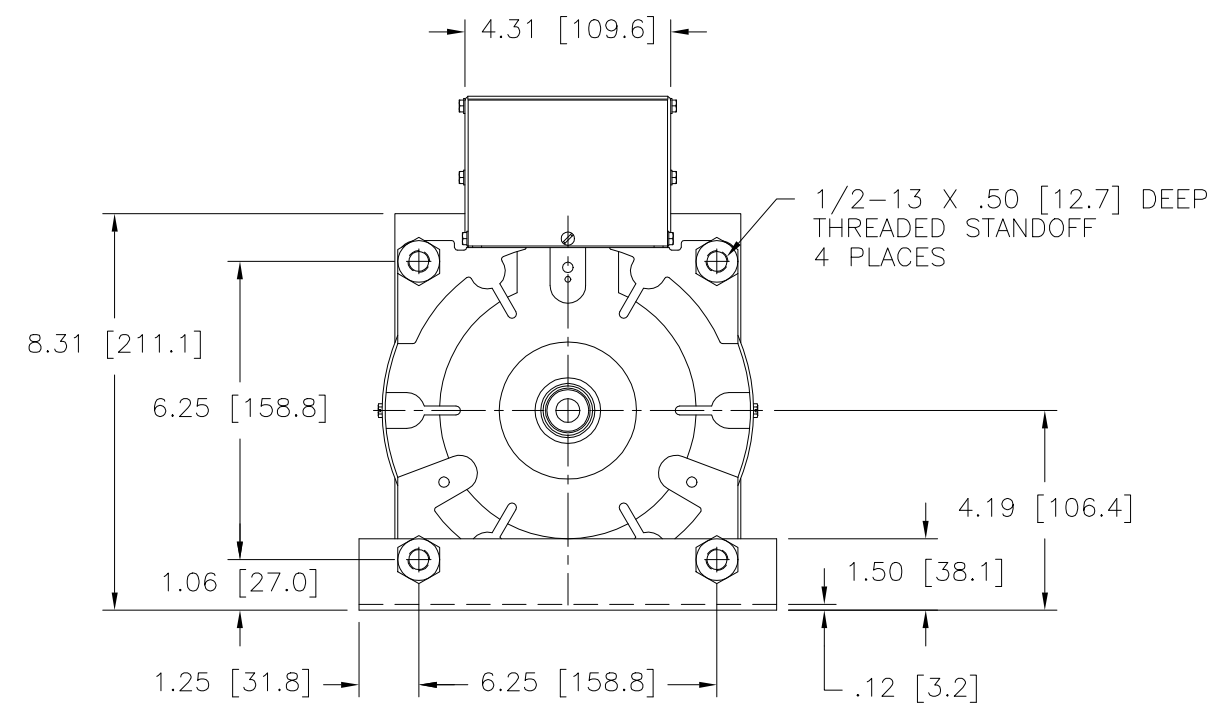
Go to [VARIAC.com](http://VARIAC.com)  
 to purchase and for  
 technical support.  
 Made in the USA



SCHEMATIC  
 THREE PHASE OPEN DELTA AND SINGLE  
 PHASE SERIES. FUSE RECOMMENDED BUT  
 NOT SUPPLIED



SCHEMATIC  
 SINGLE PHASE PARALLEL  
 FUSE RECOMMENDED BUT NOT SUPPLIED



++ LINE TO LINE VOLTAGE.  
 \*\* REQUIRES ONE 51LAC PARALLELING CHOKE (NOT SUPPLIED).  
 ¶ IF GANGED UNITS ARE USED IN A SYSTEM THAT ORDINARILY HAS A COMMON NEUTRAL OR GROUND BETWEEN SOURCE AND LOAD, THE NEUTRAL OR GROUND MUST BE CONNECTED TO THE COMMON TERMINALS OF THE VARIABLE TRANSFORMER ASSEMBLY. IF THE SYSTEM HAS NO NEUTRAL, THE LOAD MUST BE BALANCED OR THE TRANSFORMER WILL BE DAMAGED.  
 ■ JUMPER PROVIDED IN STANDARD COMMON POSITION AND SHOULD BE MOVED OR REMOVED AS REQUIRED.  
 + MOTOR DRIVEN UNITS USE TERMINAL CONNECTIONS FOR CCW INCREASING VOLTAGE, AS VIEWED FROM THE BASE END.

SPEED (SECONDS)	MODEL NUMBER
5	5M2510CT-2
15	15M25120CT-2
30	30M2510CT-2
60	60M2510CT-2

SPECIFICATIONS											
WIRING	INPUT		OUTPUT				SHAFT ROTATION TO INCREASE VOLTAGE	TERMINAL CONNECTIONS +			
	VOLTS	HERTZ	VOLTS	CONSTANT CURRENT LOAD MAX. AMPS	CONSTANT IMPEDANCE LOAD MAX. KVA	MAX. AMPS		MAX. KVA	MOTOR DRIVEN UNITS USE CCW FOR INCREASING VOLTAGE AS VIEWED FROM BASE END ■		
SINGLE PHASE PARALLEL **	120	50/60	0-120	50	6.00	60	7.2	CW	2-2,4-4	---	4-B
			0-140	50	7.00	---	---	CCW	2-2,4-4	---	2-B
SINGLE PHASE SERIES	240	50/60	0-240	25	6.00	30	7.2	CW	1-1,4-4	---	4-B
			0-280	25	7.00	---	---	CCW	5-5,2-2	---	2-B
			0-240	25	6.00	30	7.2	CW	2-2	4-4	3-3
			0-280	25	7.00	---	---	CCW	4-4	2-2	3-3
THREE PHASE OPEN DELTA ¶	120	50/60	0-120	25	5.20	30	6.20	CW	1-1	4-4	3-3
			0-140	25	6.06	---	---	CCW	5-5	2-2	3-3
			0-120	25	5.20	30	6.20	CW	2-4-2	4-4	3-4-3
			0-140	25	6.06	---	---	CCW	4-2-4	2-2	3-2-3
0-140	25	6.06	---	---	CW	1-4-1	4-4	3-4-3			
0-140	25	6.06	---	---	CCW	5-2-5	2-2	3-2-3			

UNLESS OTHERWISE SPECIFIED, TOLERANCE IS ±  
 DECIMALS HOLES .01 ANGLES DRAFT 1°  
 XX .0005 .0005 .01 1°

MATERIAL: ALL DIMENSIONS APPLY AFTER PLATING

UNITS IN [mm]

TITLE: SPEC. CONTROL DRAWING  
 VARIABLE TRANSFORMER  
 MODEL: M2510CT-2

STACO ENERGY PRODUCTS CO.  
 A COMPONENTS CORPORATION OF AMERICA COMPANY  
 DAYTON, OHIO U.S.A.

DRAWN BY S.A. SMITH DATE 1/4/2001 FIRST USED ON DO NOT SCALE DWG. CUSTOMER APPROVAL DATE

CHECKER DATE WEIGHT APPROX. 60 LBS CODE IDENT. NO. 83008 DWG. SIZE D 031-5293

ENGINEER DATE SCALE 1/2 SHEET 1 OF 1