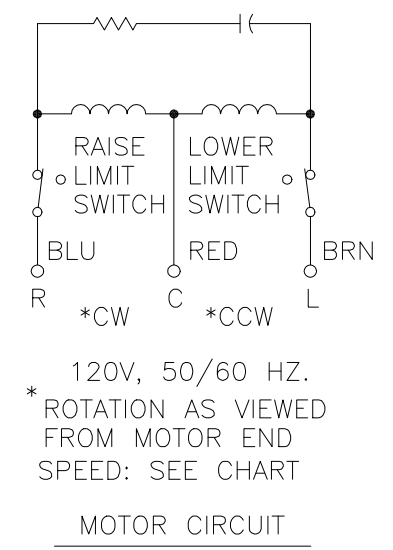
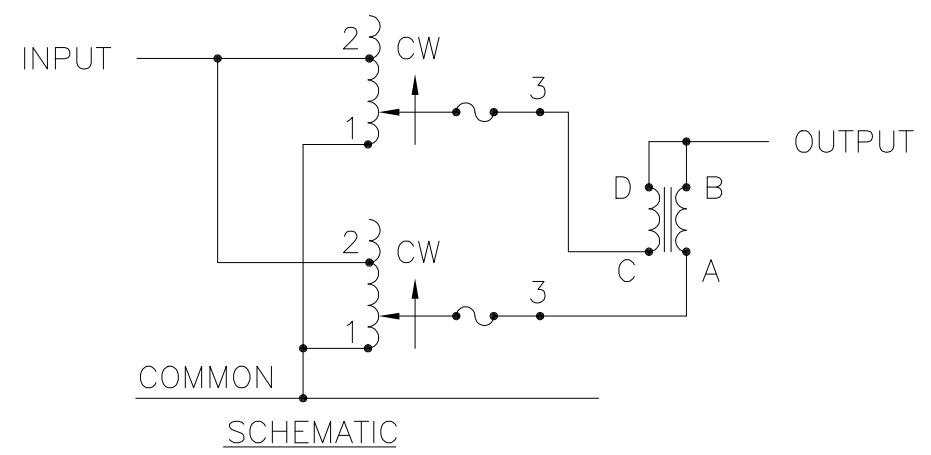
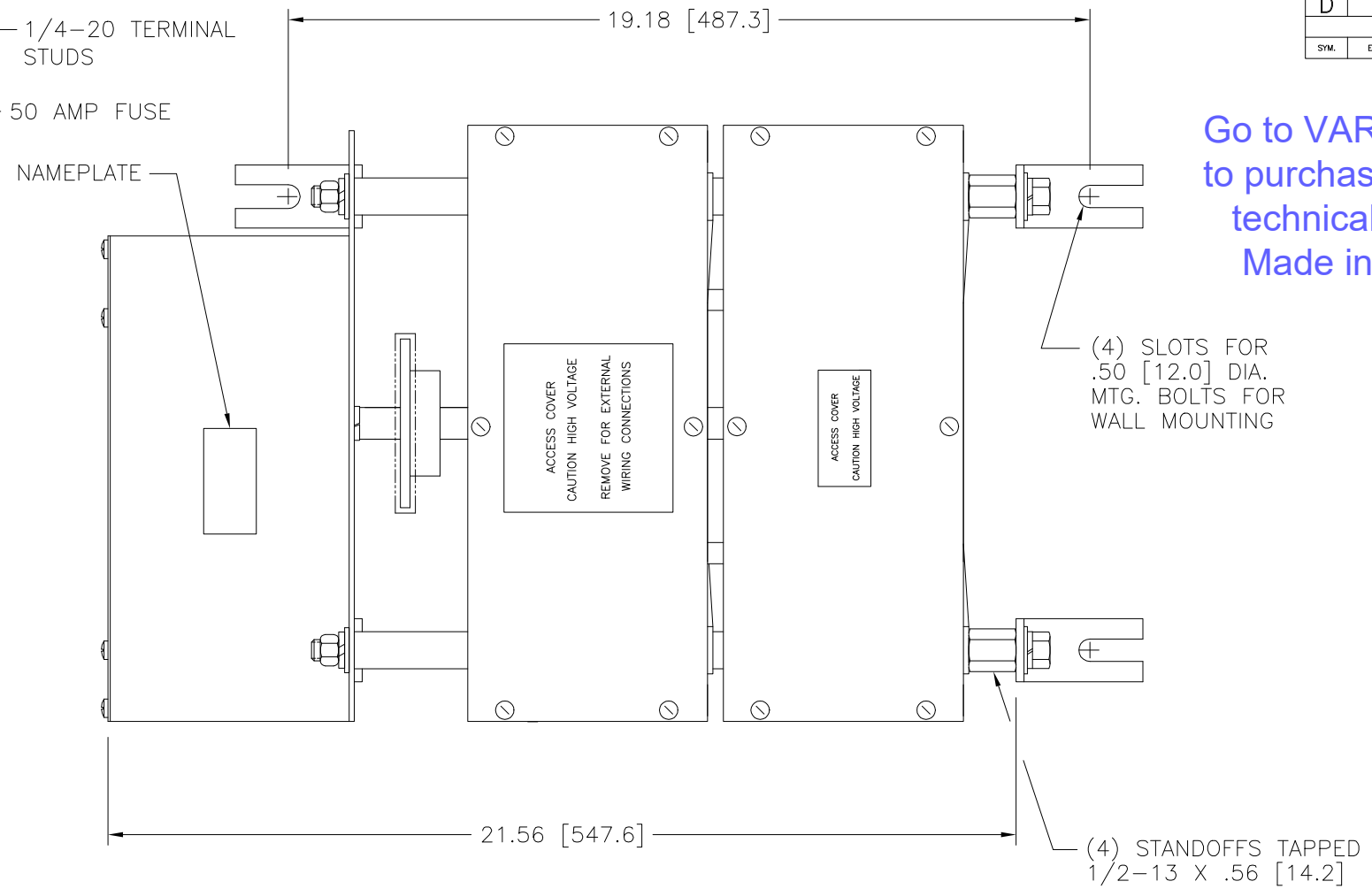
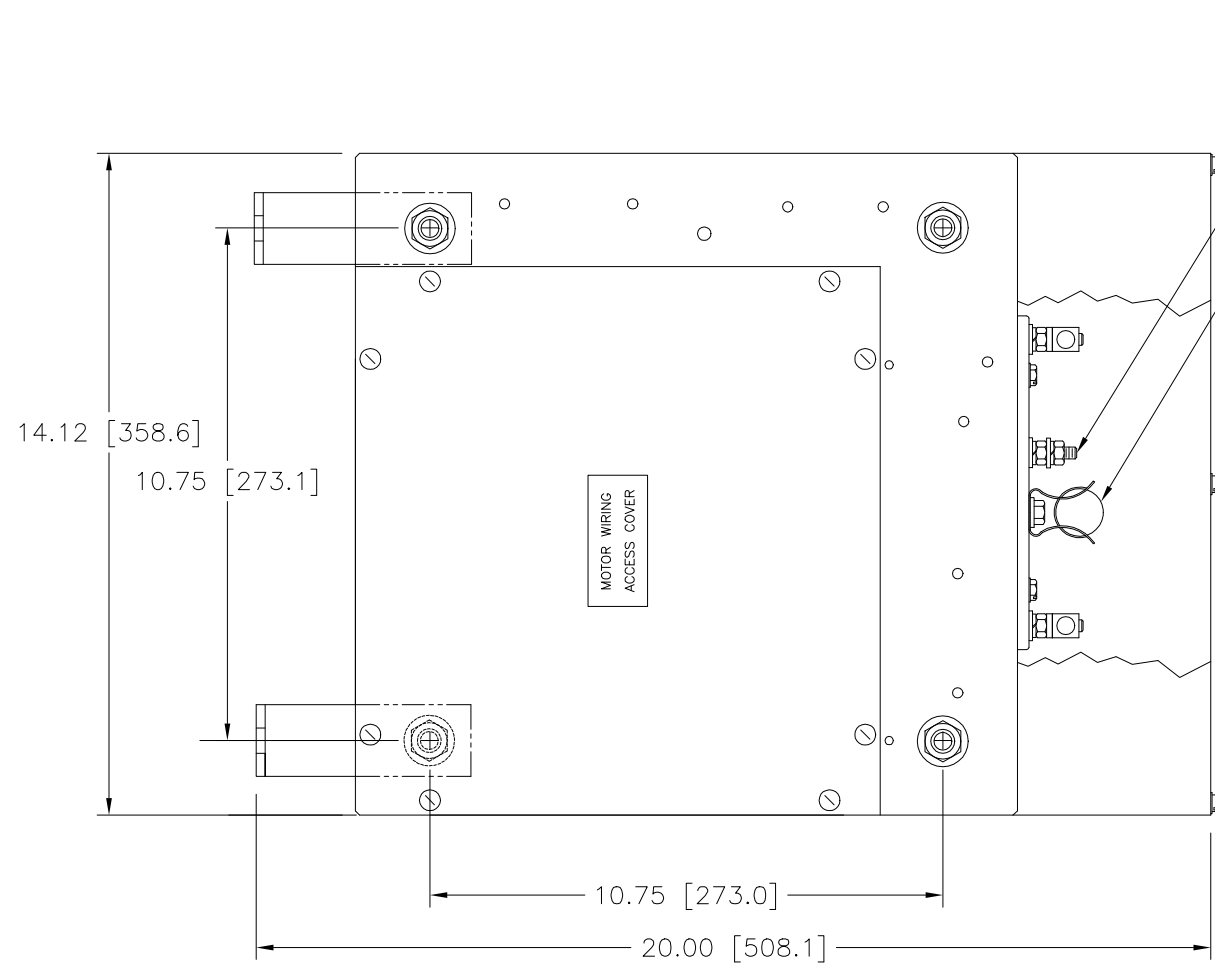


Go to [VARIAC.com](http://VARIAC.com)  
 to purchase and for  
 technical support.  
 Made in the USA



SPEED (SECONDS)	MODEL NUMBER
5	5M5011CT-2P
15	15M5011CT-2P
30	30M5011CT-2P
60	60M5011CT-2P

SPECIFICATIONS									
WIRING	INPUT		OUTPUT			SHAFT ROTATION TO INCREASE VOLTAGE	TERMINAL CONNECTIONS		
	VOLTS	HERTZ	VOLTS	MAX. AMPS	MAX. KVA		FOR INCREASING VOLTAGE AS VIEWED FROM ROTOR END		
SINGLE PHASE PARALLEL	120	50/60	0-140	100	14.0	CW	INPUT	JUMPER	OUTPUT
							1-2	---	1-B

UNLESS OTHERWISE SPECIFIED, TOLERANCE IS # DECIMALS .XX .004 .002 .005 HOLES ANGLES DRAFT 1° 1-1/2° UNITS IN [mm] TITLE: SPEC. CONTROL DRAWING VARIABLE MOTORIZED XFMR. TYPE: M5011CT-2P

MATERIAL: ALL DIMENSIONS APPLY AFTER PLATING

DATE: 2/11/00  
 DRAWN BY: RAU  
 CHECKER: DATE  
 ENGINEER: DATE

FIRST USED ON: DO NOT SCALE DWG.  
 WEIGHT APPROX. CODE IDENT. NO. 83008  
 SCALE: .5=1 SHEET 1 OF 1

CUSTOMER APPROVAL: DATE

DWG. NO. 031-6224

STACO ENERGY PRODUCTS CO. DAYTON, OHIO U.S.A.