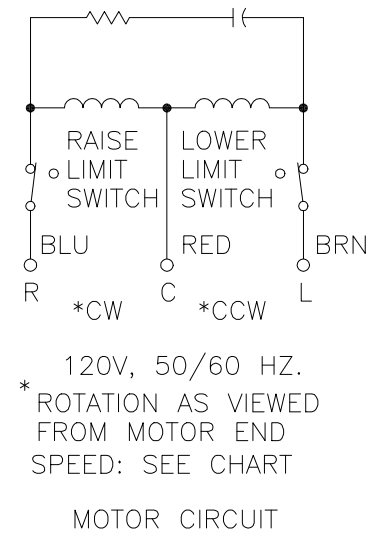
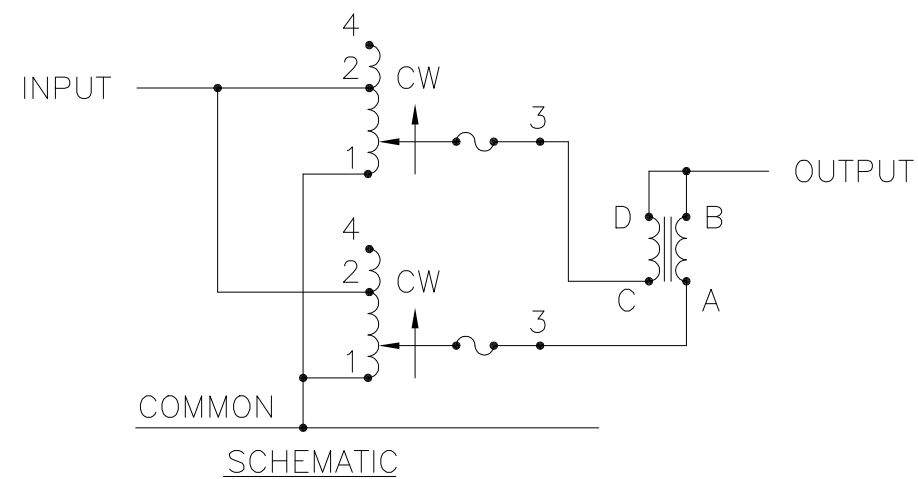
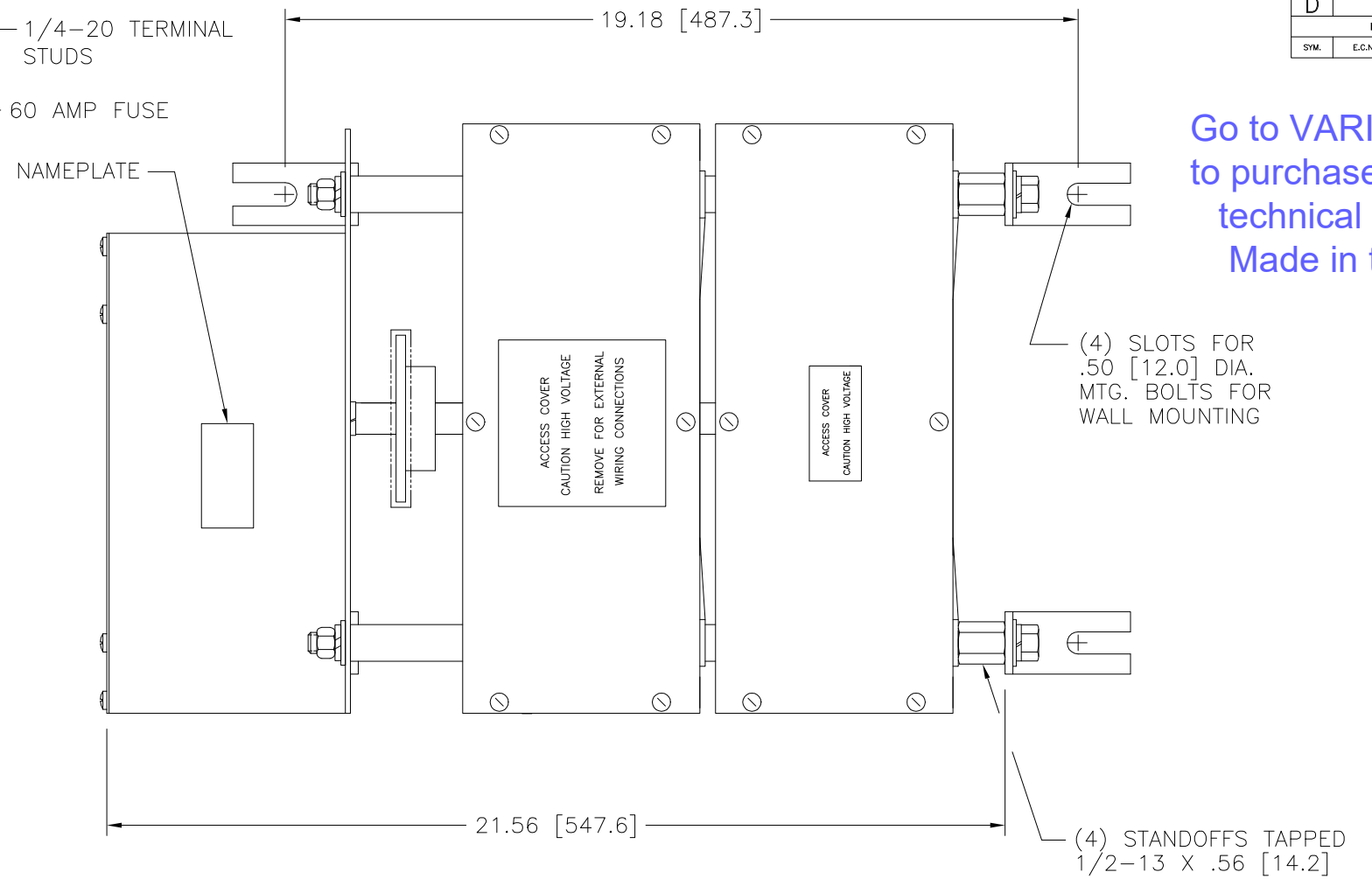
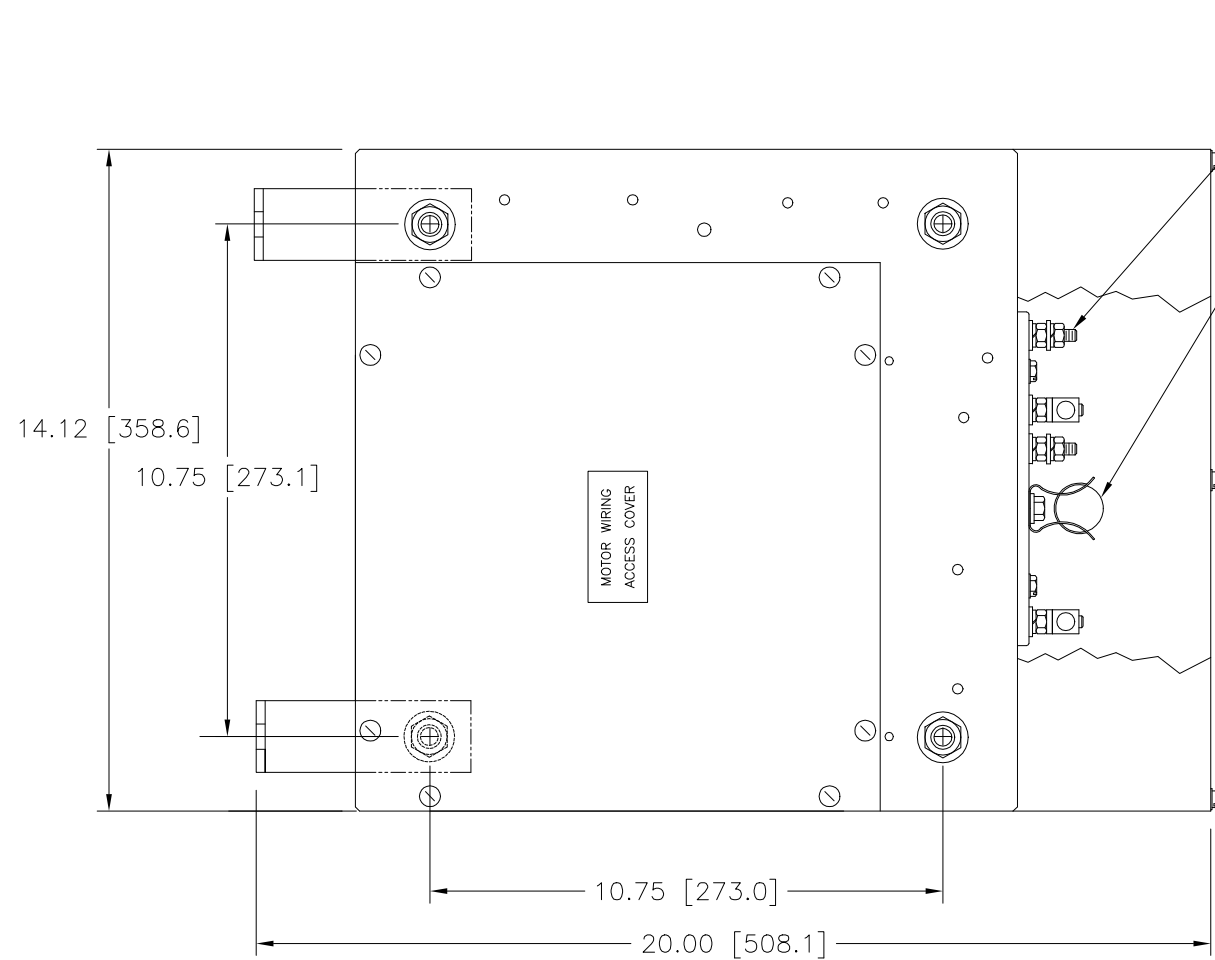


Go to VARIAC.com
 to purchase and for
 technical support.
 Made in the USA



SPEED (SECONDS)	MODEL NUMBER
5	5M6011CT-2P
15	15M6011CT-2P
30	30M6011CT-2P
60	60M6011CT-2P

SPECIFICATIONS								
WIRING	INPUT		OUTPUT			SHAFT ROTATION FOR INCREASE VOLTAGE	TERMINAL CONNECTIONS FOR INCREASING VOLTAGE AS VIEWED FROM ROTOR END	
	VOLTS	HERTZ	VOLTS	MAX. AMPS	MAX. KVA		INPUT	OUTPUT
SINGLE PHASE PARALLEL	120	50/60	0-120	120	14.4	CW	1-4	1-B
			0-140	120	16.8	CW	1-2	1-B

UNLESS OTHERWISE SPECIFIED, TOLERANCE IS # DECIMALS .XX .01H .12 .002 ANGLES 1° DRAFT 1-1/2° UNITS IN [mm] TITLE: SPEC. CONTROL DRAWING VARIABLE MOTORIZED XFMR. TYPE: M6011CT-2P

MATERIAL: ALL DIMENSIONS APPLY AFTER PLATING

DATE: 2/10/00
 DRAWN BY: RAU
 CHECKER: DATE
 ENGINEER: DATE

SCALE: .5=1
 SHEET 1 OF 1

DO NOT SCALE DWG.
 CODE IDENT. NO. 83008
 DWG. NO. 032-6224

CUSTOMER APPROVAL: DATE

STACO
 ENERGY PRODUCTS CO.
 DAYTON, OHIO U.S.A.