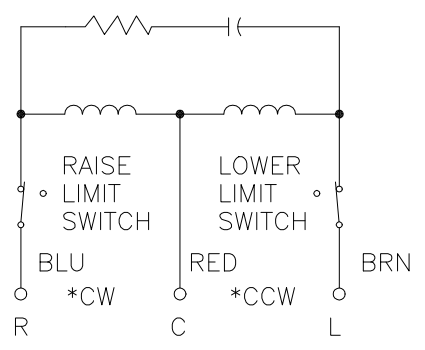
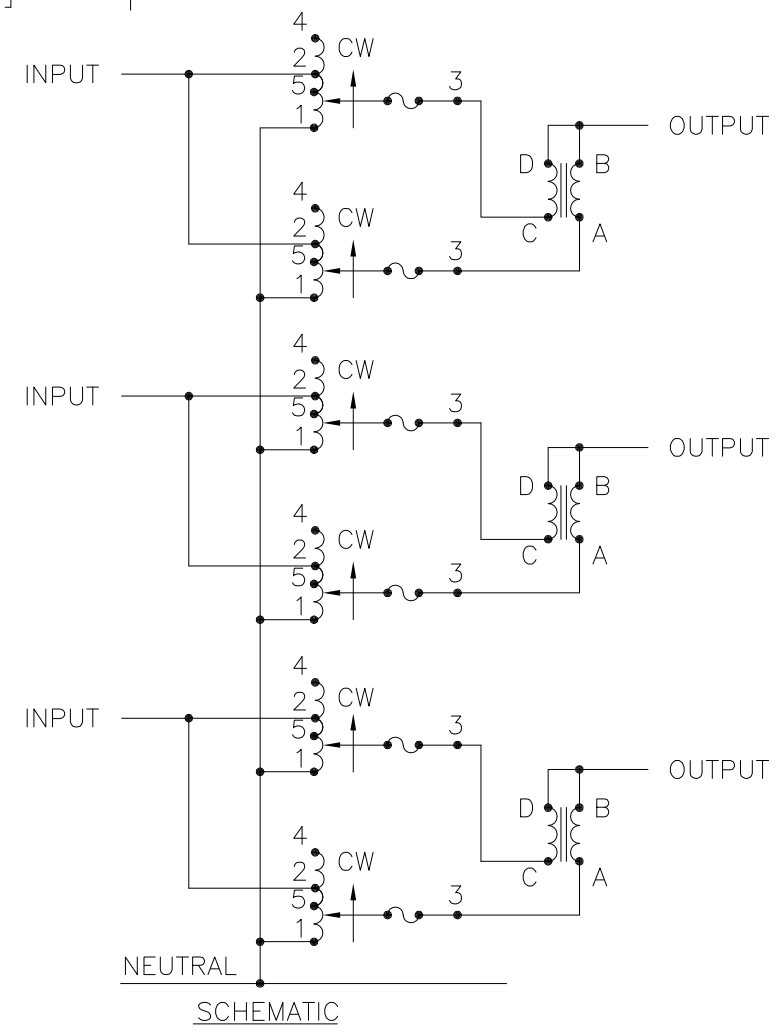
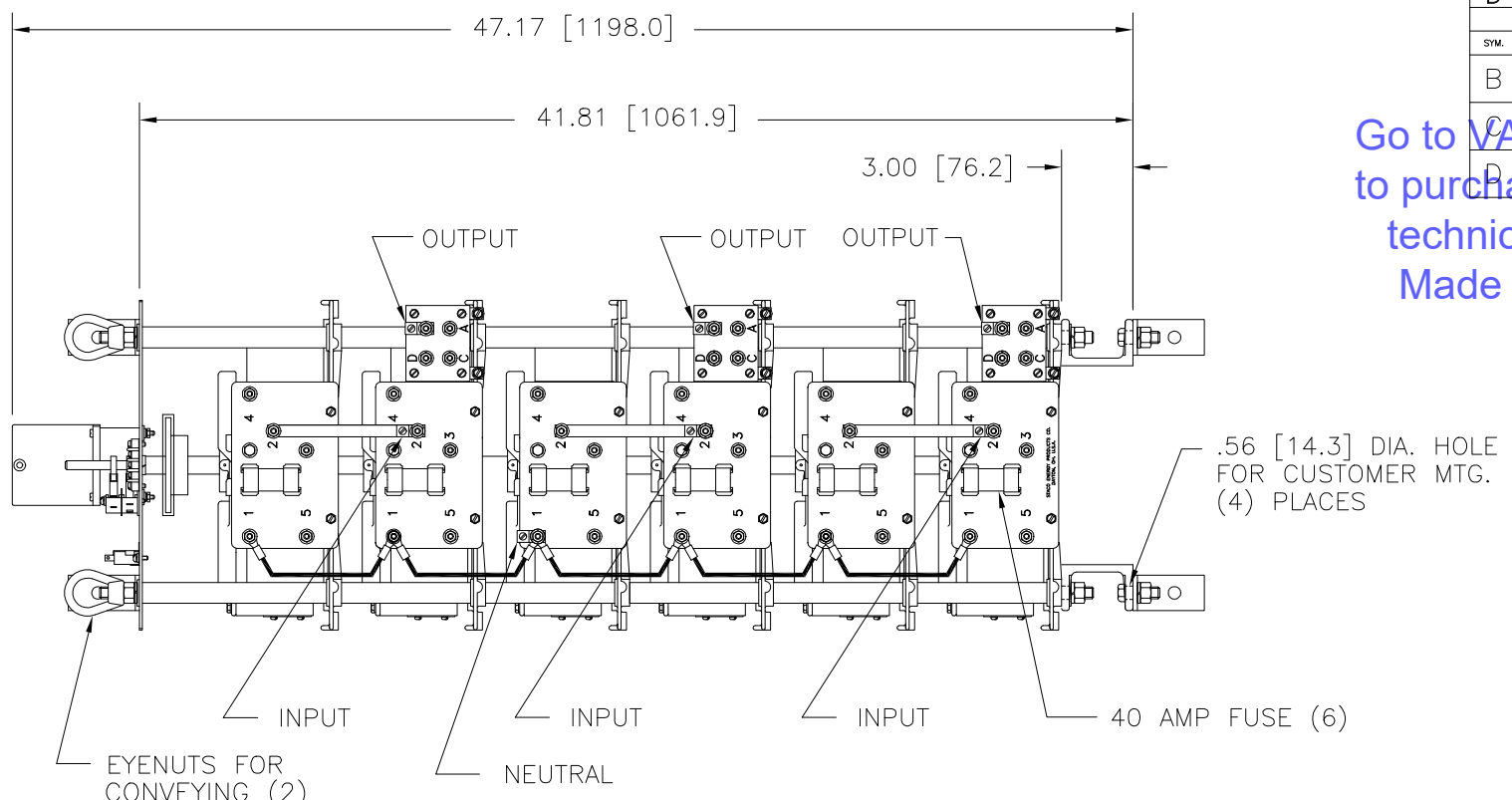
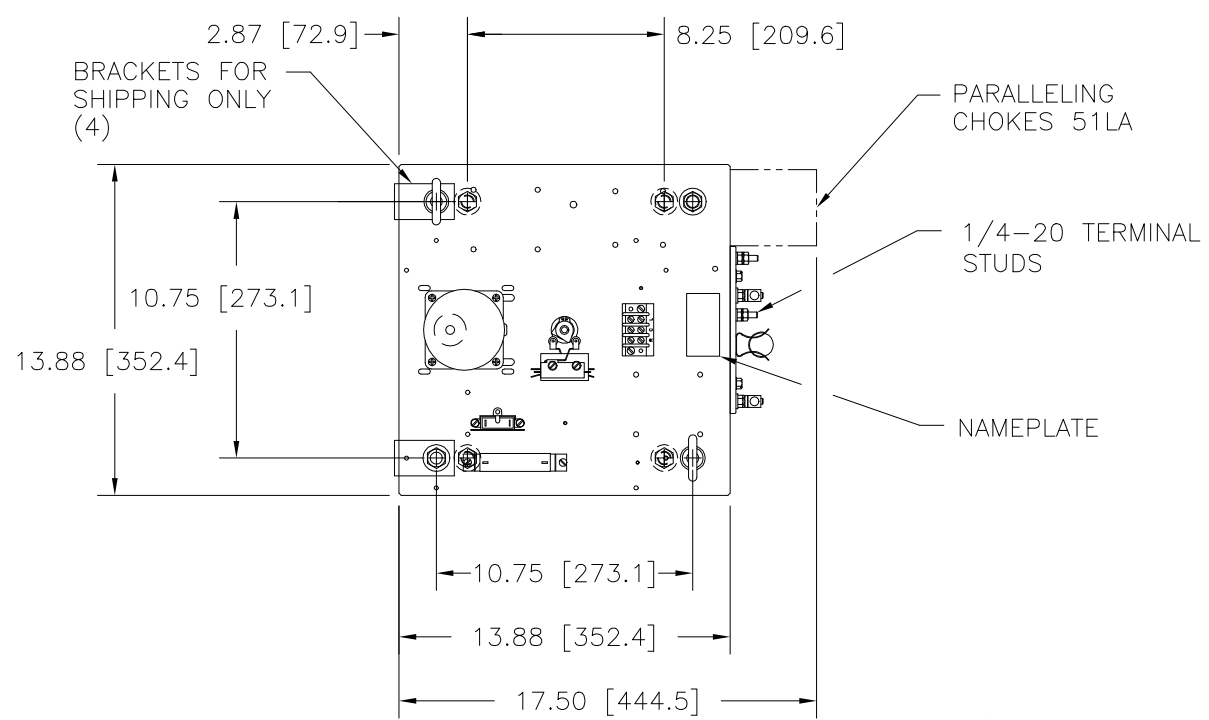


REVISIONS			
SYM.	E.C.N.	DATE	APVD.
B	23001	12/7/95	
REDRAWN ON CAD			
C	23245	11/18/96	
REVISED & UPDATED			
D	24215	4/18/00	
REVISED & UPDATED			

Go to [VARIAc.com](http://www.variac.com) to purchase and for technical support. Made in the USA



MOTOR CIRCUIT
120V 50/60 HZ
* ROTATION AS VIEWED FROM MOTOR END
MOTOR SPEED : SEE CHART

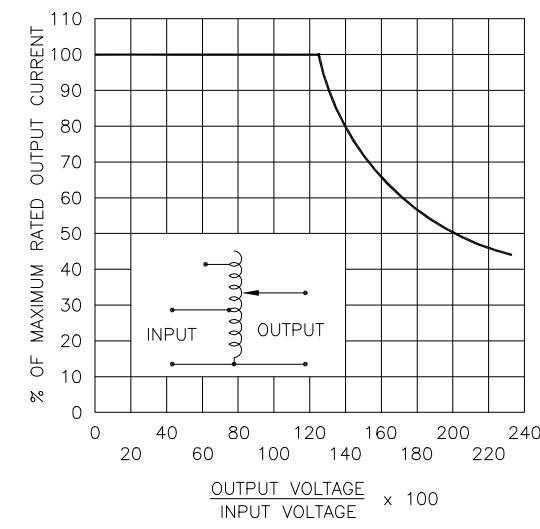


FIGURE A
MAXIMUM OUTPUT CURRENT OF ANY DUAL INPUT VOLTAGE OR VOLTAGE DOUBLER UNIT OPERATED AT LOWER INPUT VOLTAGE.

SPEED (SECONDS)	MODEL NUMBER
15	15M6020-6Y
30	30M6020-6Y
60	60M6020-6Y

WIRING	SPECIFICATIONS							
	INPUT		OUTPUT			SHAFT ROTATION FOR INCREASE VOLTAGE	TERMINAL CONNECTIONS	
	VOLTS	HERTZ	VOLTS	MAX. AMPS	MAX. KVA		FOR INCREASING VOLTAGE AS VIEWED FROM ROTOR END	
THREE PHASE WYE	480	50/60	0-480	70	58.1	CW	4-4-4	B-B-B
		60	0-560	70	67.8	CW	2-2-2	B-B-B
	240	60	0-560	70 #30 V.D.	29.1 ++	CW	5-5-5	B-B-B

UNLESS OTHERWISE SPECIFIED, TOLERANCE IS # DECIMALS HOLES .12 .002 ANGLES 1° DRAFT 1-1/2° UNITS IN [mm]

MATERIAL: ALL DIMENSIONS APPLY AFTER PLATING

TITLE: SPEC. CONTROL DRAWING MOTORIZED VARIABLE XFMR M6020-6Y

STACO ENERGY PRODUCTS CO. A COMPONENTS CORPORATION OF AMERICA COMPANY DAYTON, OHIO U.S.A.

DRAWN BY: TIM RAU DATE: 11/18/96 FIRST USED ON: DO NOT SCALE DWG. CUSTOMER APPROVAL: DATE:

CHECKER: DATE: WEIGHT APPROX. CODE IDENT. NO. 83008 DWG. NO. 032-8363

ENGINEER: DATE: SCALE .25=1 SHEET 1 OF 1