

Go to VARIAC.com
 to purchase and for
 technical support.
 Made in the USA

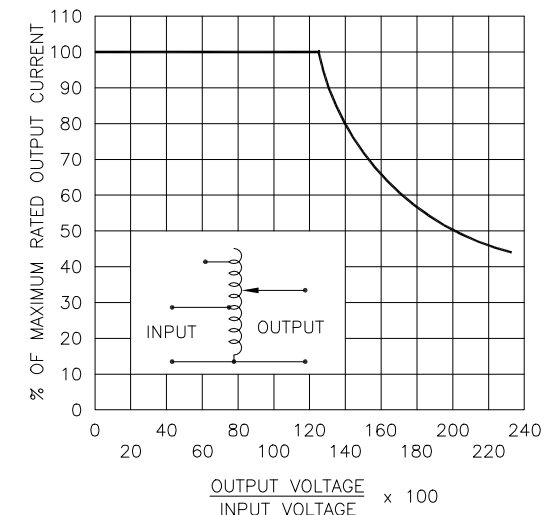
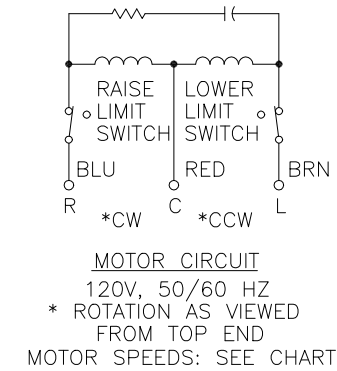
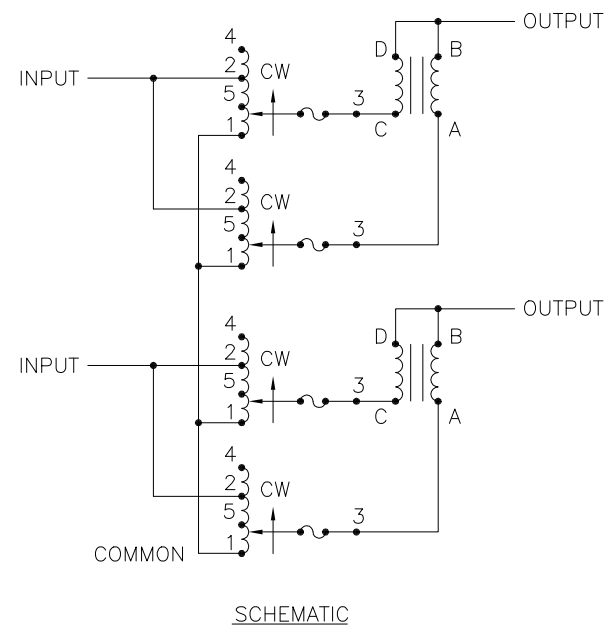
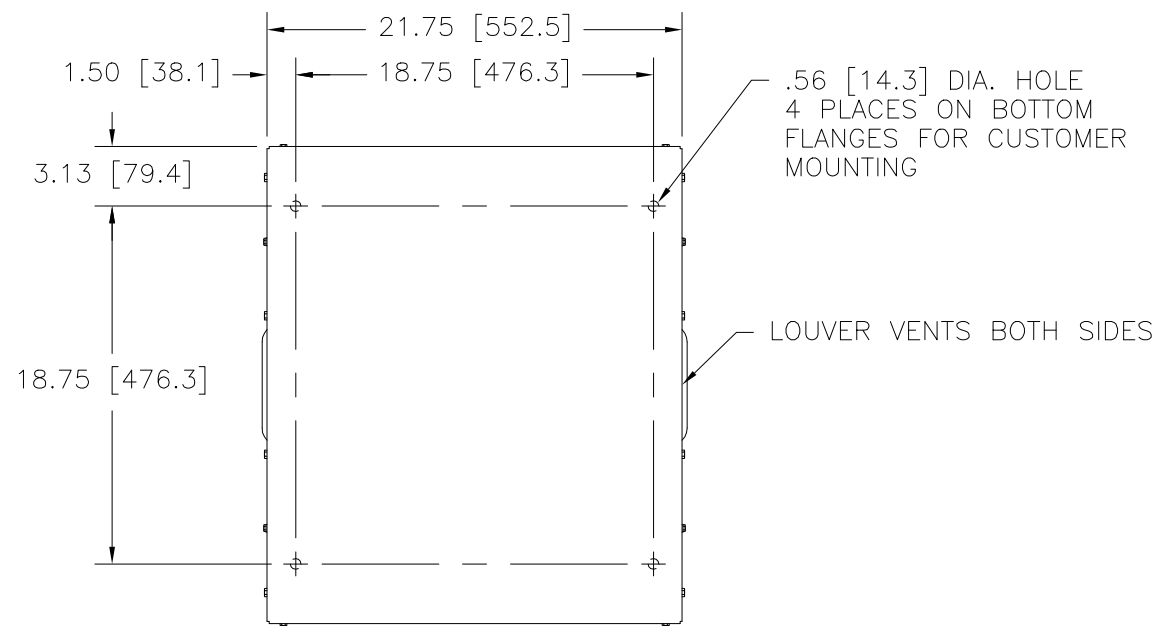


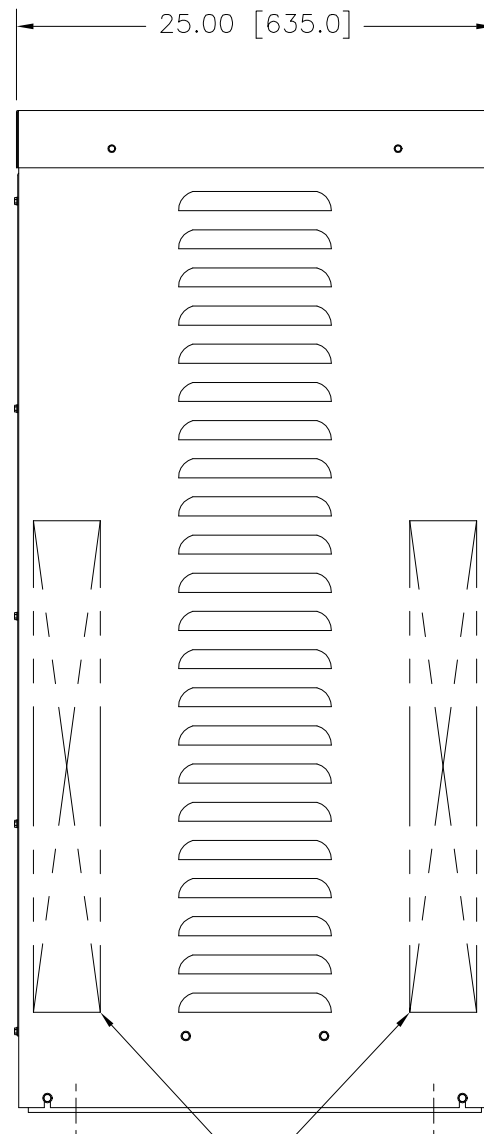
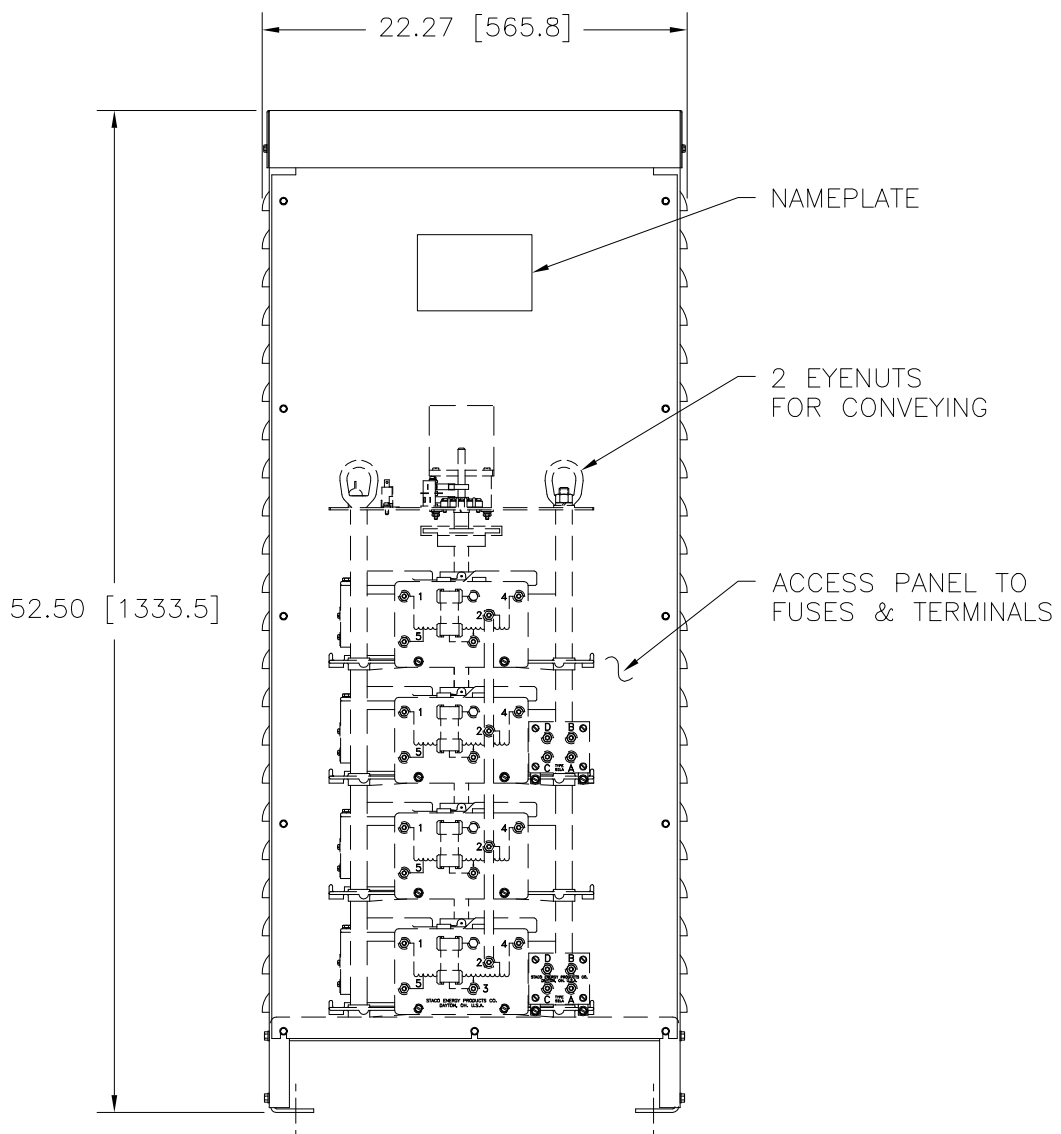
FIGURE A
 MAXIMUM OUTPUT CURRENT OF ANY DUAL INPUT VOLTAGE OR VOLTAGE DOUBLER UNIT OPERATED AT LOWER INPUT VOLTAGE.

MAXIMUM OUTPUT CURRENT IN OUTPUT VOLTAGE RANGE FROM 0 TO 20 % ABOVE LINE VOLTAGE. AT HIGHER OUTPUT VOLTAGES, OUTPUT CURRENT MUST BE REDUCED ACCORDING TO RATING CURVE, FIGURE A.

++ MAXIMUM KVA AT MAXIMUM OUTPUT AND CORRESPONDING DE-RATED CURRENT. MAXIMUM KVA AT LOWER OUTPUT VOLTAGES MAY BE CALCULATED FROM RATING CURVE, FIGURE A.

V.D. = VOLTAGE DOUBLER.

SPEED (SECONDS)	MODEL NUMBER
15	15M6020E-4PS
30	30M6020E-4PS
60	60M6020E-4PS



RECOMMENDED AREAS FOR CONDUIT ENTRY.

WIRING	INPUT		OUTPUT			SHAFT ROTATION FOR VOLTAGE INCREASE	TERMINAL CONNECTIONS FOR INCREASING VOLTAGE AS VIEWED FROM TOP	
	VOLTS	HERTZ	VOLTS	CONSTANT CURRENT LOAD			INPUT	OUTPUT
				MAX. AMPS	MAX. KVA			
SINGLE PHASE SERIES PARALLEL	480	50/60	0-480	70	33.6	CW	4-4	B-B
			0-560	70	39.2	CW	2-2	B-B
	240	50/60	0-560	70#30 V.D.	16.8++	CW	5-5	B-B

UNLESS OTHERWISE SPECIFIED, TOLERANCE IS # DECIMALS .XX .000 .12 .002 .03 .XXX .005 Holes ANGLES DRAFT 1° 1-1/2° UNITS IN [mm]

TITLE: SPEC. CONTROL DRAWING MOTORIZED VARIABLE XFMR. MODEL: M6020E-4PS

MATERIAL: ALL DIMENSIONS APPLY AFTER PLATING

STACO ENERGY PRODUCTS CO. A COMPONENTS CORPORATION OF AMERICA COMPANY DAYTON, OHIO U.S.A.

DRAWN BY S.A. SMITH DATE 6/2/00 FIRST USED ON DO NOT SCALE DWG. CUSTOMER APPROVAL DATE

CHECKER DATE WEIGHT APPROX. CODE IDENT. NO. 83008 DWG. NO. 032-7746

ENGINEER DATE SCALE .2=1 SHEET 1 OF 1