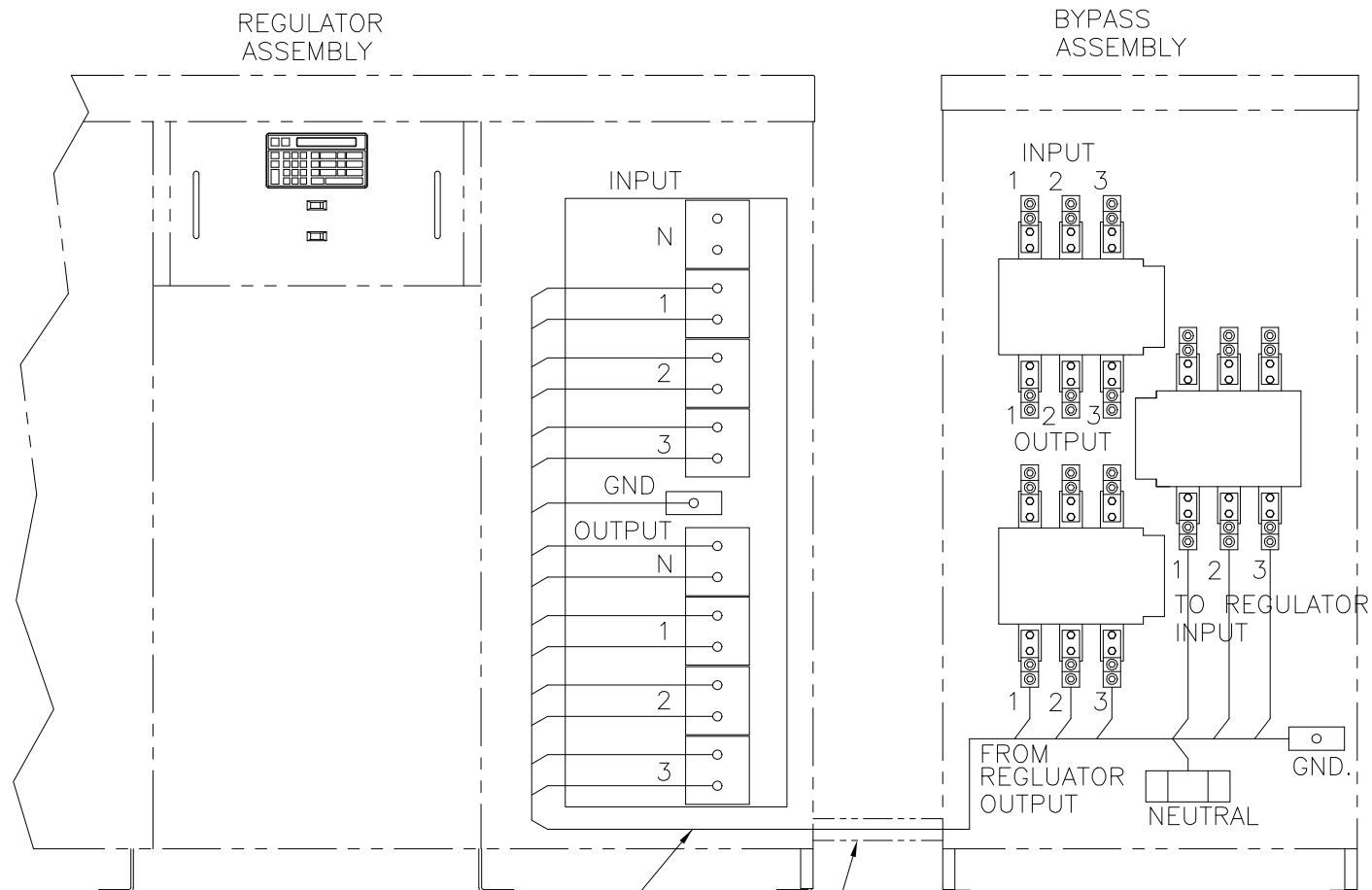
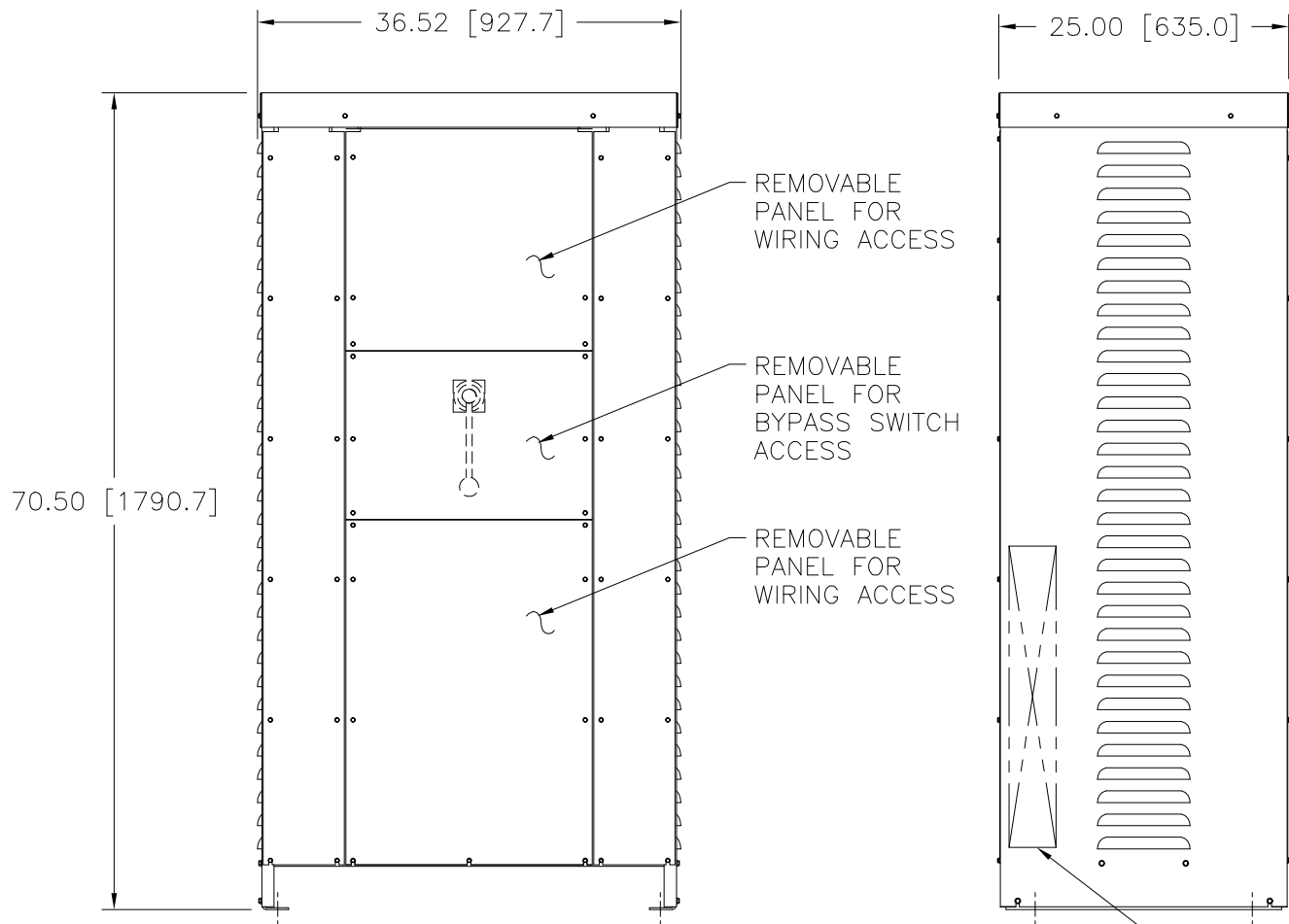


BYPASS SWITCH: WHEN THIS SWITCH IS PLACED IN THE "BYPASS" POSITION, THE INCOMING LINE IS CONNECTED DIRECTLY TO THE OUTGOING LINE AND THE REGULATOR IS REMOVED FROM THE CIRCUIT. IN THE "NORMAL" POSITION, THE REGULATOR WILL CORRECT FOR HIGH OR LOW SUPPLY LINE VOLTAGES WHILE MAINTAINING A CONSTANT PRESET OUTPUT VOLTAGE. THE "OFF" POSITION BREAKS POWER TO THE REGULATOR AND BYPASS CIRCUITS. THIS SWITCH IS A LOAD BREAK DEVICE AND MAY BE USED FOR A SERVICE DISCONNECT.

Go to VARIAC.com to purchase and for technical support. Made in the USA

BYPASS SWITCH RATINGS			
THREE PHASE	50/60	600	800
WIRING	HERTZ	VOLTS	AMPS



WIRE RANGES FOR CUSTOMER WIRING

INPUT/OUTPUT TERMINALS: (4)(600MCM-#2 AWG) COMPRESSION PER PHASE
 TO/FROM REGULATOR TERMINALS: (2)(600MCM-#2 AWG) COMPRESSION PER PHASE
 NEUTRAL TERMINALS: (6)(500MCM-#4 AWG) COMPRESSION
 GROUND TERMINAL: (1)(300MCM-#6 AWG) COMPRESSION

UNLESS OTHERWISE SPECIFIED, TOLERANCE IS #		TITL: SPEC. CONTROL DRAWING MAINT. BYPASS SWITCH TYPE: MB-T800		
DECIMALS	HOLES	ANGLES	DRAFT	
.XX, .010	.002	1°	1-1/2°	
MATERIAL:		UNITS IN [mm]		
		ALL DIMENSIONS APPLY AFTER PLATING		
DRAWN BY: TIM RAU		DATE: 6/12/96	FIRST USED ON:	DO NOT SCALE DWG.
CHECKER:		DATE:	WEIGHT APPROX.	CODE IDENT. NO. 83008
ENGINEER:		DATE:	SCALE: .125=1	SHEET 1 OF 2
		CUSTOMER APPROVAL:		DATE:
		DWG. NO. 810-0020		