

1/4-28 X .38 [9.6] DEEP  
 (3) HOLES 120° APART  
 ON A 6.00 [152.4] DIA.  
 BOLT CIRCLE

(4) SLOTS FOR .38 [9.6] DIA. MOUNTING HARDWARE

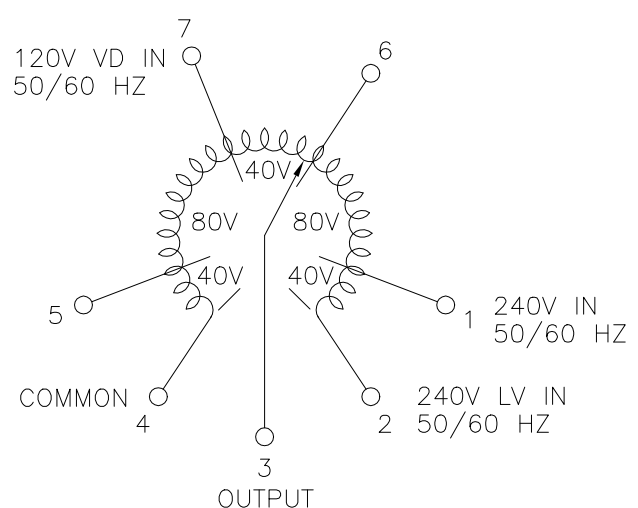
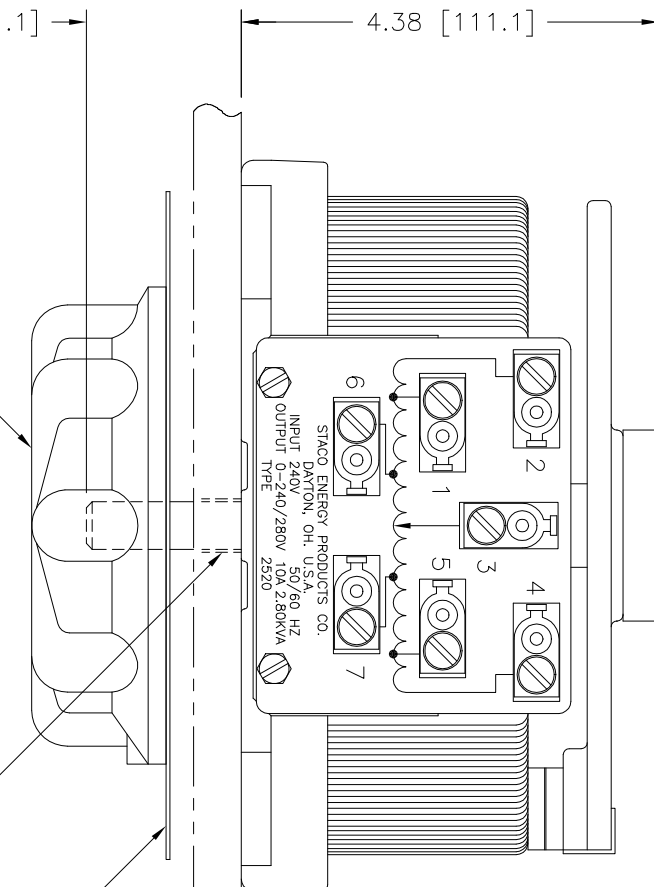
5.00 [127.0] DIA. KNOB

OPTIONAL TERMINALS FOR PUSH ON OR SOLDER CONNECTIONS (.032 X .250) [0.8 X 6.4]

HOLE IN PANEL TO CLEAR .50 [12.7] DIA. SHAFT

7.00 [177.8] DIA. DIAL PLATE GRADUATED (0-100)

.50 [12.7] MAX. PANEL THICKNESS



SCHEMATIC

AS VIEWED FROM BASE END  
 FUSE RECOMENDED BUT NOT SUPPLIED

SPECIFICATIONS											
WIRING	INPUT		OUTPUT				SHAFT ROTATION TO INCREASE VOLTAGE	TERMINAL CONNECTIONS			
	VOLTS	HERTZ	VOLTS	CONSTANT CURRENT LOAD		CONSTANT IMPEDANCE LOAD		FOR INCREASING VOLTAGE AS VIEWED FROM BASE END			
				MAX. AMPS	MAX. KVA	MAX. AMPS		MAX. KVA	INPUT	JUMPER	OUTPUT
SINGLE PHASE	240	50/60	0-240	10	2.40	13	3.12	CW	2-4	---	4-3
			0-280	10	2.80	---	---	CCW	1-4	---	4-3
	120	50/60	0-280	10	1.20	---	---	CW	7-4	---	4-3
								CCW	6-2	---	2-3

UNLESS OTHERWISE SPECIFIED, TOLERANCE IS # DECIMALS Holes .06 ANGLES 1° DRAFT 1-1/2° UNITS IN [mm]

MATERIAL: ALL DIMENSIONS APPLY AFTER PLATING

TITLE: SPEC. CONTROL DRAWING VARIABLE TRANSFORMER TYPE: 2520

DRAWN BY: K. TOLLIVER DATE: 2/10/92 FIRST USED ON: 2520 DO NOT SCALE DWG. CUSTOMER APPROVAL: DATE:

CHECKER: DATE: WEIGHT APPROX.: 21 LBS. CODE IDENT. NO.: 83008 DWG. NO.: 031-5401

ENGINEER: DATE: SCALE: 1=1 SHEET 1 OF 1 DWG. NO.: 031-5401

**SACO** ENERGY PRODUCTS CO. DAYTON, OHIO U.S.A.