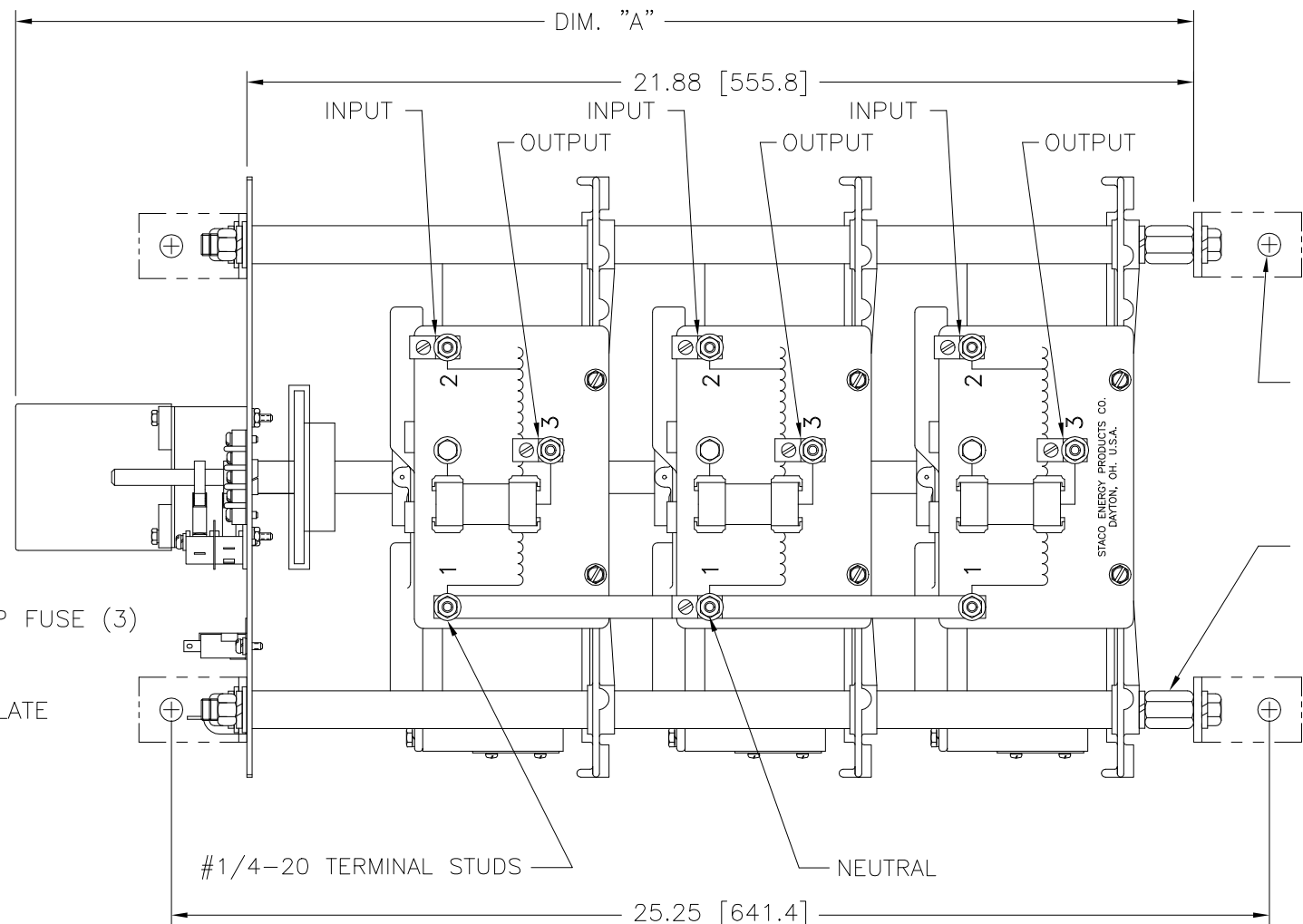
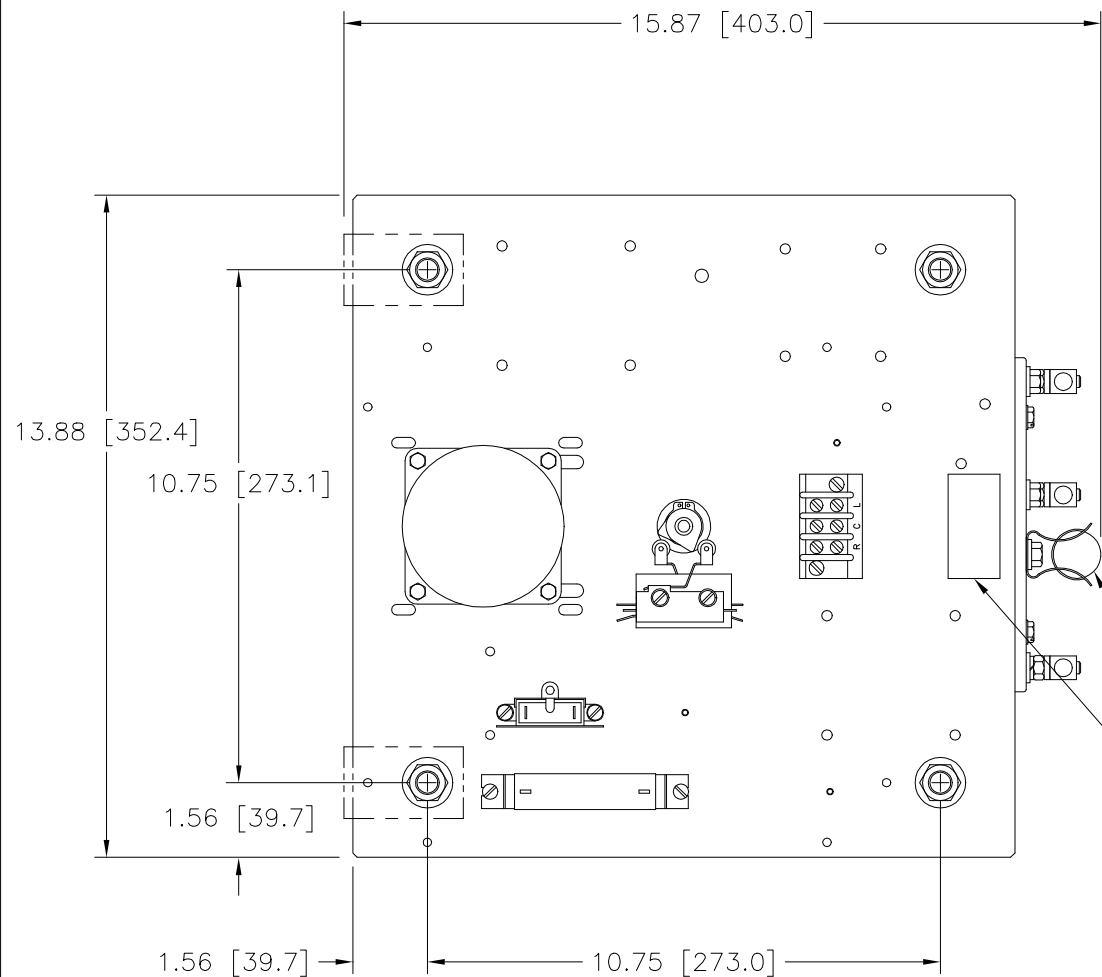
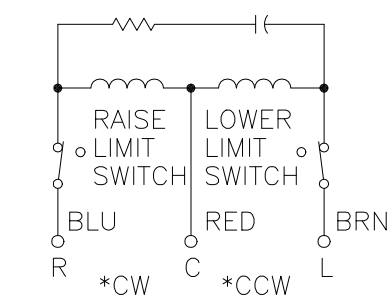
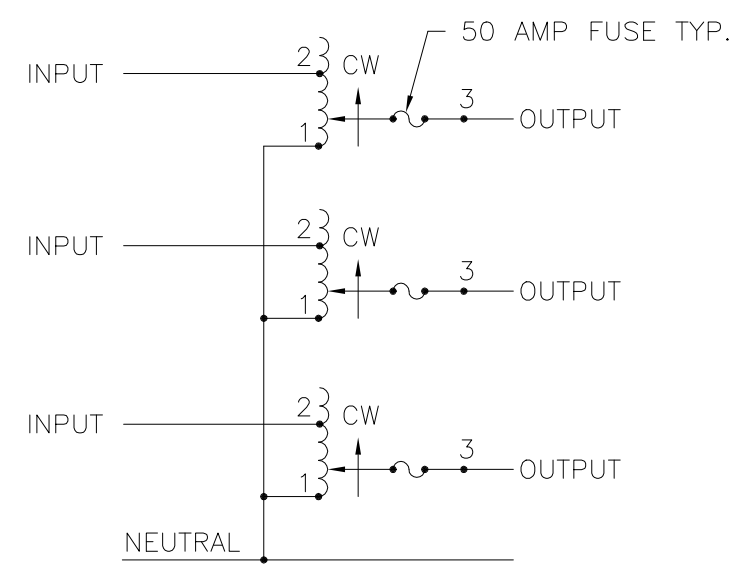


DWG. NO.	031-6864		
REVISIONS			
SYM.	E.C.N.	DATE	APVD.
A	23457	8/12/97	
REVISED & REDRAWN			
B	24281	6/13/00	
REVISED & UPDATED			



.53 [13.4] DIA. HOLE FOR CUSTOMER MTG. (4) HOLES

1/2-13 X .56 [14.2] DP. STANDOFFS FOR MTG. BOLTS



MOTOR CIRCUIT
120V, 50/60 HZ
* ROTATION AS VIEWED FROM TOP END
MOTOR SPEEDS: SEE CHART

MODEL NUMBER	SPEED (SECONDS)	DIM "A"
5M5011-3Y	5	25.56 [649.2]
15M5011-3Y	15	27.38 [695.4]
30M5011-3Y	30	27.38 [695.4]
60M5011-3Y	60	27.38 [695.4]

WIRING	INPUT		OUTPUT		SHAFT ROTATION FOR VOLTAGE INCREASE	TERMINAL CONNECTIONS FOR INCREASING VOLTAGE AS VIEWED FROM TOP		
	VOLTS	HERTZ	VOLTS	CONSTANT CURRENT LOAD		INPUT	OUTPUT	
				MAX. AMPS				MAX. KVA
THREE PHASE WYE	240	60	0-280	50	24.2	CW	2-2-2 3-3-3	

UNLESS OTHERWISE SPECIFIED, TOLERANCE IS # DECIMALS .XX .XXX .005 Holes .12 .0008 .03 ANGLES 1° DRAFT 1-1/2° UNITS IN [mm]

MATERIAL: ALL DIMENSIONS APPLY AFTER PLATING

TITLE: SPEC. CONTROL DRAWING MOTORIZED VARIABLE XFMR. TYPE: M5011-3Y

STACO ENERGY PRODUCTS CO. A COMPONENTS CORPORATION OF AMERICA COMPANY DAYTON, OHIO U.S.A.

DRAWN BY: TIM RAU DATE: 7/25/97 FIRST USED ON: DO NOT SCALE DWG. CUSTOMER APPROVAL: DATE:

CHECKER: DATE: WEIGHT APPROX. 233 LBS. CODE IDENT. NO. 83008 DWG. NO. 031-6864

ENGINEER: DATE: SCALE .5=1 SHEET 1 OF 1