

DWG. NO.	032-8275		
REVISIONS			
SYM.	E.C.N.	DATE	APVD.
B	23464	8/4/97	
C	23647	1/12/98	
D	24309	8/17/00	

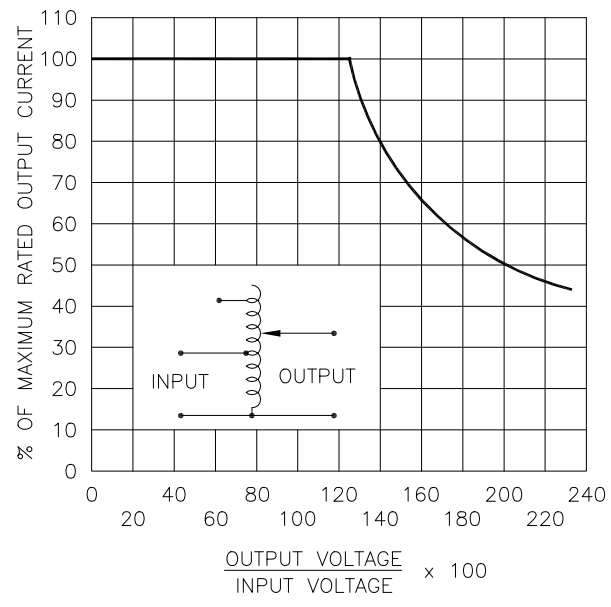
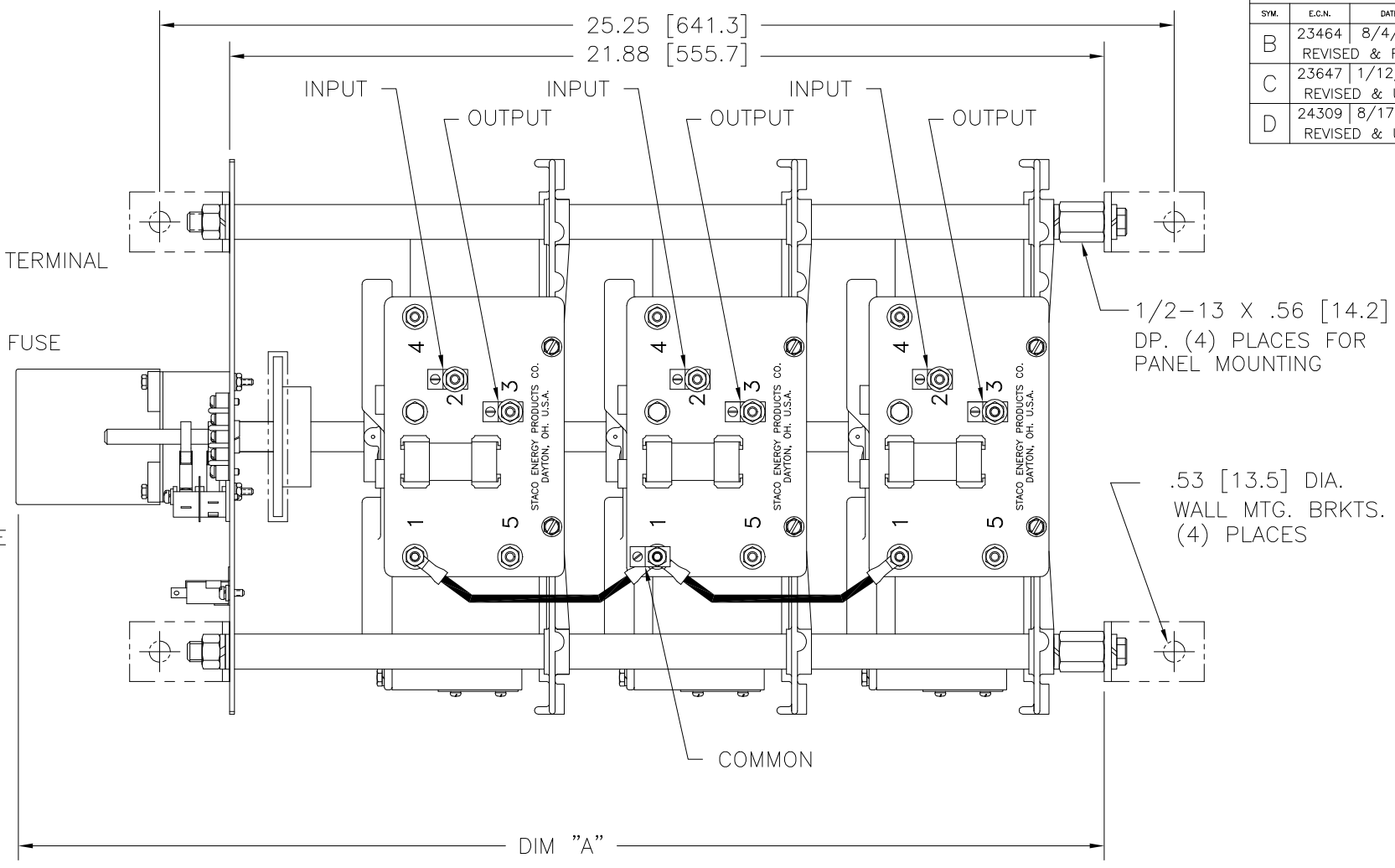
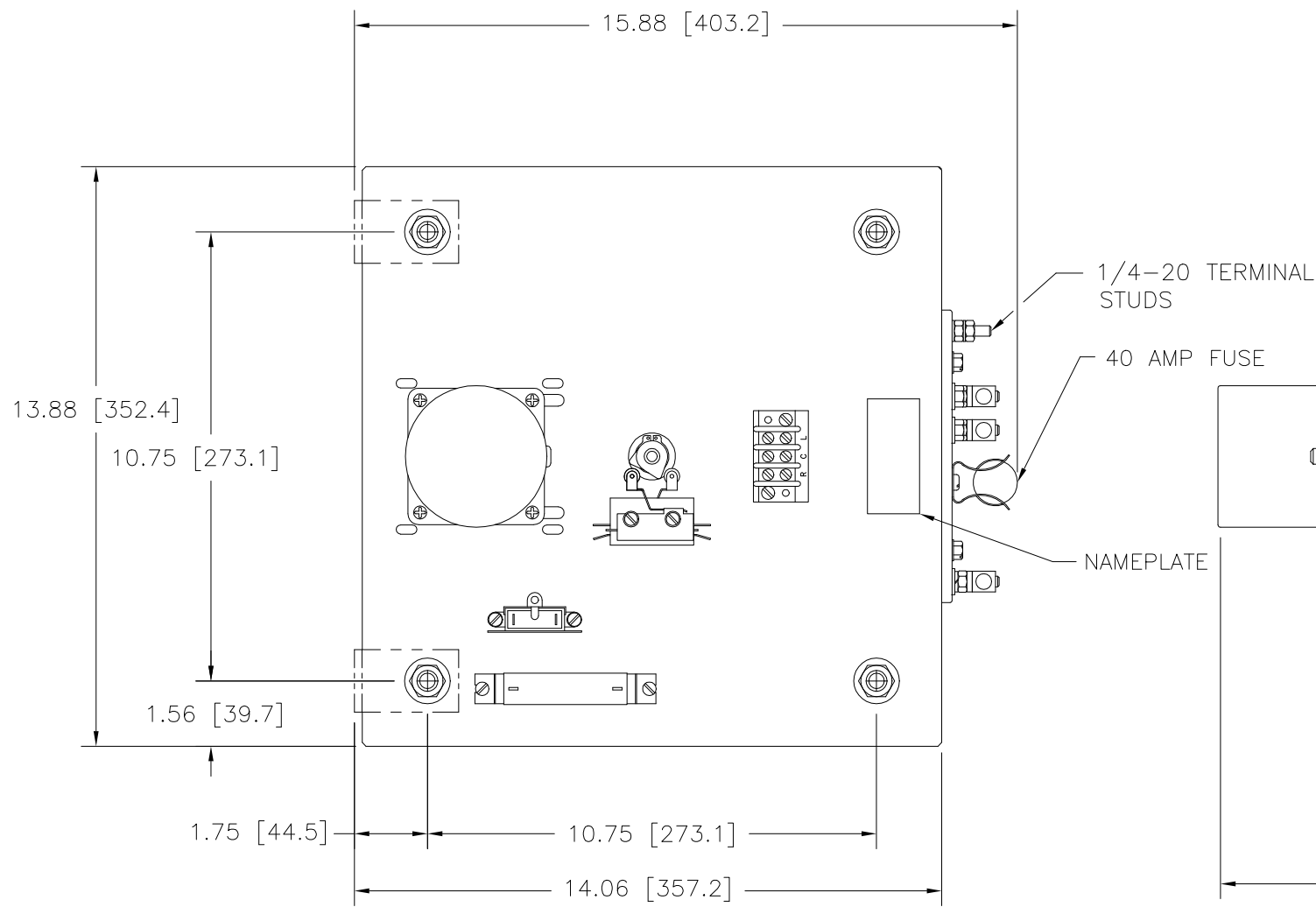
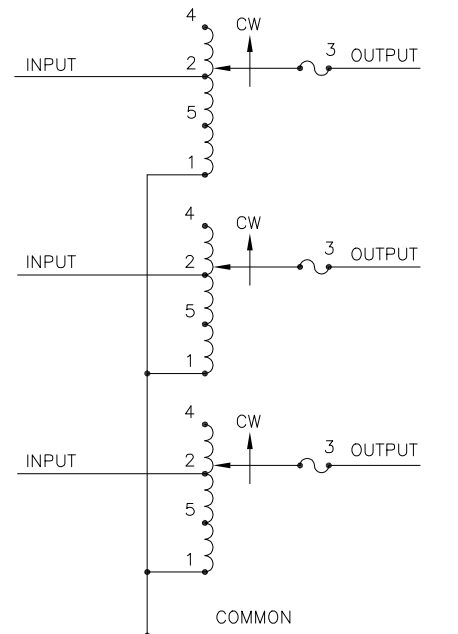
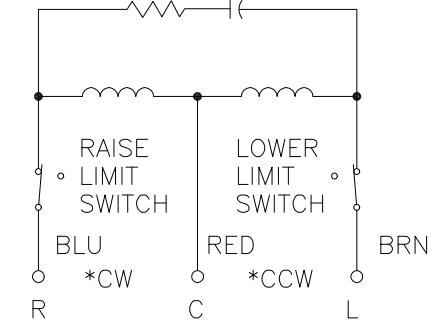


FIGURE A
MAXIMUM OUTPUT CURRENT OF ANY DUAL INPUT VOLTAGE OR VOLTAGE DOUBLER UNIT OPERATED AT LOWER INPUT VOLTAGE.



SCHEMATIC



MOTOR CIRCUIT
120V 60 HZ
* ROTATION AS VIEWED FROM MOTOR END
MOTOR SPEED: SEE CHART

SPEED (SECONDS)	MODEL NUMBER	DIM "A"
5	5M6020-3Y	25.75 [654.0]
15	15M6020-3Y	27.38 [692.0]
30	30M6020-3Y	27.38 [692.0]
60	60M6020-3Y	27.38 [692.0]

* MAXIMUM OUTPUT CURRENT IN OUTPUT VOLTAGE RANGE FROM 0 TO 25% ABOVE LINE VOLTAGE. AT HIGHER OUTPUT VOLTAGES, OUTPUT CURRENT MUST BE REDUCED ACCORDING TO RATING CURVE, FIGURE A.

V.D. = VOLTAGE DOUBLER.

++ MAXIMUM KVA AT MAXIMUM OUTPUT AND CORRESPONDING DE-RATING CURRENT. MAXIMUM KVA AT LOWER OUTPUT VOLTAGES MAY BE CALCULATED FROM RATING CURVE, FIGURE A.

SPECIFICATIONS									
WIRING	INPUT		OUTPUT			SHAFT ROTATION TO INCREASE VOLTAGE	TERMINAL CONNECTIONS FOR INCREASING VOLTAGE AS VIEWED FROM ROTOR END		
	VOLTS	HERTZ	VOLTS	MAX. AMPS	MAX. KVA		INPUT	JUMPER	OUTPUT
THREE PHASE WYE	480	50/60	0-480	35	29.1	CW	4-4-4	—	3-3-3
		60	0-560	35	33.9	CW	2-2-2	—	3-3-3
	240	60	0-560	35-15 V.D.	14.5**	CW	5-5-5	—	3-3-3

UNLESS OTHERWISE SPECIFIED, TOLERANCE IS # DECIMALS HOLES .12 ANGLES DRAFT .XX .005 .005 1° 1-1/2° UNITS IN [mm]

TITLE: SPEC. CONTROL DRAWING MOTORIZED VARIABLE XFMR. TYPE: M6020-3Y

STACO
ENERGY PRODUCTS CO.
A COMPONENTS CORPORATION OF AMERICA COMPANY
DAYTON, OHIO U.S.A.

DRAWN BY	DATE	FIRST USED ON	DO NOT SCALE DWG.	CUSTOMER APPROVAL	DATE
TIM RAU	8/4/97				
CHECKER	DATE	WEIGHT APPROX.	CODE IDENT. NO. 83008	DWG. NO.	DWG. NO.
				032-8275	032-8275
ENGINEER	DATE	SCALE	SHEET 1 OF 1	D	
		.50=1			