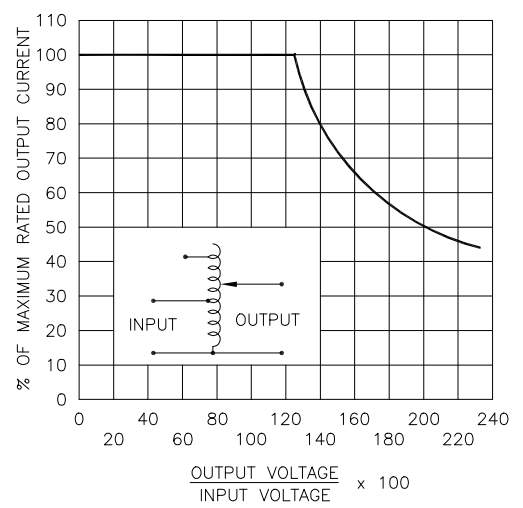
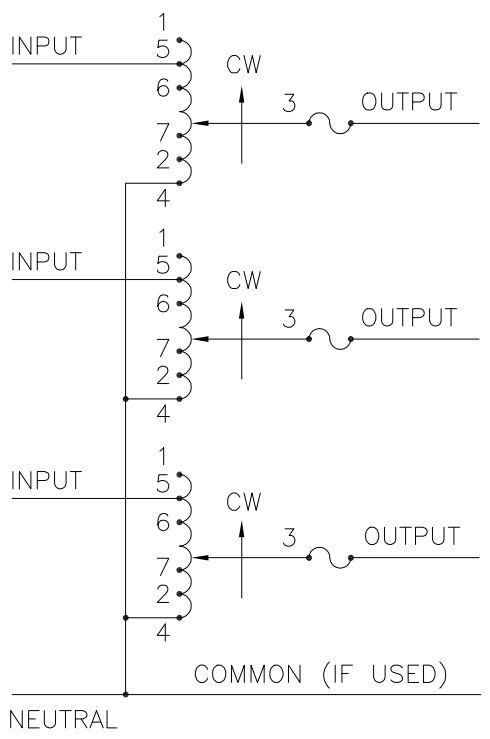


- # MAXIMUM OUTPUT CURRENT IN OUTPUT VOLTAGE RANGE FROM 0 TO 25% ABOVE LINE VOLTAGE. AT HIGHER OUTPUT VOLTAGES, THE OUTPUT CURRENT MUST BE REDUCED ACCORDING TO THE DERATING CURVE FIGURE A.
  - § MAXIMUM KVA AT MAXIMUM OUTPUT VOLTAGE AND CORRESPONDING DERATED OUTPUT CURRENT. MAXIMUM KVA FOR LOWER VOLTAGES MAY BE CALCULATED FROM DERATING CURVE FIGURE A.
  - π IF GANGED UNITS ARE USED IN A SYSTEM THAT ORDINARILY HAS A COMMON NEUTRAL OR GROUND BETWEEN SOURCE AND LOAD, THE NEUTRAL OR GROUND MUST BE CONNECTED TO THE COMMON TERMINALS OF THE VARIABLE TRANSFORMER ASSEMBLY. IF THE SYSTEM HAS NO NEUTRAL, THE LOAD MUST BE BALANCED OR THE TRANSFORMER WILL BE DAMAGED.
  - JUMPER PROVIDED IN STANDARD COMMON POSITION AND SHOULD BE MOVED OR REMOVED AS REQUIRED.
- ++ LINE TO LINE VOLTAGE.



WIRING	SPECIFICATIONS								SHAFT ROTATION TO INCREASE VOLTAGE	TERMINAL CONNECTIONS		
	INPUT		OUTPUT				FOR INCREASING VOLTAGE AS VIEWED FROM BASE END ■	INPUT		JUMPER	OUTPUT	
	VOLTS	HERTZ	VOLTS	CONSTANT CURRENT LOAD	CONSTANT IMPEDANCE LOAD	MAX. AMPS						MAX. KVA
THREE PHASE WYE π	480 ++	50/60	0-480	3.5	2.91	5.0	4.16	CW	1-1-1	4-4-4	3-3-3	
		60	0-560	3.5	3.40	—	—	CCW	4-4-4	1-1-1	3-3-3	
	240 ++	60	0-560	3.5#	1.46§	—	—	CW	7-7-7	4-4-4	3-3-3	
								CCW	6-6-6	1-1-1	3-3-3	

UNLESS OTHERWISE SPECIFIED, TOLERANCE IS # DECIMALS .XX .XXX .005  
 HOLES .002 ANGLES 1° DRAFT 1-1/2°  
 UNITS IN [mm]  
 ALL DIMENSIONS APPLY AFTER PLATING

MATERIAL: \_\_\_\_\_

TITLE: SPEC. CONTROL DRAWING VARIABLE TRANSFORMER MODEL: 1020B-3

STACO ENERGY PRODUCTS CO. A COMPONENTS CORPORATION OF AMERICA COMPANY DAYTON, OHIO U.S.A.

DRAWN BY S.A. SMITH DATE 9/22/97 FIRST USED ON \_\_\_\_\_ DO NOT SCALE DWG. CUSTOMER APPROVAL \_\_\_\_\_ DATE \_\_\_\_\_  
 CHECKER \_\_\_\_\_ DATE \_\_\_\_\_ WEIGHT APPROX. 29.5 LBS CODE IDENT. NO. 83008 DWG. NO. 031-2334  
 ENGINEER \_\_\_\_\_ DATE \_\_\_\_\_ SCALE 1=1 SHEET 1 OF 1

SCHEMATIC  
 FUSE RECOMMENDED BUT NOT SUPPLIED.