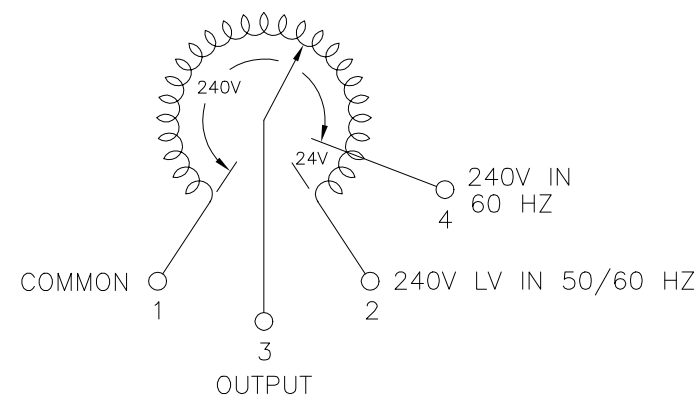
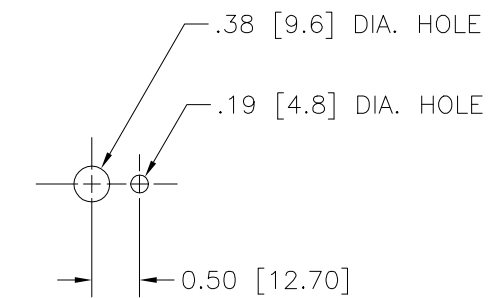


.25 [6.4] WIDE X .03 [0.8] THICK QUICK CONNECT TERMINALS WITH SOLDER LUGS AT OPPOSITE ENDS



SCHMATIC
VIEWED FROM BASE END



PANEL MTG. DETAIL

SPECIFICATIONS											
WIRING	INPUT		OUTPUT				SHAFT ROTATION TO INCREASE VOLTAGE	TERMINAL CONNECTIONS			
	VOLTS	HERTZ	VOLTS	CONSTANT CURRENT LOAD		CONSTANT IMPEDANCE LOAD		FOR INCREASING VOLTAGE AS VIEWED FROM BASE END			
				MAX. AMPS	MAX. KVA	MAX. AMPS		MAX. KVA	INPUT	JUMPER	OUTPUT
SINGLE PHASE	240	50/60	0-240	0.8	0.19	1.0	0.24	CW	1-2	---	1-3
		50/60	0-264	0.8	0.21	---	---	CCW	1-2	---	2-3
			0-264	0.8	0.21	---	---	CW	1-4	---	1-3

UNLESS OTHERWISE SPECIFIED, TOLERANCE IS # DECIMALS .XX .004 .002 .001 .0005 Holes .002 .001 .0005 Angles 1° 1-1/2° UNITS IN [mm]

TITLE: SPEC. CONTROL DRAWING VARIABLE TRANSFORMER TYPE: 252



The information and design disclosed herein was originated by and is the property of STACO ENERGY PRODUCTS CO., which reserves all patent, proprietary, design, manufacturing, reproduction, use and sale rights thereto, and to any article disclosed therein except to the extent rights are expressly granted to others. The foregoing does not apply to vendor proprietary parts.		DATE	1/12/00	DO NOT SCALE DWG.	CUSTOMER APPROVAL	DATE
DRAWN BY	TIM RAU	DATE	1/12/00	WEIGHT APPROX.	CODE IDENT. NO.	DWG. NO.
CHECKER		DATE		SCALE	1=1	SHEET 1 OF 1
ENGINEER		DATE				DWG. NO. 031-0340