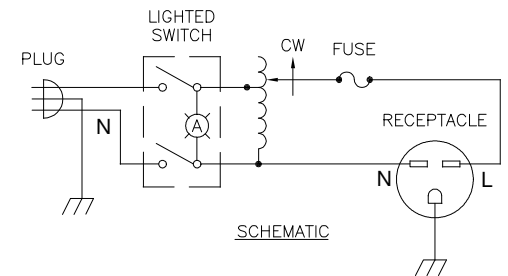
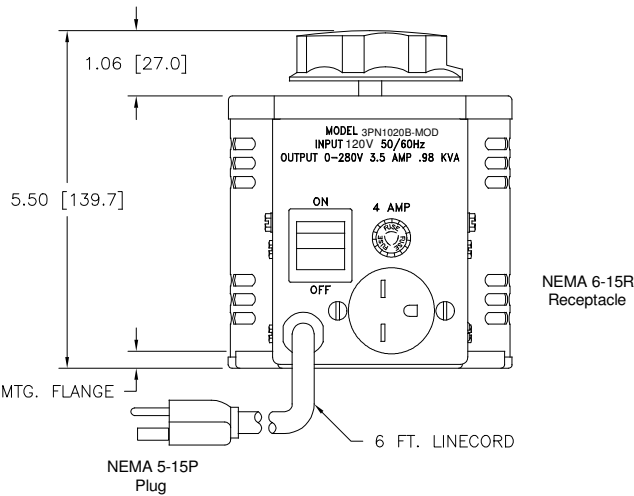


Go to VARIAC.com
 to purchase and for
 technical support.
 Made in the USA



* 20VAC Single Phase 50/60 Hz Input;
 0-280VAC Output;
 3.5 Amps @ 0-150VAC Output;
 2 Amps @ 215VAC Output;
 1.8 Amps @ 240VAC Output;
 1.5 Amps @ 280VAC Output;

SPECIFICATIONS					
WIRING	INPUT		OUTPUT		
	VOLTS	HERTZ	VOLTS	CONSTANT CURRENT LOAD	
SINGLE PHASE	120	50/60	0-280	MAX. AMPS	MAX. KVA
				3.5*	.98

UNLESS OTHERWISE SPECIFIED, TOLERANCE IS: <small>DECIMALS IN HOLES .005 ANGLES .005 IN 1"</small>		UNITS <small>IN (DIM) IN (DIM)</small>		TITLED	
MATERIAL:		ALL DIMENSIONS <small>IMPLY AFTER PLATING</small>		SPEC. CONTROL DRAWING VARIABLE TRANSFORMER MODEL: 3PN1020B-MOD	
The information and design disclosed herein are copyrighted by STACO ENERGY PRODUCTS CO. and are the property of STACO ENERGY PRODUCTS CO. and are not to be used, copied, reproduced, or in any other form without the express written consent of STACO ENERGY PRODUCTS CO. The foregoing does not apply to vendor proprietary parts.		DATE: 10/11/96	FIRST USED ON: 3PN1020B	DO NOT SCALE DIMS.	CUSTOMER APPROVAL: _____
CHECKER: _____	DATE: 10/25/96	WEIGHT: 10.25 LBS	CODE IDENT. NO.: _____	DWG. NO.:	DATE:
ENGINEER: _____	DATE: _____	SCALE: 1=1	SHEET 1 OF 1	D	031-2344x

