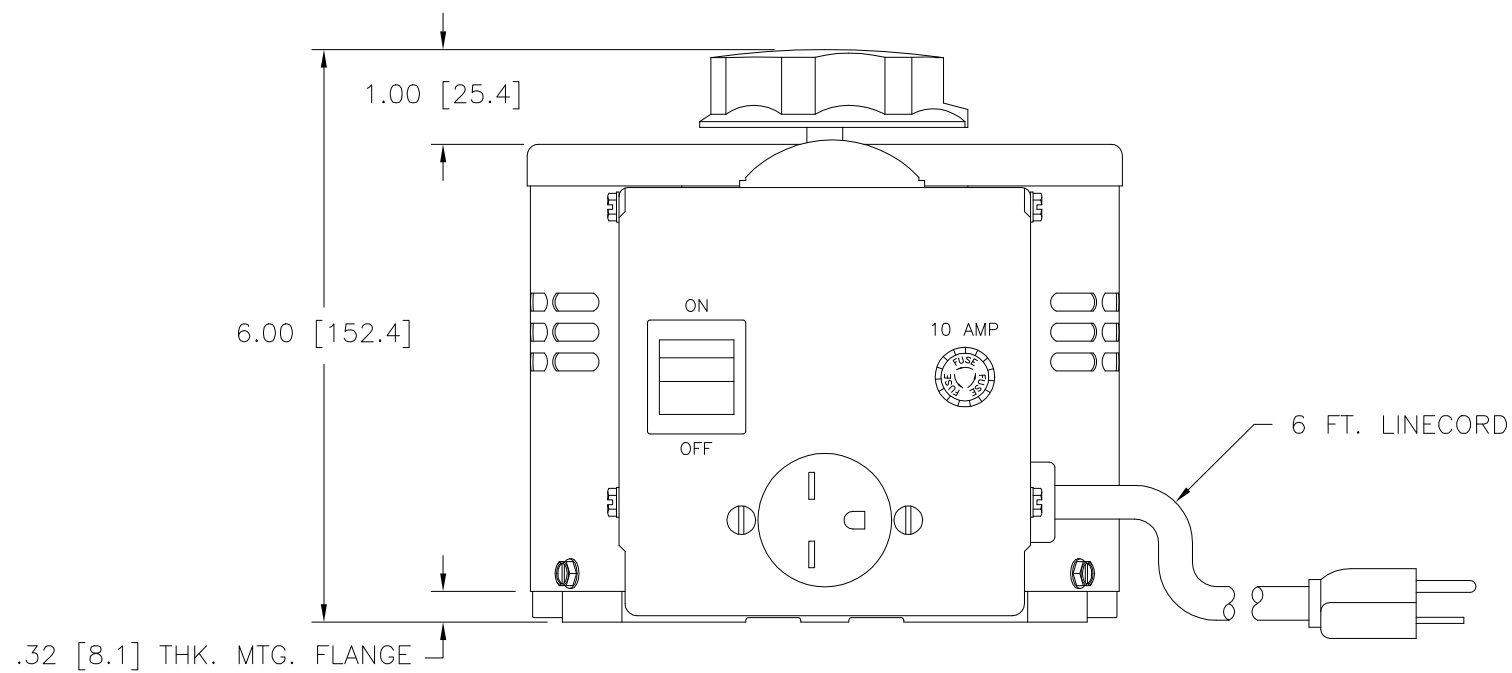
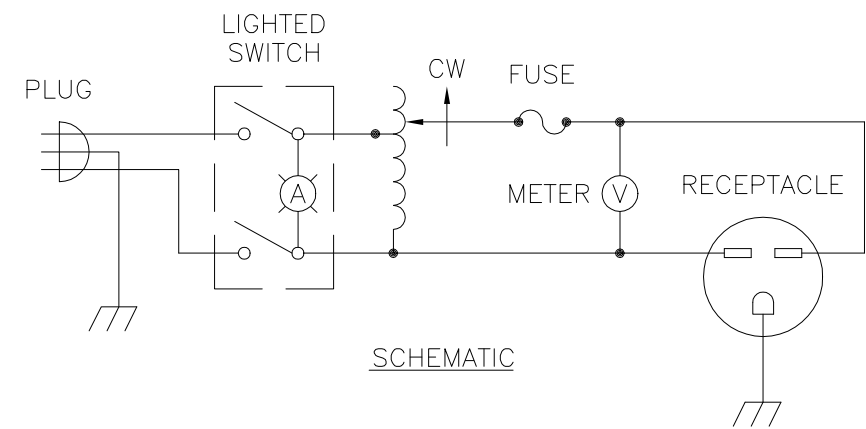
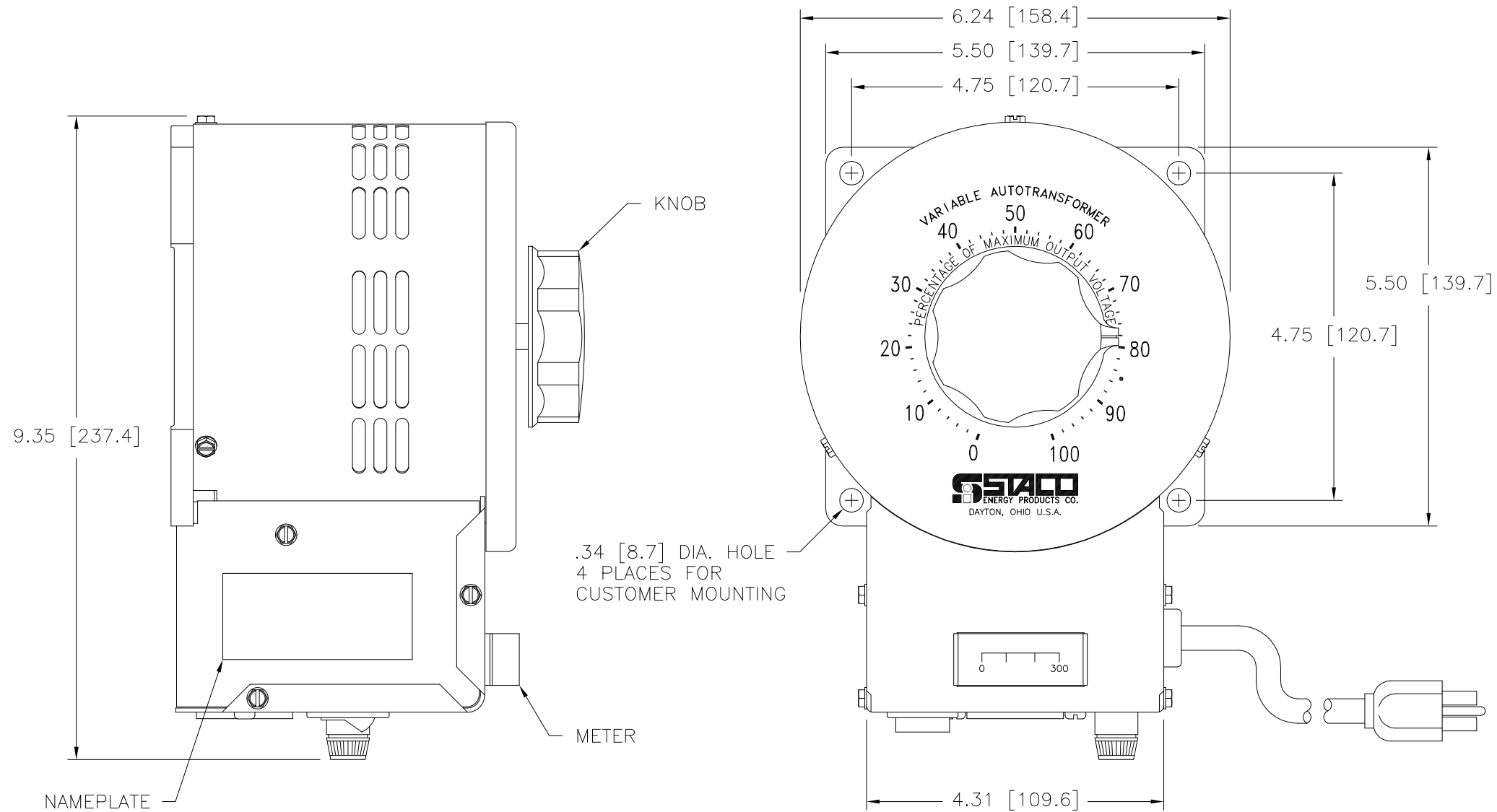


DWG. NO.	031-3946		
REVISIONS			
SYM.	E.C.N.	DATE	APVD.
A	24185	2/28/00	
ROTATED RECEPTACLE			

Go to VARIAC.com
to purchase and for
technical support.
Made in the USA



SPECIFICATIONS					
WIRING	INPUT		OUTPUT		
	VOLTS	HERTZ	VOLTS	CONSTANT CURRENT LOAD	
SINGLE PHASE	240	50/60	0-280	MAX. AMPS	MAX. KVA
				9.5	2.66

UNLESS OTHERWISE SPECIFIED, TOLERANCE IS #		UNITS		TITLE: SPEC. CONTROL DRAWING		STACO ENERGY PRODUCTS CO.	
DECIMALS	Holes	ANGLES	DRAFT	IN	MM	A COMPONENTS CORPORATION OF AMERICA COMPANY	
.XX	.0005	.01	1°	1-1/2"		DAYTON, OHIO U.S.A.	
MATERIAL:		ALL DIMENSIONS APPLY AFTER PLATING		DRAWN BY: S.A. SMITH		DATE: 5/16/96	
The information and design disclosed herein was originated by and is the property of STACO ENERGY PRODUCTS CO., which reserves all patent, proprietary, design, manufacturing, reproduction, use and sale rights thereto, and to any article disclosed therein except to the extent rights are expressly granted to others. The foregoing does not apply to vendor proprietary parts.		FIRST USED ON: 3PN1520BV		DO NOT SCALE DWG.		CUSTOMER APPROVAL: DATE:	
CHECKER:	DATE:	WEIGHT APPROX.: 22 LBS	CODE IDENT. NO.: 83008	DWG. NO.: 031-3946		D	
ENGINEER:	DATE:	SCALE: 1=1	SHEET 1 OF 1	D		031-3946	