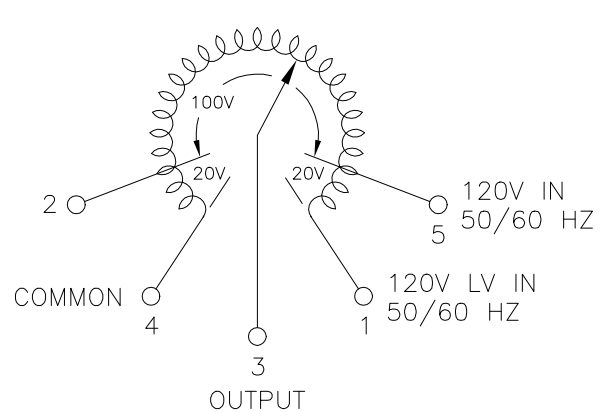
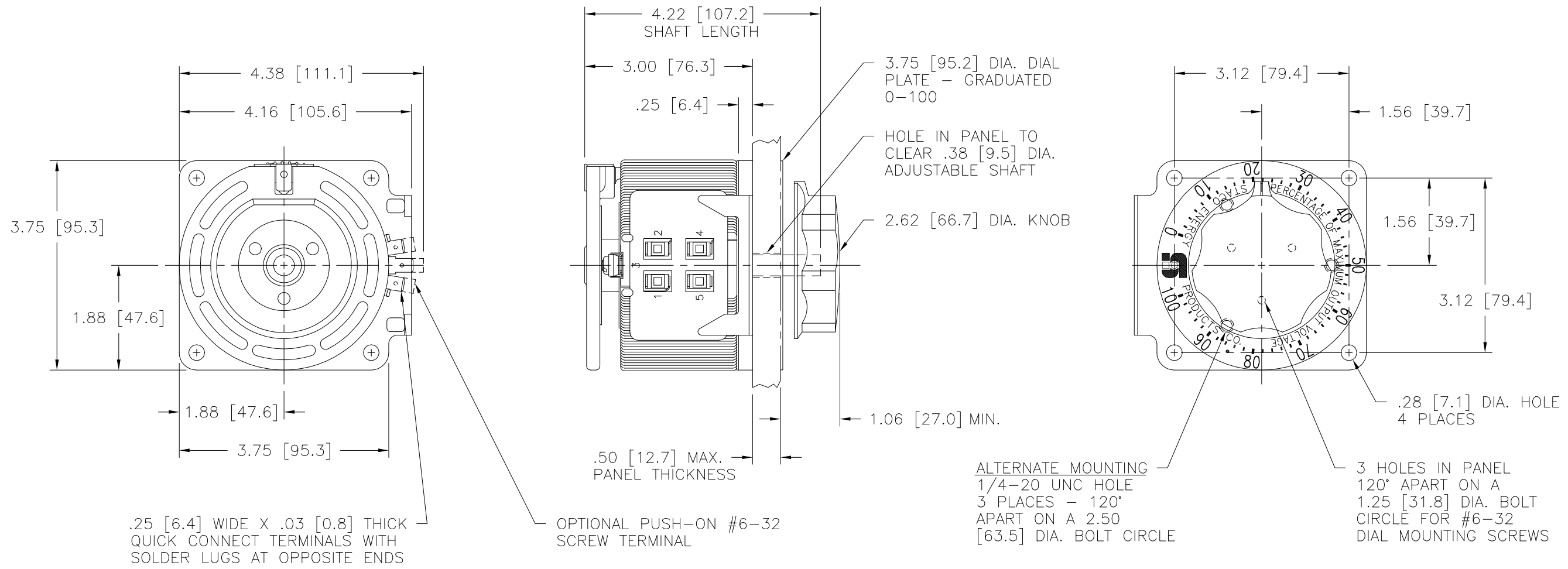


Go to VARIAC.com
to purchase and for
technical support.
Made in the USA



SCHEMATIC
VIEWED FROM BASE END
FOR OPPOSITE ROTATION INTERCHANGE EXTERNAL CONNECTIONS FROM 5 TO 2 AND 4 TO 1
FUSE RECOMMENDED BUT NOT SUPPLIED

SPECIFICATIONS												
WIRING	INPUT		OUTPUT				SHAFT ROTATION TO INCREASE VOLTAGE	TERMINAL CONNECTIONS				
	VOLTS	HERTZ	VOLTS	CONSTANT CURRENT LOAD		CONSTANT IMPEDANCE LOAD		FOR INCREASING VOLTAGE AS VIEWED FROM BASE END				
				MAX. AMPS	MAX. KVA	MAX. AMPS		MAX. KVA	INPUT	JUMPER	OUTPUT	
SINGLE PHASE	120	50/60	0-120	5.0	0.60	7.0	0.84	CW	1-4	---	4-3	
			0-140	5.0	0.70	---	---	CCW	1-4	---	1-3	
								CW	4-5	---	4-3	
								CCW	1-2	---	1-3	

UNLESS OTHERWISE SPECIFIED, TOLERANCE IS # DECIMALS Holes .03 ANGLES 1° DRAFT 1-1/2° UNITS IN [mm]

MATERIAL: ALL DIMENSIONS APPLY AFTER PLATING

THE INFORMATION AND DESIGN DISCLOSED HEREIN WAS ORIGINATED BY AND IS THE PROPERTY OF STACO ENERGY PRODUCTS CO., WHICH RESERVES ALL PATENT, PROPRIETARY, DESIGN, MANUFACTURING, REPRODUCTION, USE AND SALE RIGHTS THEREIN, AND TO ANY ARTICLE DISCLOSED THEREIN EXCEPT TO THE EXTENT RIGHTS ARE EXPRESSLY GRANTED TO OTHERS. THE FOREGOING DOES NOT APPLY TO VENDOR PROPRIETARY PARTS.

DATE: 3/11/99
WEIGHT APPROX. 4.75 LBS
SCALE 1=1

STACO ENERGY PRODUCTS CO. A COMPONENTS CORPORATION OF AMERICA COMPANY DAYTON, OHIO U.S.A.

DWG. NO. 031-0460
SHEET 1 OF 1