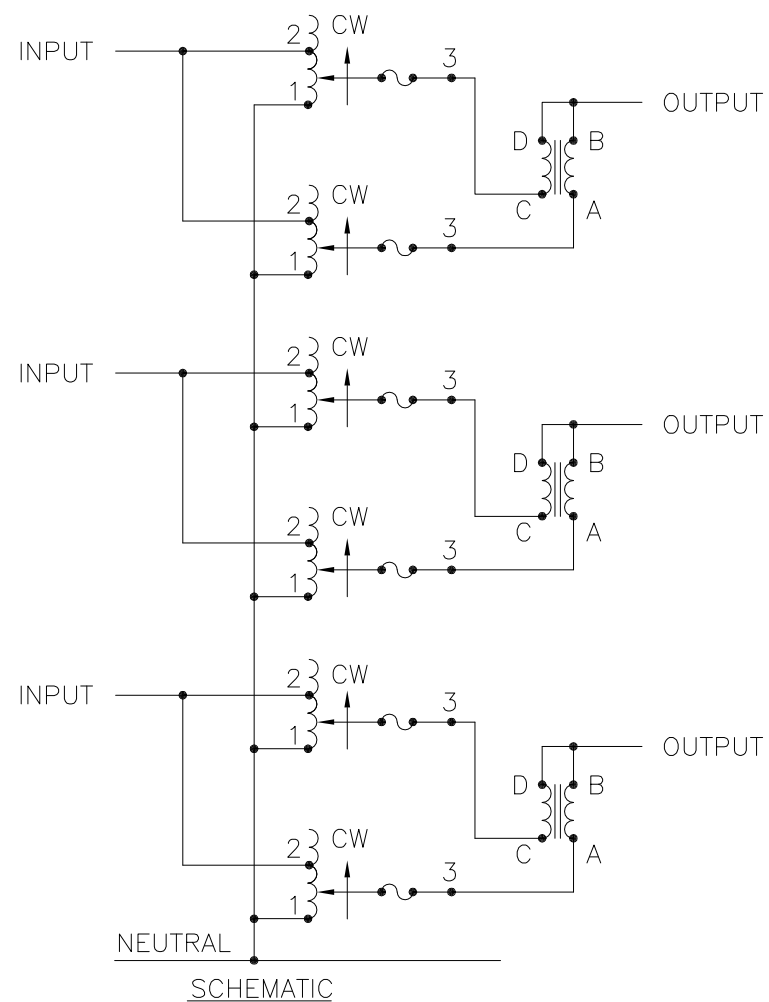


Go to VARIAC.com to purchase and for technical support. Made in the USA



| WIRING | SPECIFICATIONS | | | | | SHAFT ROTATION FOR INCREASE VOLTAGE | TERMINAL CONNECTIONS | | |
|-----------------|----------------|-------|--------|-----------|----------|-------------------------------------|---|--------|--------|
| | INPUT | | OUTPUT | | | | FOR INCREASING VOLTAGE AS VIEWED FROM ROTOR END | | |
| | VOLTS | HERTZ | VOLTS | MAX. AMPS | MAX. KVA | | INPUT | JUMPER | OUTPUT |
| THREE PHASE WYE | 240 | 60 | 0-280 | 100 | 48.5 | CW | 2-2-2 | — | B-B-B |

| | | | | | | | | | | | | |
|---|-------|--------|--------|------------------------------------|--|------------------------------|--|---|---------------|-----------------------|-------------------|------|
| UNLESS OTHERWISE SPECIFIED, TOLERANCE IS # | | | | UNITS | | TITLE: SPEC. CONTROL DRAWING | | STACO ENERGY PRODUCTS CO. A COMPONENTS CORPORATION OF AMERICA COMPANY DAYTON, OHIO U.S.A. | | | | |
| DECIMALS | HOLES | ANGLES | DRAFT | IN [mm] | | TYPE: 5011-6Y | | | | | | |
| .XX | +.014 | 1° | 1-1/2° | ALL DIMENSIONS APPLY AFTER PLATING | | DRAWN BY: TIM RAU | | DATE: 9/9/97 | FIRST USED ON | DO NOT SCALE DWG. | CUSTOMER APPROVAL | DATE |
| MATERIAL: | | | | WEIGHT APPROX. 479 LBS. | | CHECKER | | DATE | SCALE .25=1 | CODE IDENT. NO. 83008 | DWG. NO. 031-6774 | |
| The information and design disclosed herein was originated by and is the property of STACO ENERGY PRODUCTS CO., which reserves all patent, proprietary, design, manufacturing, reproduction, use and sale rights thereto, and to any article disclosed therein except to the extent rights are expressly granted to others. The foregoing does not apply to vendor proprietary parts. | | | | SCALE | | ENGINEER | | DATE | SHEET 1 OF 1 | | | |