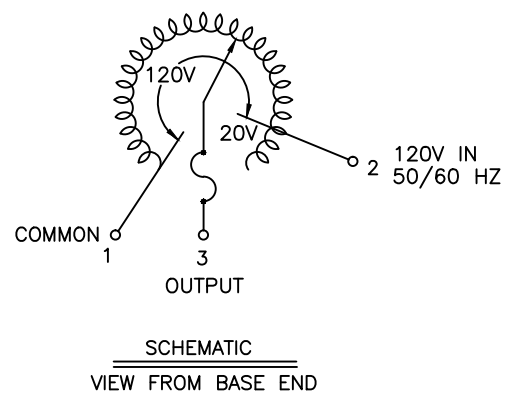
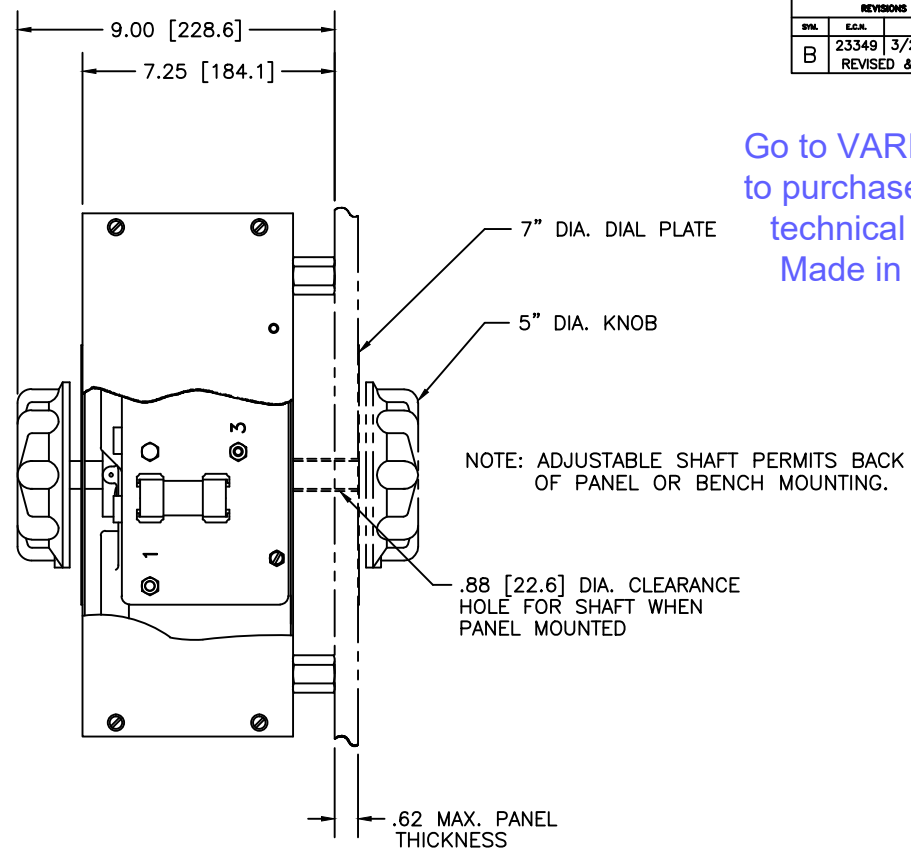
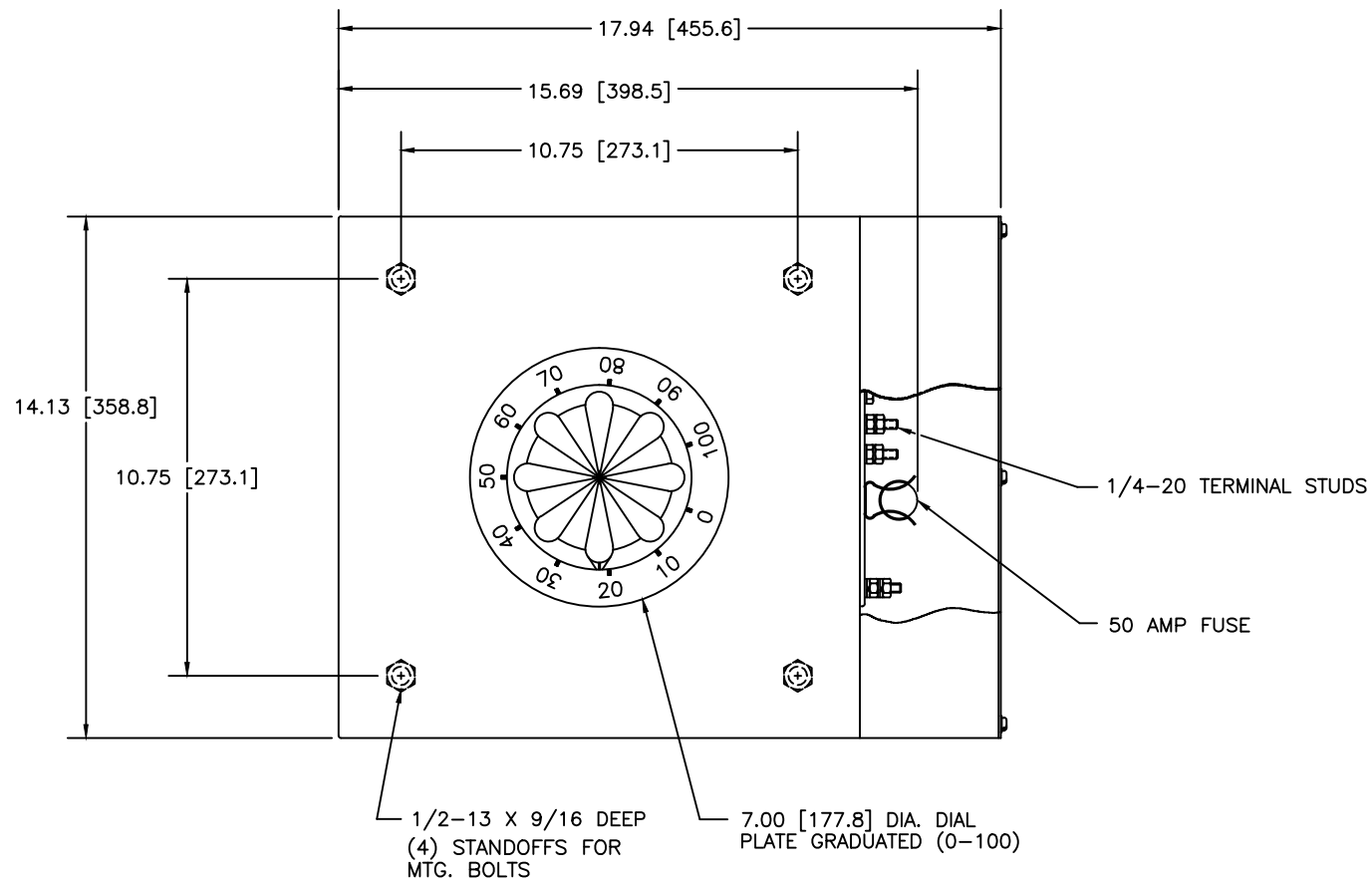


Dwg. No.		031-6006	
REVISIONS			
SYN.	E.C.N.	DATE	APVD.
B	23349	3/24/97	
REVISED & UPDATED			

Go to VARIAC.com
to purchase and for
technical support.
Made in the USA



SPECIFICATIONS								
WIRING	INPUT		OUTPUT			SHAFT ROTATION FOR INCREASE VOLTAGE	TERMINAL CONNECTIONS	
	VOLTS	HERTZ	VOLTS	MAX. AMPS	MAX. KVA		FOR INCREASING VOLTAGE AS VIEWED FROM ROTOR END	
SINGLE PHASE	120	50/60	0-140	50	7.0	CW	INPUT	OUTPUT
							1-2	1-3
<small>UNLESS OTHERWISE SPECIFIED, TOLERANCE IS ±</small> <small>DECIMALS</small> HOLES ANGLE DRAFT LIMITS <small>±.005</small> <small>±.010</small> <small>15°</small> <small>1-1/2°</small> <small>IN (mm)</small> <small>ALL DIMENSIONS APPLY AFTER FINISHING</small>						<small>TITLE:</small> SPEC. CONTROL DRAWING <small>TYPE:</small> 5011CT <small>DATE:</small> 3/24/97 <small>WEIGHT APPROX.</small> 57 LBS. <small>SCALE:</small> .5=1 <small>SHEET 1 OF 1</small>		<small>CUSTOMER APPROVAL</small> <small>DATE</small>
<small>The information and design disclosed herein was originated by and is the property of STACO ENERGY PRODUCTS CO., which reserves all patent, proprietary, design, manufacturing, reproduction, use and sale rights therein, and to any articles disclosed therein, except to the extent rights are expressly granted to others. The foregoing does not apply to vendor proprietary parts.</small>						<small>DRAWN BY:</small> TIM RAU <small>CHECKER:</small> <small>ENGINEER:</small>		<small>DATE:</small> 3/24/97 <small>DATE:</small> <small>DATE:</small>
						<small>DO NOT SCALE DWG.</small> <small>CODE IDENT. NO.</small> 83008 <small>DWG. NO.</small> 031-6006	<small>CUSTOMER APPROVAL</small> <small>DATE</small> <small>D</small> 031-6006	