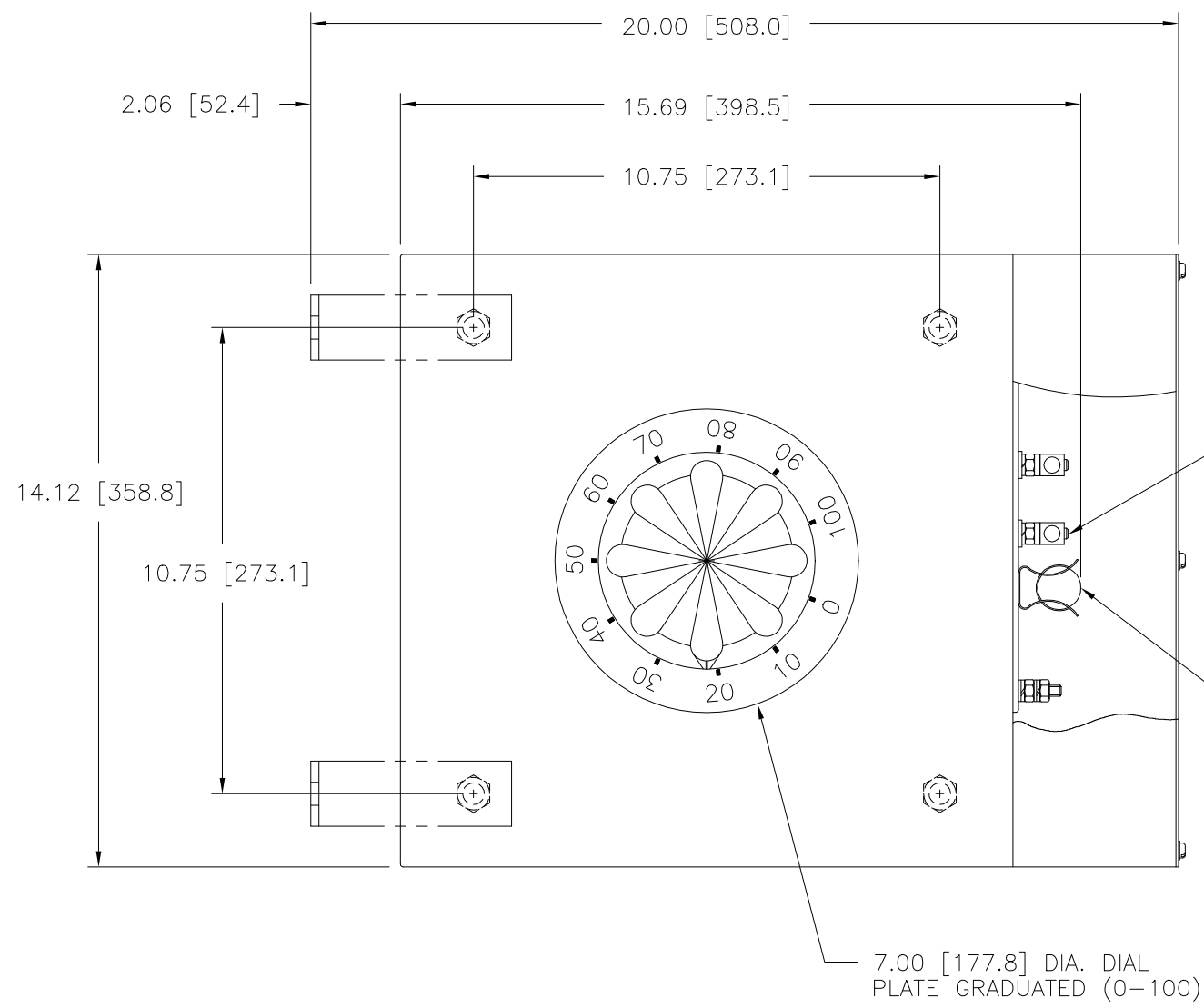
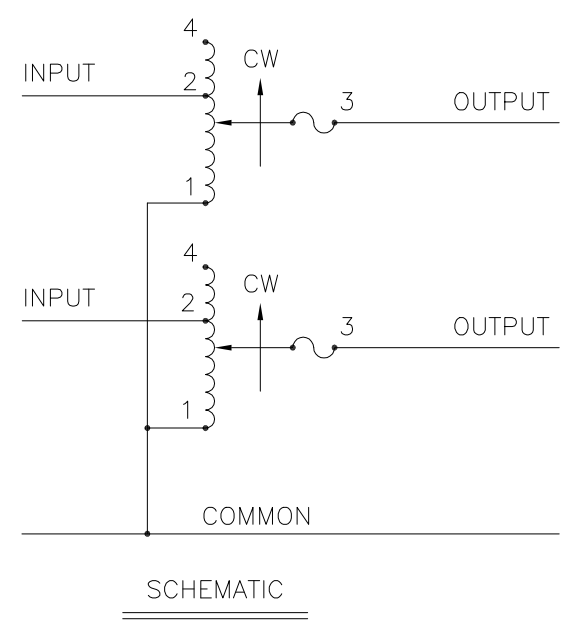
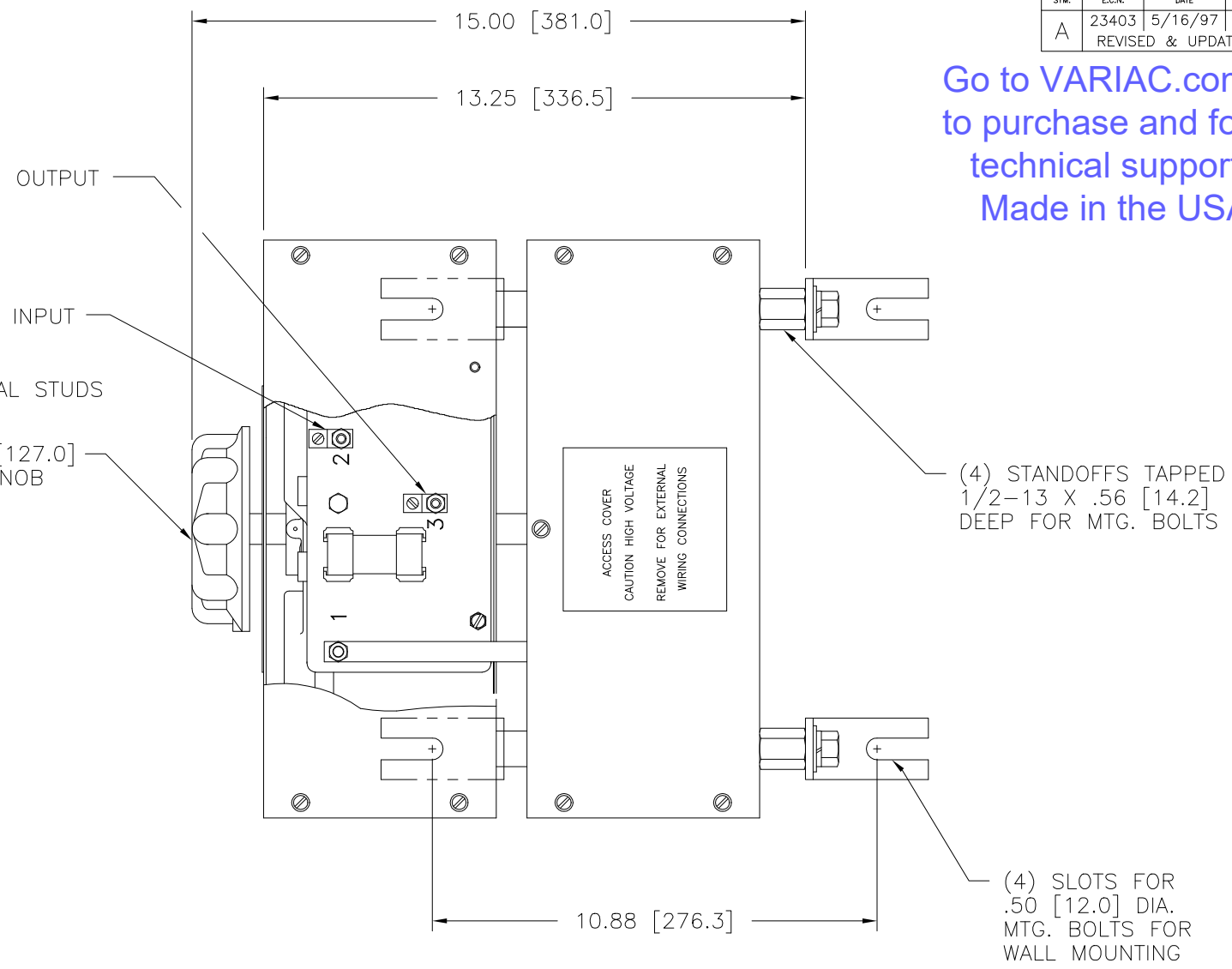


Go to VARIAC.com
to purchase and for
technical support.
Made in the USA



1/4-20 TERMINAL STUDS
5.00 [127.0] DIA. KNOB
60 AMP FUSE



| SPECIFICATIONS | | | | | | | | |
|---------------------|-------|-------|--------|-----------|----------|------------------------------------|--|--------|
| WIRING | INPUT | | OUTPUT | | | SHAFT ROTATION TO INCREASE VOLTAGE | TERMINAL CONNECTIONS FOR INCREASING VOLTAGE AS VIEWED FROM ROTOR END | |
| | VOLTS | HERTZ | VOLTS | MAX. AMPS | MAX. KVA | | INPUT | OUTPUT |
| SINGLE PHASE SERIES | 240 | 50/60 | 0-240 | 60 | 14.4 | CW | 4-4 | 3-3 |
| | | | 0-280 | 60 | 16.8 | CW | 2-2 | 3-3 |

| | | | | | | | | | |
|---|-------|--------|--------|------------------------------------|----|--|--|---|--|
| UNLESS OTHERWISE SPECIFIED, TOLERANCE IS # | | | | UNITS | | TITLE: SPEC. CONTROL DWG. VARIABLE TRANSFORMER TYPE: 6011CT-2S | | STACO ENERGY PRODUCTS CO. A COMPONENTS CORPORATION OF AMERICA COMPANY DAYTON, OHIO U.S.A. | |
| DECIMALS | Holes | ANGLES | DRAFT | IN | MM | | | | |
| .XX, .XXX, .005 | .002 | 1° | 1-1/2° | | | | | | |
| MATERIAL: | | | | ALL DIMENSIONS APPLY AFTER PLATING | | DRAWN BY: TIM RAU | | DATE: 5/16/97 | |
| The information and design disclosed herein was originated by and is the property of STACO ENERGY PRODUCTS CO., which reserves all patent, proprietary, design, manufacturing, reproduction, use and sale rights thereto, and to any article disclosed therein except to the extent rights are expressly granted to others. The foregoing does not apply to vendor proprietary parts. | | | | FIRST USED ON | | DO NOT SCALE DWG. | | CUSTOMER APPROVAL | |
| | | | | DATE | | WEIGHT APPROX. | | CODE IDENT. NO. 83008 | |
| | | | | DATE | | SCALE .5=1 | | DWG. NO. 032-6031 | |
| | | | | DATE | | SHEET 1 OF 1 | | D | |