

FIGURE 2  
 VIEW FROM BASE END  
 CCW ROTATION

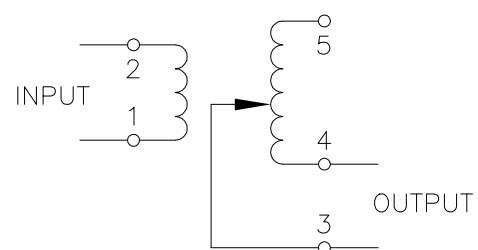


FIGURE 3  
 VIEW FROM BASE END  
 CCW ROTATION

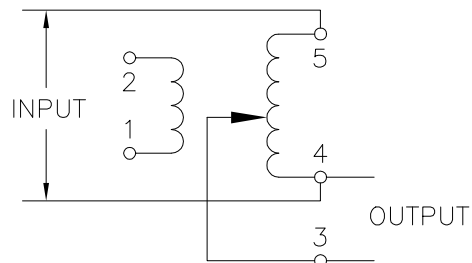


FIGURE 4  
 VIEW FROM BASE END  
 CCW ROTATION  
 RATED 2 AMP @ 260V  
 INCREASING TO 4.5 AMP @ 120V

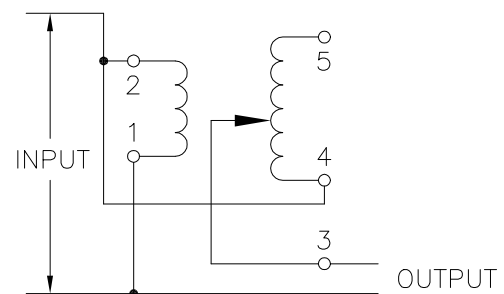
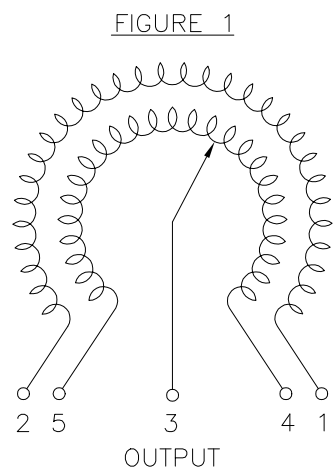
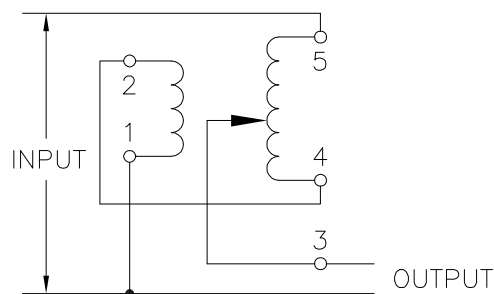


FIGURE 5  
 VIEW FROM BASE END  
 CCW ROTATION



SPECIFICATIONS										
SCHEMATIC	WIRING	INPUT		OUTPUT		SHAFT ROTATION TO INCREASE VOLTAGE	TERMINAL CONNECTIONS			
		VOLTS	HERTZ	VOLTS	CONSTANT CURRENT LOAD		FOR INCREASING VOLTAGE AS VIEWED FROM BASE END			
					MAX. AMPS	MAX. KVA		INPUT	JUMPER	OUTPUT
FIGURE 2	ISOLATED	120	50/60	0-140	2	0.28	CW	1-2	---	5-3
FIGURE 3	NON-ISOLATED			0-120	5	0.60	CW	4-5	---	5-3
FIGURE 4	VOLTAGE DOUBLER	120-260		4.5	0.52	CCW	4-5	---	4-3	
FIGURE 5	SERIES	240		110-240	4.5	1.08	CW	1-2	1-5	2-3
							CCW	1-2	2-4	1-3
							CCW	1-5	1-5	2-3
							CCW	1-5	2-4	1-3

UNLESS OTHERWISE SPECIFIED, TOLERANCE IS # DECIMALS HOLES .002 ANGLES DRAFT 1° 1-1/2° UNITS IN [mm]  
 MATERIAL: ALL DIMENSIONS APPLY AFTER PLATING

TITLE: SPEC. CONTROL DRAWING VARIABLE TRANSFORMER MODEL: J201B

STACO ENERGY PRODUCTS CO. A COMPONENTS CORPORATION OF AMERICA COMPANY DAYTON, OHIO U.S.A.

DRAWN BY S.A. SMITH DATE 9/26/97 FIRST USED ON DO NOT SCALE DWG. CUSTOMER APPROVAL DATE  
 CHECKER DATE WEIGHT APPROX. 8.5 LBS CODE IDENT. NO. 83008 DWG. NO. 031-8843  
 ENGINEER DATE SCALE 1=1 SHEET 1 OF 1