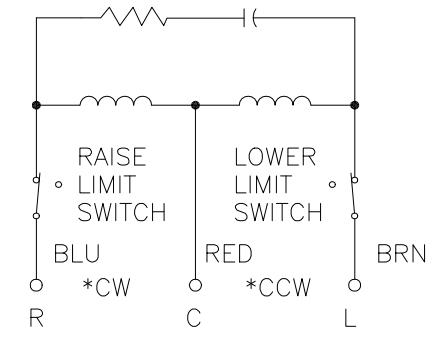
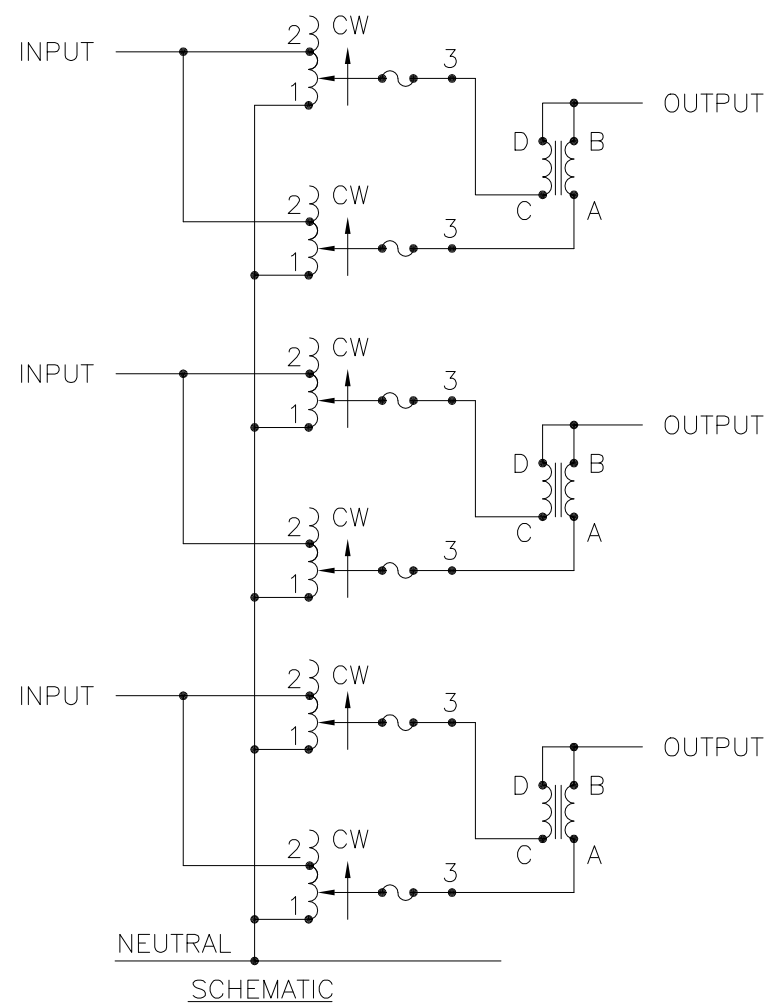
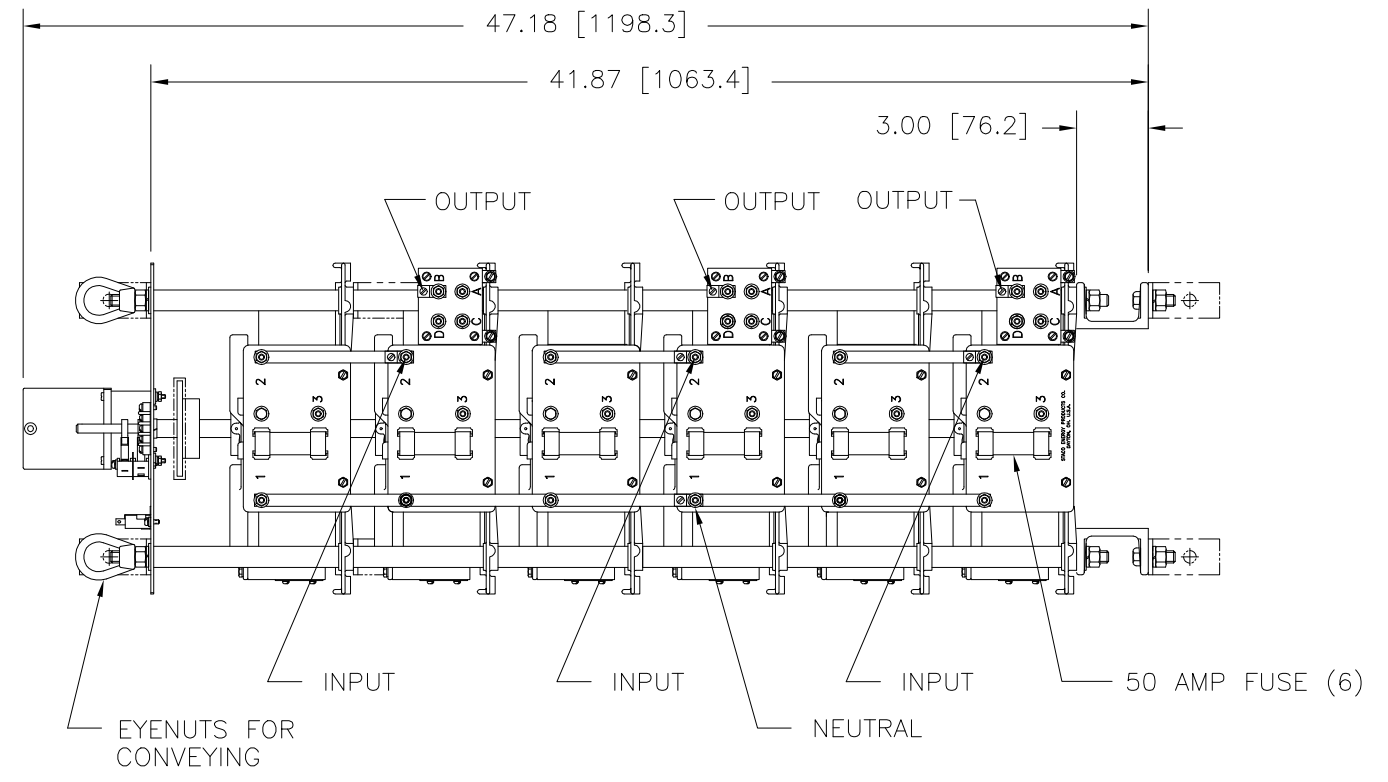
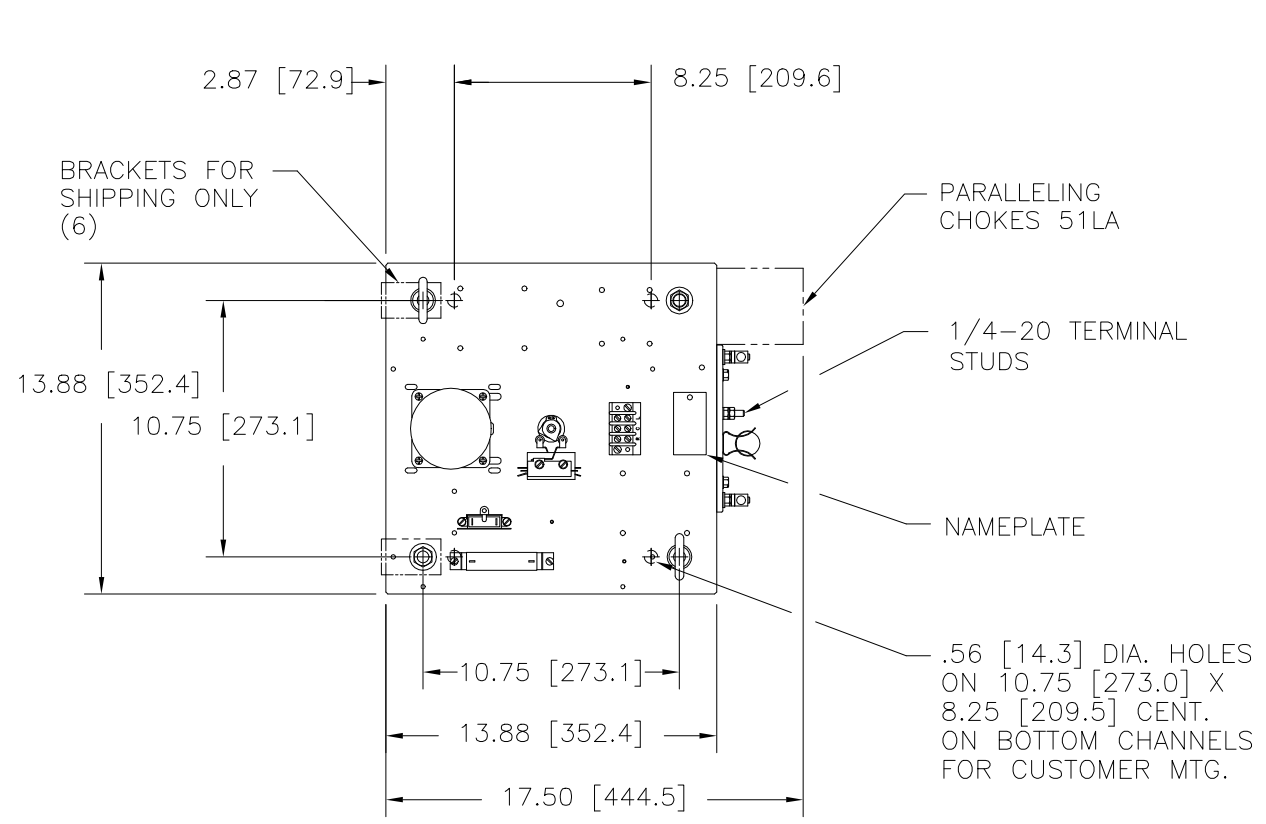


DWG. NO.	031-6954		
REVISIONS			
SYM.	E.C.N.	DATE	APVD.
A	24215	4/18/00	REVISOR
			REVISED & UPDATED
B	24309	8/31/00	REVISOR
			REVISED & UPDATED



MOTOR CIRCUIT

120V 50/60 HZ

\* ROTATION AS VIEWED FROM MOTOR END

MOTOR SPEED : SEE CHART

SPEED (SECONDS)	MODEL NUMBER
15	15M5011-6Y
30	30M5011-6Y
60	60M5011-6Y

WIRING	SPECIFICATIONS						TERMINAL CONNECTIONS		
	INPUT		OUTPUT			SHAFT ROTATION FOR INCREASE VOLTAGE	FOR INCREASING VOLTAGE AS VIEWED FROM ROTOR END		
	VOLTS	HERTZ	VOLTS	MAX. AMPS	MAX. KVA		INPUT	JUMPER	OUTPUT
THREE PHASE WYE	240	60	0-280	100	48.5	CW	2-2-2	—	B-B-B

UNLESS OTHERWISE SPECIFIED, TOLERANCE IS # DECIMALS HOLES .12 .002 ANGLES DRAFT 1° 1-1/2° UNITS IN [mm]

MATERIAL: ALL DIMENSIONS APPLY AFTER PLATING

TITLE: SPEC. CONTROL DWG. MOTORIZED VARIABLE XFMR 15 30 & 60M5011-6Y

STACO ENERGY PRODUCTS CO. DAYTON, OHIO U.S.A.

DRAWN BY: TIM RAU      DATE: 2/13/96      FIRST USED ON:      DO NOT SCALE DWG.      CUSTOMER APPROVAL:      DATE:

CHECKER:      DATE:      WEIGHT APPROX.      CODE IDENT. NO. 83008      DWG. NO. 031-6954

ENGINEER:      DATE:      SCALE .25=1      SHEET 1 OF 1      D