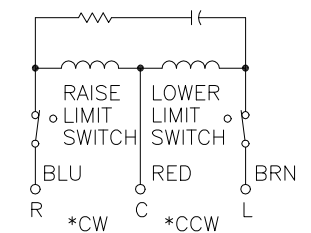
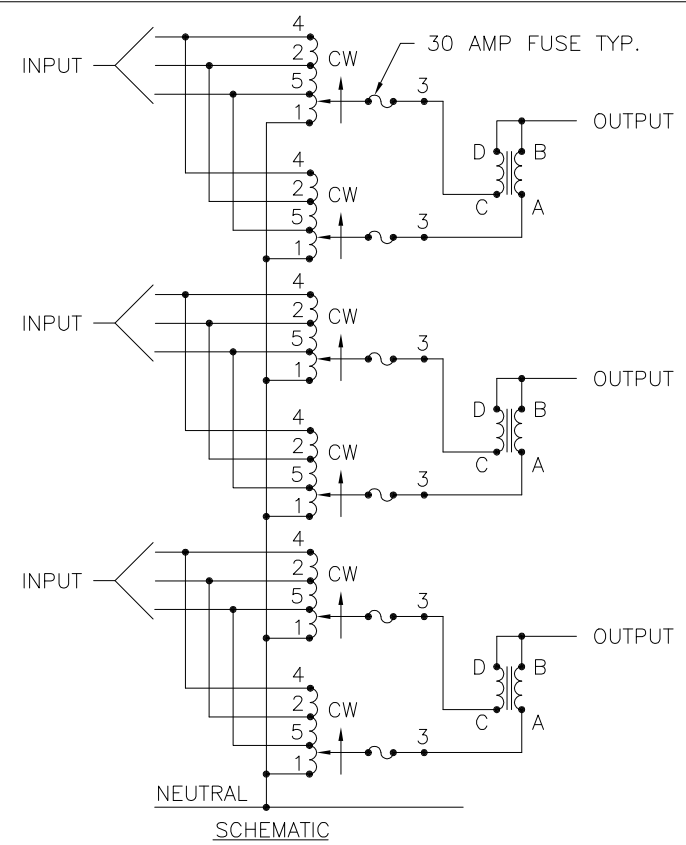
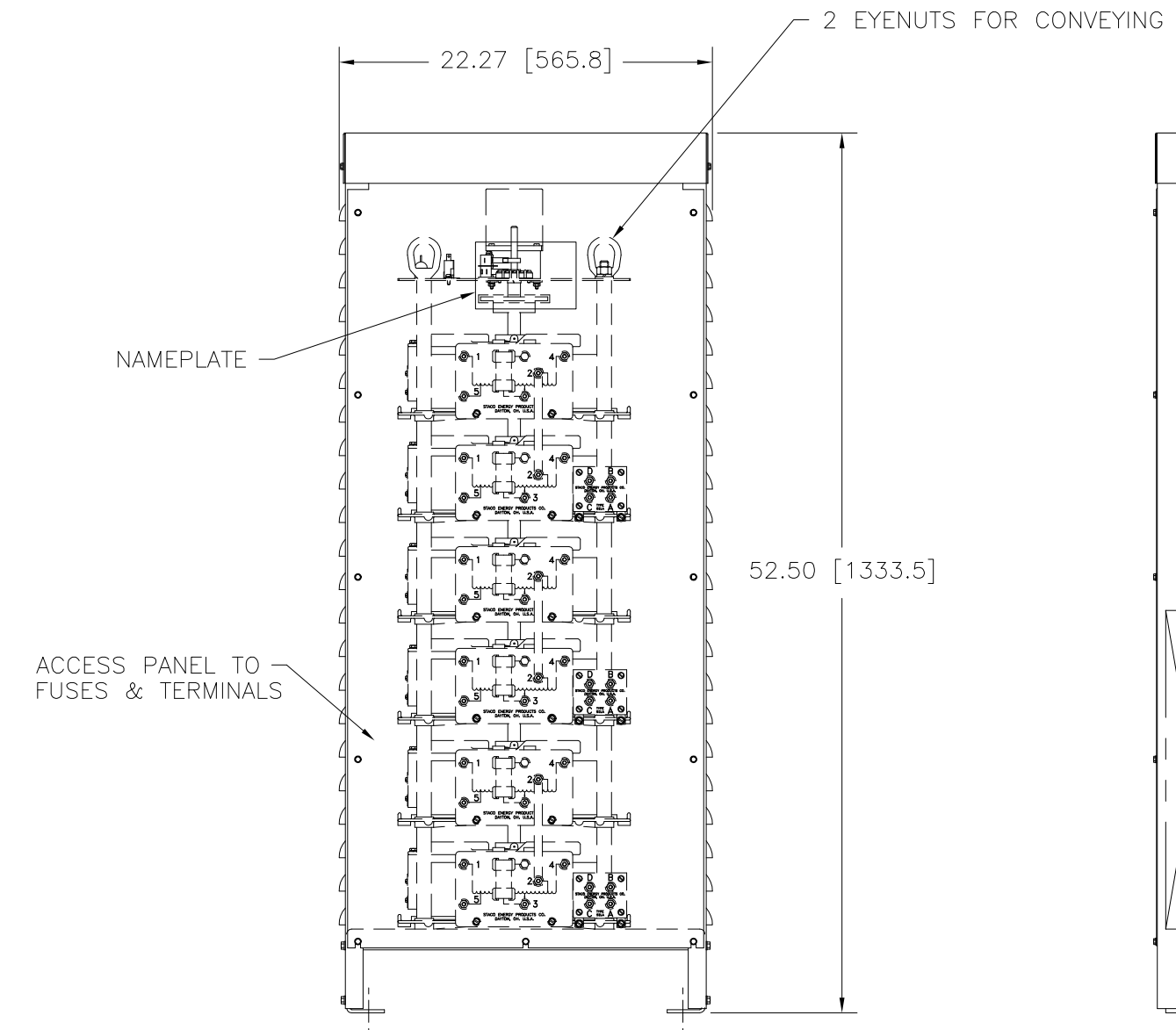
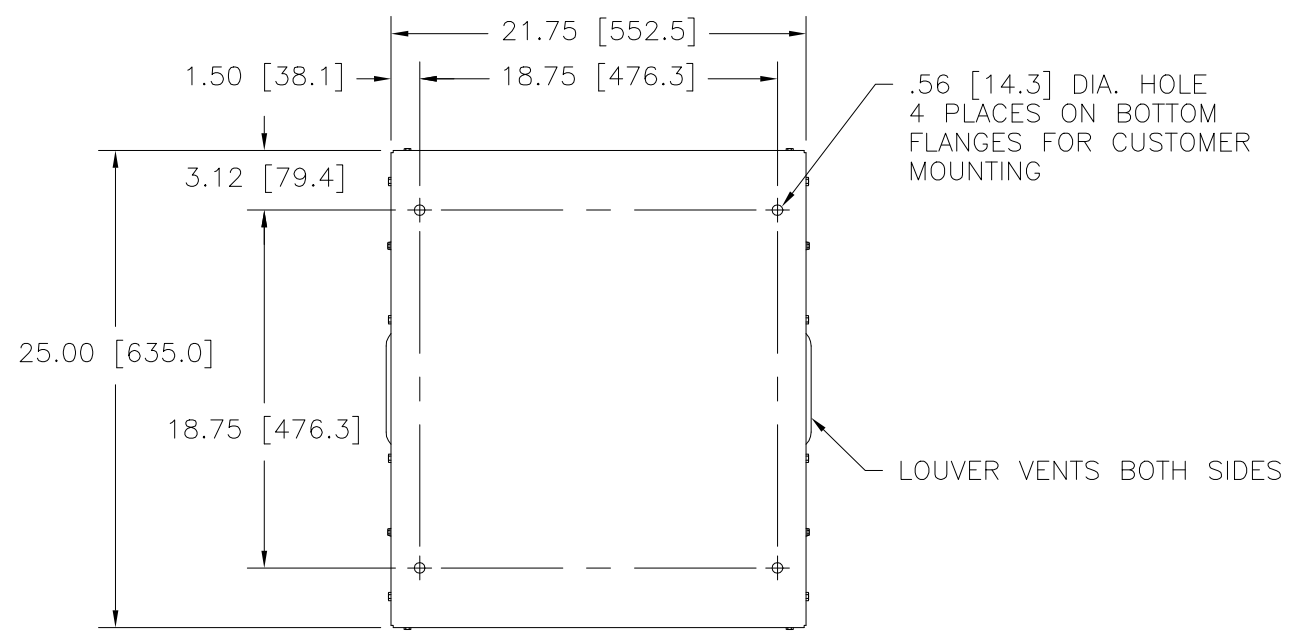
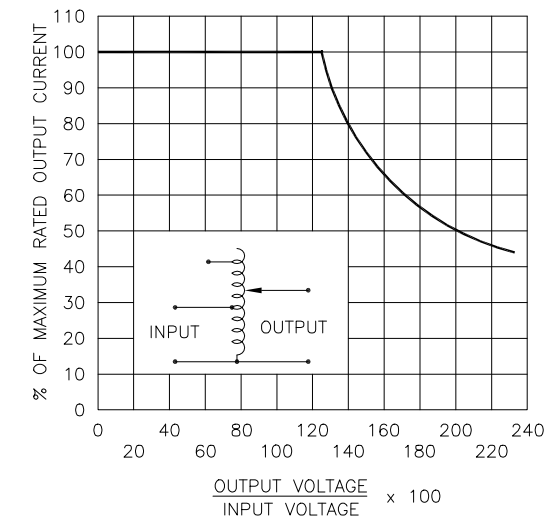


Go to [VARIAC.com](http://VARIAC.com)  
 to purchase and for  
 technical support.  
 Made in the USA



**MOTOR CIRCUIT**  
 120V, 50/60 HZ  
 \* ROTATION AS VIEWED FROM TOP END  
 MOTOR SPEEDS: 15, 30, 60 SEC.



**FIGURE A**  
 MAXIMUM OUTPUT CURRENT OF ANY DUAL INPUT VOLTAGE OR VOLTAGE DOUBLER UNIT OPERATED AT LOWER INPUT VOLTAGE.

\* MAXIMUM OUTPUT CURRENT IN OUTPUT VOLTAGE RANGE FROM 0 TO 25 PERCENT ABOVE LINE VOLTAGE. AT HIGHER OUTPUT VOLTAGES, OUTPUT CURRENT MUST BE REDUCED ACCORDING TO RATING CURVE (SEE FIGURE A).

++ MAXIMUM KVA AT MAXIMUM OUTPUT AND CORRESPONDING DE-RATED CURRENT. MAXIMUM KVA AT LOWER OUTPUT VOLTAGES MAY BE CALCULATED FROM RATING CURVE, (SEE FIGURE A).

V.D. = VOLTAGE DOUBLER.

SPEED (SECONDS)	MODEL NUMBER
15	15M5021E-6Y
30	30M5021E-6Y
60	60M5021E-6Y

WIRING	INPUT		OUTPUT			SHAFT ROTATION FOR VOLTAGE INCREASE	TERMINAL CONNECTIONS FOR INCREASING VOLTAGE AS VIEWED FROM TOP	
	VOLTS	HERTZ	VOLTS	CONSTANT CURRENT LOAD			INPUT	OUTPUT
				MAX. AMPS	MAX. KVA			
THREE PHASE WYE	480	50/60	0-480	56	46.6	CW	4-4-4	B-B-B
		60	0-560	56	54.3	CW	2-2-2	B-B-B
	240	60	0-560	56* 24 V.D.	23.5 ++	CW	5-5-5	B-B-B

UNLESS OTHERWISE SPECIFIED, TOLERANCE IS # DECIMALS .XX .XXX .12 .000 .03 1° 1-1/2° UNITS IN [mm]

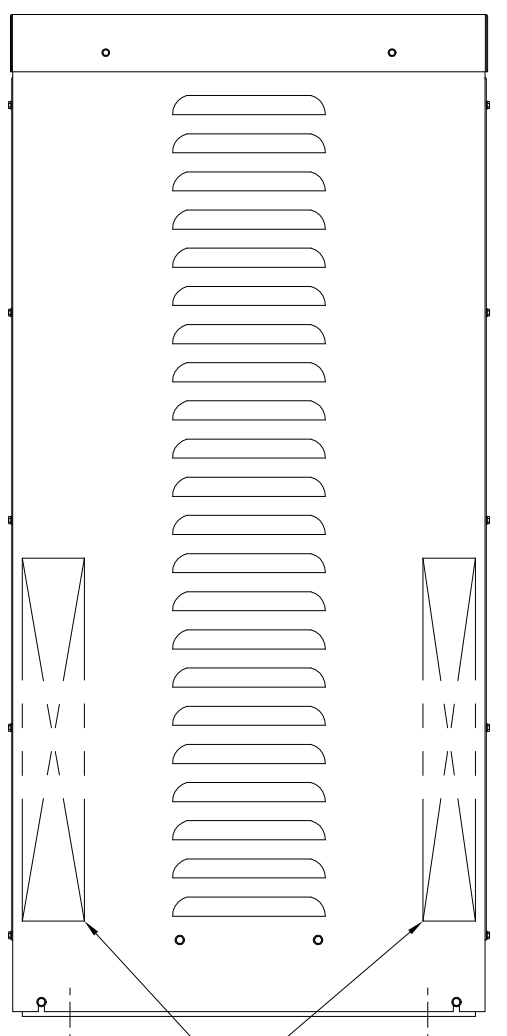
**STACO ENERGY PRODUCTS CO.**  
 DAYTON, OHIO U.S.A.

**SPECIFICATION CONTROL DRAWING**  
 MOTORIZED VARIABLE TRANSFORMER  
 15, 30, & 60M5021E-6Y

DRAWN BY S.A. SMITH DATE 11/15/94 FIRST USED ON M5021E-6Y DO NOT SCALE DWG. CUSTOMER APPROVAL DATE

CHECKER DATE WEIGHT APPROX. CODE IDENT. NO. 83008 DWG. NO. 031-8380

ENGINEER DATE SCALE .2=1 SHEET 1 OF 1



RECOMMENDED AREAS FOR CONDUIT ENTRY