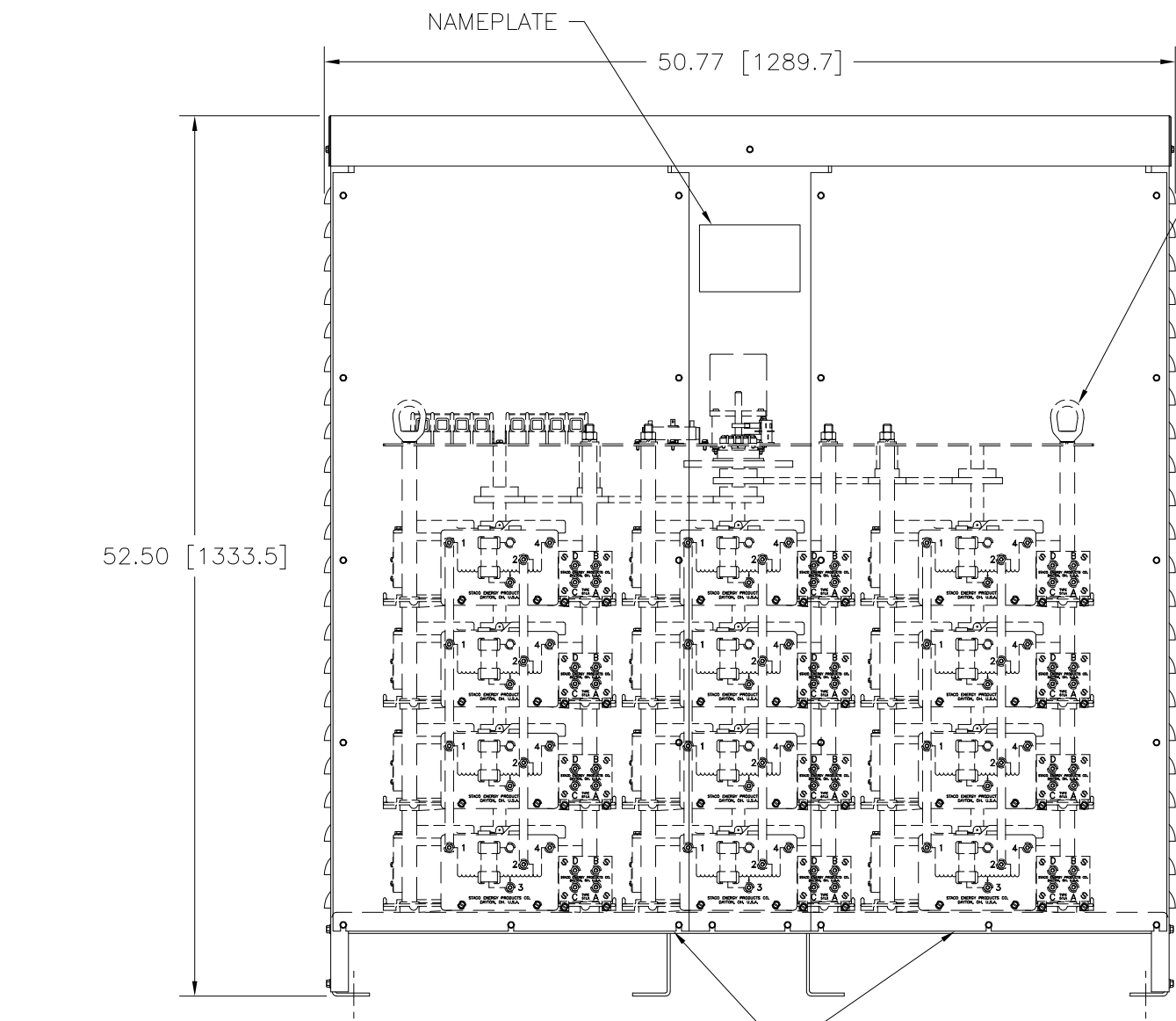
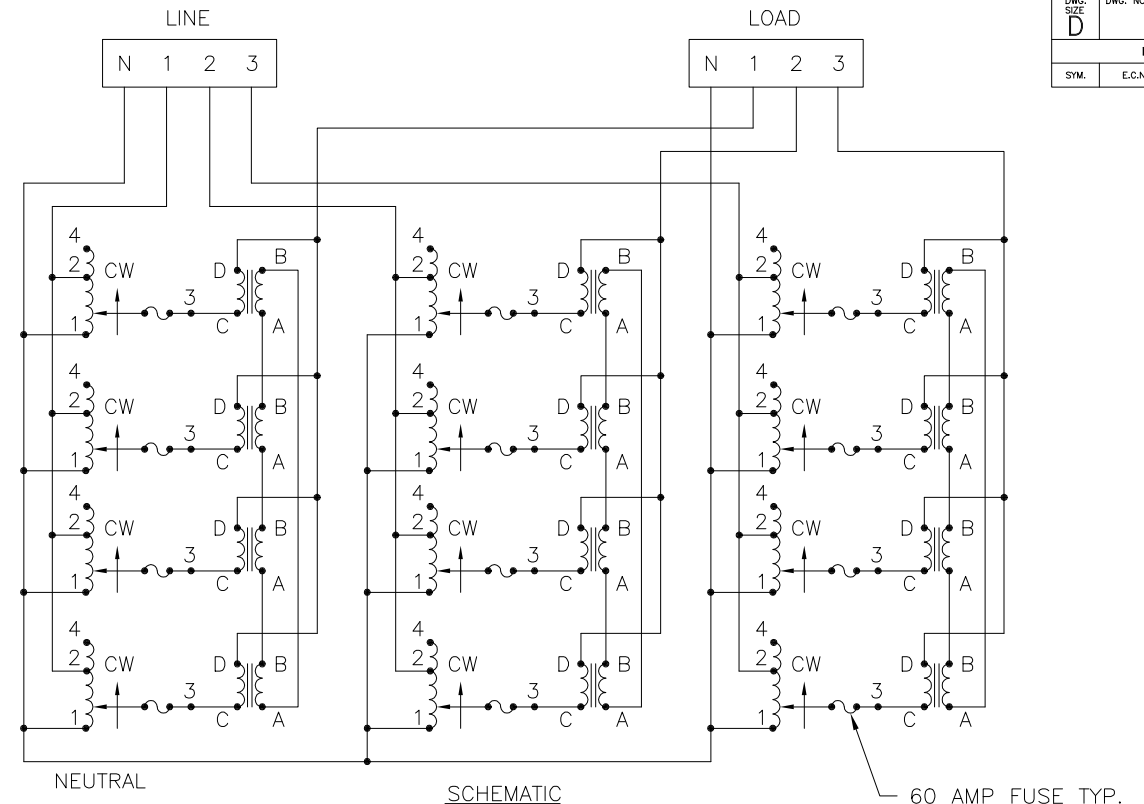


.56 [14.3] DIA. HOLE
 4 PLACES ON BOTTOM
 FLANGES FOR CUSTOMER
 MOUNTING

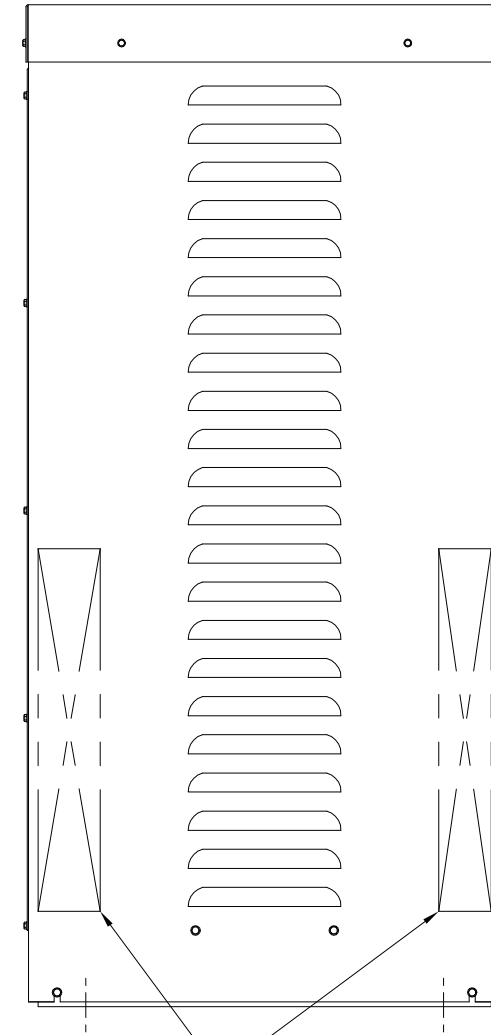
LOUVER VENTS
 BOTH SIDES



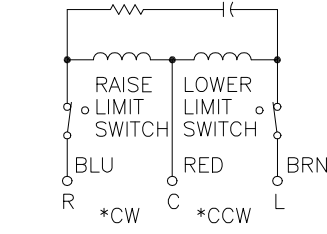
NAMEPLATE

EYENUTS FOR
 CONVEYING

ACCESS PANELS TO
 FUSES & TERMINALS



RECOMMENDED AREAS
 FOR CONDUIT ENTRY



MOTOR CIRCUIT
 120V, 50/60 HZ
 * ROTATION AS VIEWED
 FROM TOP END
 MOTOR SPEEDS: 30, 60 SEC.

SPEED (SECONDS)	MODEL NUMBER
30	30M6011E-12Y
60	60M6011E-12Y

WIRING	INPUT		OUTPUT			SHAFT ROTATION FOR VOLTAGE INCREASE	TERMINAL CONNECTIONS FOR INCREASING VOLTAGE AS VIEWED FROM TOP	
	VOLTS	HERTZ	VOLTS	CONSTANT CURRENT LOAD			INPUT	OUTPUT
				MAX. AMPS	MAX. KVA			
THREE PHASE WYE	240	60	0-240	240	99.6	CW	4-4-4	D-D-D
			0-280	240	116.3	CW	2-2-2	D-D-D

UNLESS OTHERWISE SPECIFIED, TOLERANCE IS # DECIMALS .XX .XXX .12 .000 .03 .1° .1-1/2° UNITS IN [mm]

MATERIAL: ALL DIMENSIONS APPLY AFTER PLATING

TITLE: SPECIFICATION CONTROL DRAWING
 MOTORIZED VARIABLE TRANSFORMER
 30 & 60M6011E-12Y

DRAWN BY: S.A. SMITH DATE: 11/18/94 FIRST USED ON: M6011E-12Y DO NOT SCALE DWG. CUSTOMER APPROVAL: DATE:

CHECKER: DATE: WEIGHT APPROX. CODE IDENT. NO. 83008 DWG. NO. 032-7120

ENGINEER: DATE: SCALE: .2=1 SHEET 1 OF 1 DWG. NO. 032-7120

STACO ENERGY PRODUCTS CO. DAYTON, OHIO U.S.A.