

DWG. NO.	032-7624		
REVISIONS			
SYM.	E.C.N.	DATE	APVD.
A	24431	12/21/00	
REVISED & UPDATED			

Go to [VARIAC.com](http://VARIAC.com)  
to purchase and for  
technical support.  
Made in the USA

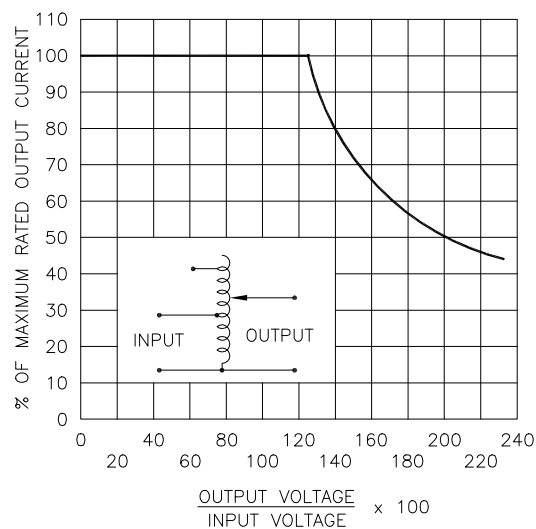
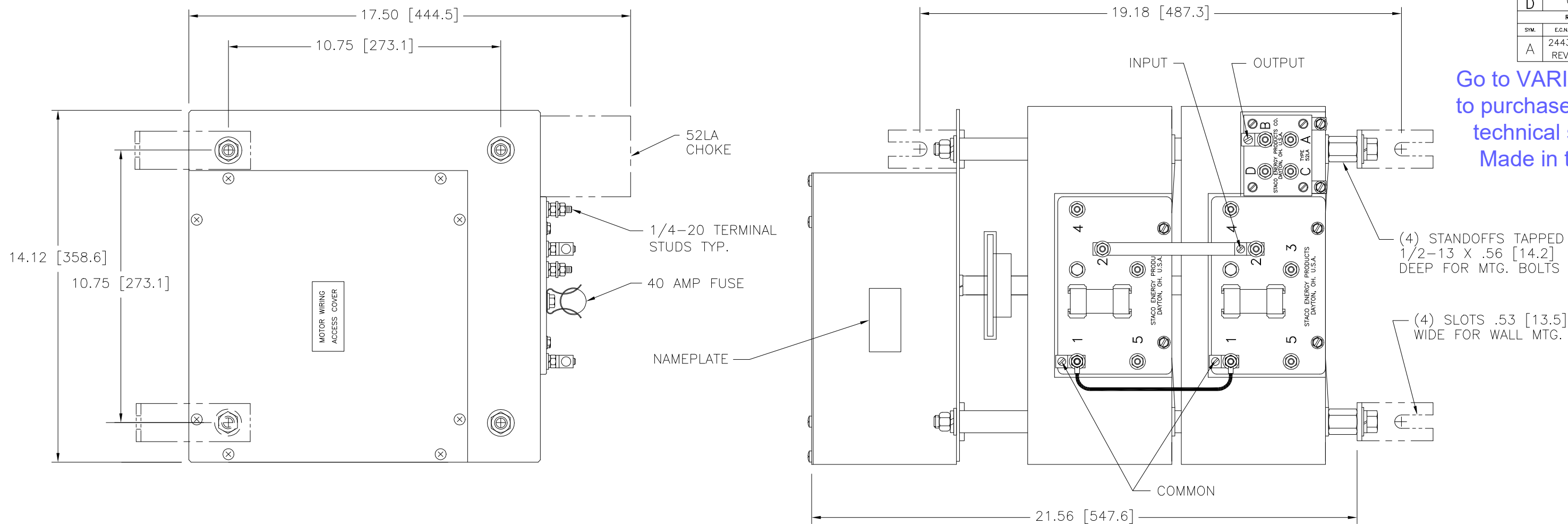
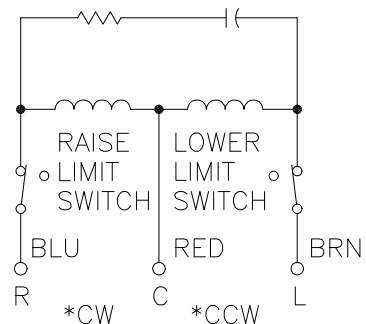


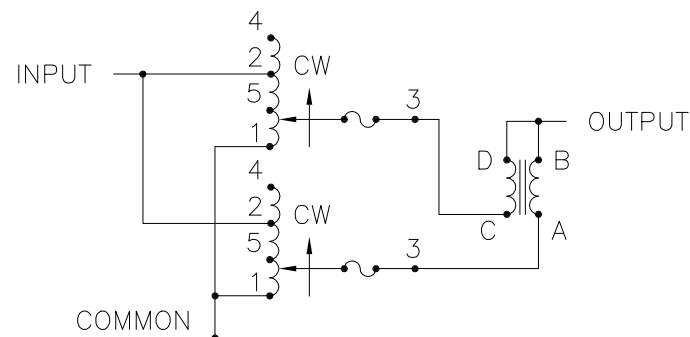
FIGURE A

MAXIMUM OUTPUT CURRENT OF ANY DUAL INPUT VOLTAGE OR VOLTAGE DOUBLER UNIT OPERATED AT LOWER INPUT VOLTAGE.



120V, 50/60 HZ.  
\* ROTATION AS VIEWED FROM MOTOR END SPEED: SEE CHART

MOTOR CIRCUIT



SCHEMATIC

# MAXIMUM OUTPUT CURRENT IN OUTPUT VOLTAGE RANGE FROM 0 TO 25% ABOVE LINE VOLTAGE. AT HIGHER OUTPUT VOLTAGES, OUTPUT CURRENT MUST BE REDUCED ACCORDING TO RATING CURVE, FIGURE A.

++ MAXIMUM KVA AT MAXIMUM OUTPUT AND CORRESPONDING DE-RATED CURRENT. MAXIMUM KVA AT LOWER OUTPUT VOLTAGES MAY BE CALCULATED FROM RATING CURVE, FIGURE A.

V.D. = VOLTAGE DOUBLER.

SPECIFICATIONS									
WIRING	INPUT		OUTPUT			SHAFT ROTATION FOR INCREASE VOLTAGE	TERMINAL CONNECTIONS		
	VOLTS	HERTZ	VOLTS	MAX. AMPS	MAX. KVA		FOR INCREASING VOLTAGE AS VIEWED FROM ROTOR END		
SINGLE PHASE PARALLEL	240	50/60	0-240	70	16.8	CW	INPUT	JUMPER	OUTPUT
			0-280	70	19.6		1-4	1-B	
	120	50/60	0-280	70*30 V.D.	8.4 †	CW	1-5	1-B	

SPEED (SEC.)	TYPE NO.
5	5M6020C-2P
15	15M6020C-2P
30	30M6020C-2P
60	60M6020C-2P

UNLESS OTHERWISE SPECIFIED, TOLERANCE IS # DECIMALS Holes .12 .002 ANGLES 1° DRAFT 1-1/2° UNITS IN [mm]

TITLE: SPEC. CONTROL DRAWING MOTORIZED VARIABLE XFMR. TYPE: M6020C-2P

MATERIAL: ALL DIMENSIONS APPLY AFTER PLATING

DRAWN BY: TIM RAU DATE: 4/15/97 FIRST USED ON: DO NOT SCALE DWG. CUSTOMER APPROVAL: DATE:

CHECKER: DATE: WEIGHT APPROX. CODE IDENT. NO. 83008 DWG. NO. 032-7624

ENGINEER: DATE: SCALE: .5=1 SHEET 1 OF 1 DWG. NO. 032-7624

The information and design disclosed herein was originated by and is the property of STACO ENERGY PRODUCTS CO., which reserves all patent, proprietary, design, manufacturing, reproduction, use and sale rights thereto, and to any article disclosed therein except to the extent rights are expressly granted to others. The foregoing does not apply to vendor proprietary parts.

**STACO**  
ENERGY PRODUCTS CO.  
A COMPONENTS CORPORATION OF AMERICA COMPANY  
DAYTON, OHIO U.S.A.