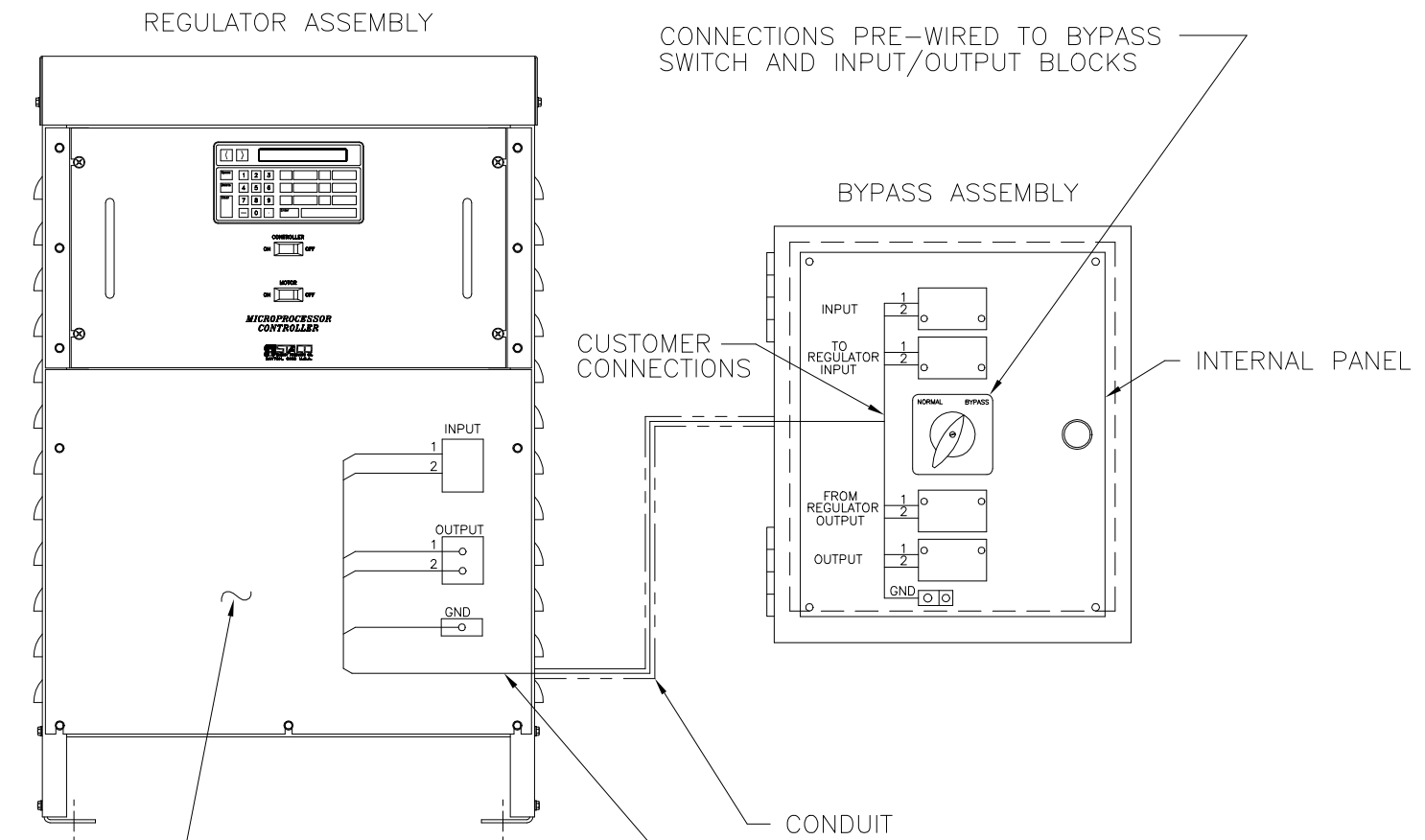
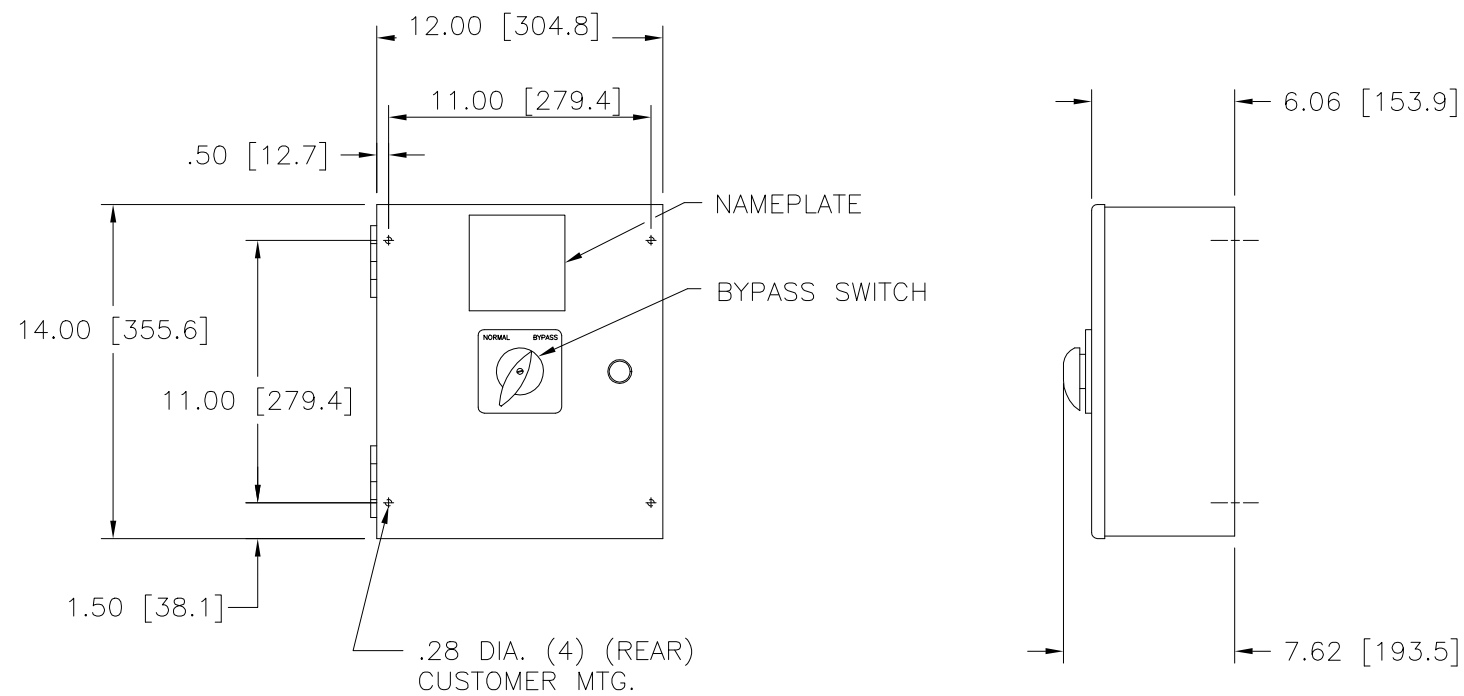


BYPASS SWITCH: WHEN THIS SWITCH IS PLACED IN THE "BYPASS" POSITION, THE INCOMING LINE IS CONNECTED DIRECTLY TO THE OUTGOING LINE AND THE REGULATOR IS REMOVED FROM THE CIRCUIT. IN THE "NORMAL" POSITION, THE REGULATOR WILL CORRECT FOR HIGH OR LOW SUPPLY LINE VOLTAGES WHILE MAINTAINING A CONSTANT PRESET OUTPUT VOLTAGE.

WARNING !
DO NOT OPERATE THE SWITCH UNDER LOAD OR THE SWITCH MAY BE DAMAGED.



WIRE RANGES FOR CUSTOMER WIRING

INPUT/OUTPUT TERMINALS: (1)(#2-#14 AWG) COMPRESSION PER POLE
 TO/FROM REGULATOR TERMINALS: (1)(#2-#14 AWG) COMPRESSION PER POLE
 GROUND TERMINAL: (1)(#2-#14 AWG) COMPRESSION

NO SCALE

BYPASS SWITCH RATINGS			
SINGLE PHASE WIRING	50/60 HERTZ	600 VOLTS	100 AMPS
UNLESS OTHERWISE SPECIFIED, TOLERANCE IS * DECIMALS .005 Holes .002 ANGLES 1° DRAFT 1-1/2°	TITLE: SPEC. CONTROL DRAWING MAINT. BYPASS SWITCH TYPE: MB-S100		 STACO ENERGY PRODUCTS CO. A COMPONENTS CORPORATION OF AMERICA COMPANY DAYTON, OHIO U.S.A.
MATERIAL: ALL DIMENSIONS APPLY AFTER PLATING	DRAWN BY: TIM RAU CHECKER: DATE: _____ ENGINEER: DATE: _____	DATE: 9/22/98 FIRST USED ON: MS-S100 WEIGHT APPROX.: _____ SCALE: .25=1	